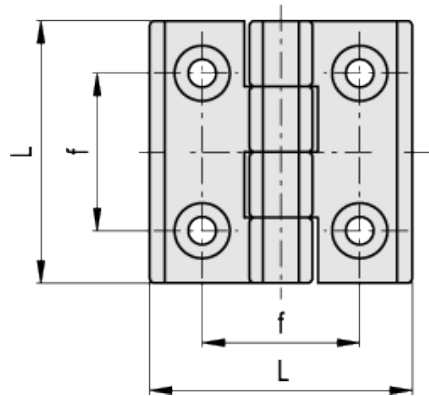
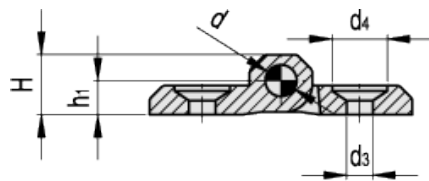
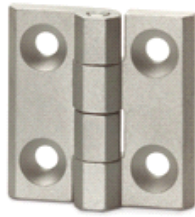


CMM-BL

Hinges



Elesa Standards		Main dimensions				Fitting		Weight	
Code	Description	L	f	H	h_1	d	d_3	d_4	g
428431	CMM.30-BL-SH-4	30	18	7.5	4.5	3	4.3	8.5	12
428531	CMM.40-BL-SH-5	40	25	9	5	4	5.3	10.2	24
428631	CMM.50-BL-SH-6	50	30	11.5	6	6	6.4	12.5	43
428731	CMM.60-BL-SH-8	60	36	15	8	8	8.3	16.2	85

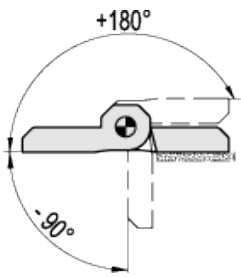
Material
Aluminium, matte finish.

Rotation pin
AISI 303 stainless steel.

Standard execution
Pass-through holes for countersunk head screws.

Rotation angle (approximate value)

Max 270° (-90° and +180° being 0° the condition where the two interconnected surfaces are on the same plane).
Do not exceed the rotation angle limit so as not to prejudice the hinge mechanical performance.



STANDARD MACHINE ELEMENTS WORLDWIDE

ELESA models all rights reserved in accordance with the law. Always mention the source when reproducing our drawings.