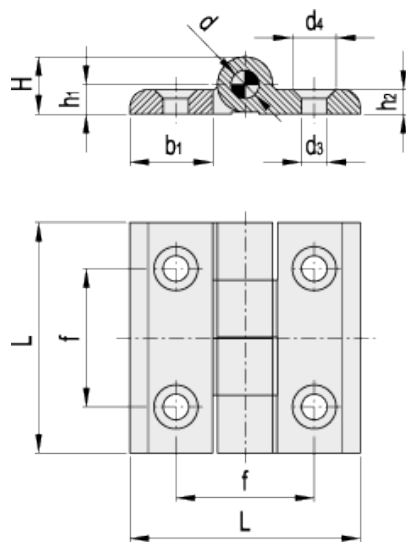


CMM-AL

Hinge



Elesa Standards		Main dimensions						Fitting			Weight
Code	Description	L	f	H	h ₁	h ₂	b ₁	d	d ₃	d ₄	g
428649	CMM-AL-40-SH-5	40	25	10.5	5.5	5	17	4	5.5	10.5	25
428651	CMM-AL-50-SH-5	50	30	12.5	6.5	6	22	6	5.5	10.5	50
428652	CMM-AL-50-SH-6	50	30	12.5	6.5	6	22	6	6.5	12.5	47
428655	CMM-AL-60-SH-8	60	36	16.5	8.5	8	25	8	8.5	16.5	94

Material
Anodised aluminium.

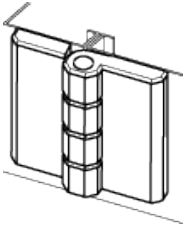
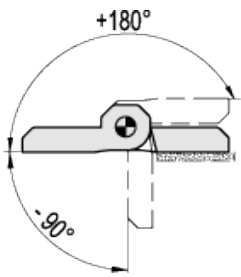
Colour
Natural, matte finish.

Rotation pin
AISI 304 stainless steel.

Standard execution
Pass-through holes for countersunk head screws.

Rotation angle (approximate value)

Max 270° (-90° and +180° being 0° the condition where the two interconnected surfaces are on the same plane).
Do not exceed the rotation angle limit so as not to prejudice the hinge mechanical performance.



elesa

STANDARD MACHINE ELEMENTS WORLDWIDE

ELESA models all rights reserved in accordance with the law. Always mention the source when reproducing our drawings.