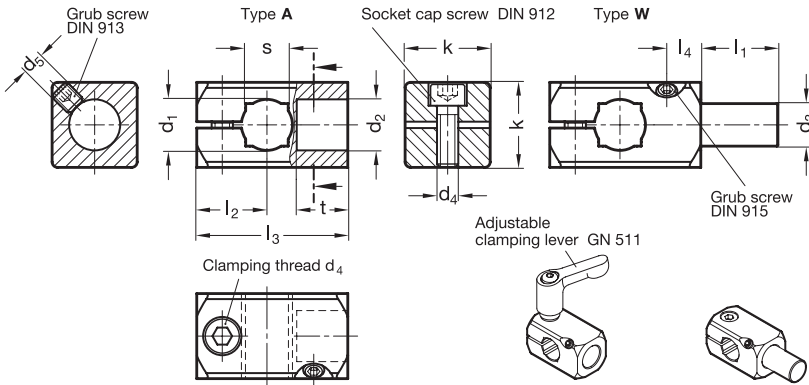



Range extended!



3 Type
A with bore
W with bolt

1 d_1 Bore B for shaft tol. h11	2 d_2 Type A	2 d_3 Type W	k	d_4 Clamping thread	d_5	l_1	l_2	l_3	l_4	t	s Square V	Clamping lever for d_4  Distance sleeve
B 8	B 8	8	16	M 4	M 4	16	13	26	5,5	8	-	GN 511-M4-16
B 10	B 10	10	20	M 5	M 5	17	15,5	31,5	7	10	8	GN 511-M5-20
B 12	B 12	12	20	M 5	M 5	19	16,5	35,5	8	12	10	GN 511-M5-20
B 15	B 15	15	25	M 6	M 6	21	20	43,5	10	15	12	GN 511-M6-25
B 16	B 16	16	25	M 6	M 6	24	20	45	11	16	-	GN 511-M6-25
B 20	B 20	20	30	M 6	M 6	26	22	51	12	18	16	GN 511-M6-30

Specification

- Aluminium
 - matt, slide ground **MT**
 - anodized, black **ELS**
- Bolt (Type W)
Steel zinc plated, blue passivated
- Socket cap screw DIN 912
Stainless Steel AISI 304
- Grub screw DIN 913 (Type A)
Stainless Steel AISI 304
- Grub screw DIN 915 (Type W)
Stainless Steel AISI 304
- Adjustable clamping levers GN 511
 - Zinc die casting
 - Inserts / Distance bushings
Stainless Steel AISI 303 → Page 1086
- Stainless Steel characteristics → Page 1144
- RoHS-compliant

4

Information

The T-Clamp mountings GN 476 (Type W) are an alternative to twistable two-way clamp mountings GN 475 if high angular forces are required.

The standard version of the clamping screw is a socket cap screw with hexagonal socket DIN 912. It can be replaced by an adjustable clamping lever GN 511 (see table of dimensions).

see also...

- Retaining rods / tubes GN 480.1 → Page 1085

T-Clamp mounting	1 d_1
	2 d_2
GN 476-B12-B12-A-MT	3 Type
	4 Finish

T-Clamp mounting with bolt	1 d_1
	2 d_3
GN 476-B12-12-W-ELS	3 Type
	4 Finish