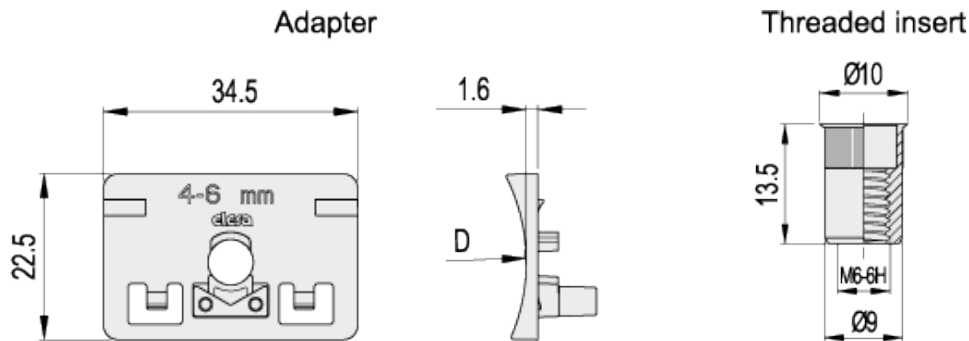


APC

Adapter for PC support clamp
for round tubes



ELESA Original design



technical informations

Material

Glass-fibre reinforced polyamide based (PA) technopolymer. Resistant to solvents, oils, greases and other chemical agents.

Colour

RAL 7042 grey, matte finish.

Features and applications

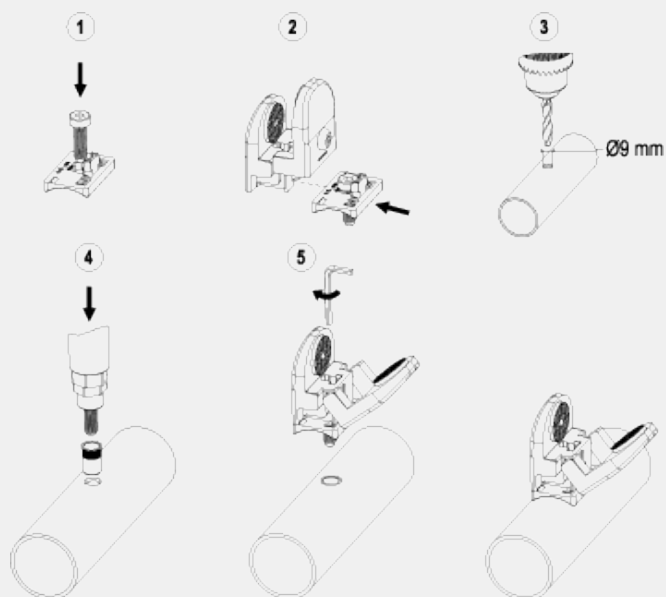
Kit for installation of PC support clamp on round tubes (thickness max. = 2 mm). The kit includes a technopolymer adapter, a M6 zinc-plated steel threaded insert to install with a normal riveter on the tube and a M6 cylindrical head screw.

The adapters give the best aesthetic result for panels of thickness between 4 and 6 mm and tubes with diameters as follows:

- 30 to 34 mm
- 40 to 43 mm
- 48 to 52 mm.

Assembly instructions

1. Insert the M6 shorted cylindrical head screw with DIN 7984 hexagon socket into the plastic adapter.
2. Insert the adapter into the slot of PC until the catch bracket clicks into position.
3. Drill a hole in the tube of 9 mm.
4. Fit the threaded insert on the tube with a riveter.
5. Install the support clamp on the tube by tightening the screw into the threaded insert.



Standard Elements		Main dimensions	For tubes Ø	Weight
Code	Description	D		g
49291	APC.30-34	34	30 ÷ 34	5
49293	APC.40-43	43	40 ÷ 43	5
49295	APC.48-52	52	48 ÷ 52	5



ELESA models all rights reserved in accordance with the law. Always mention the source when reproducing our drawings.

STANDARD MACHINE ELEMENTS WORLDWIDE