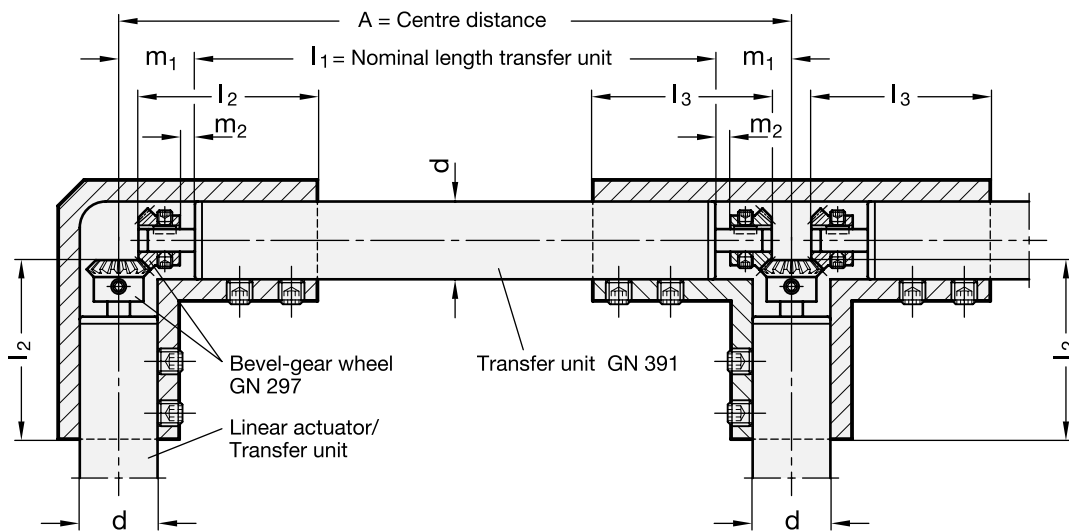
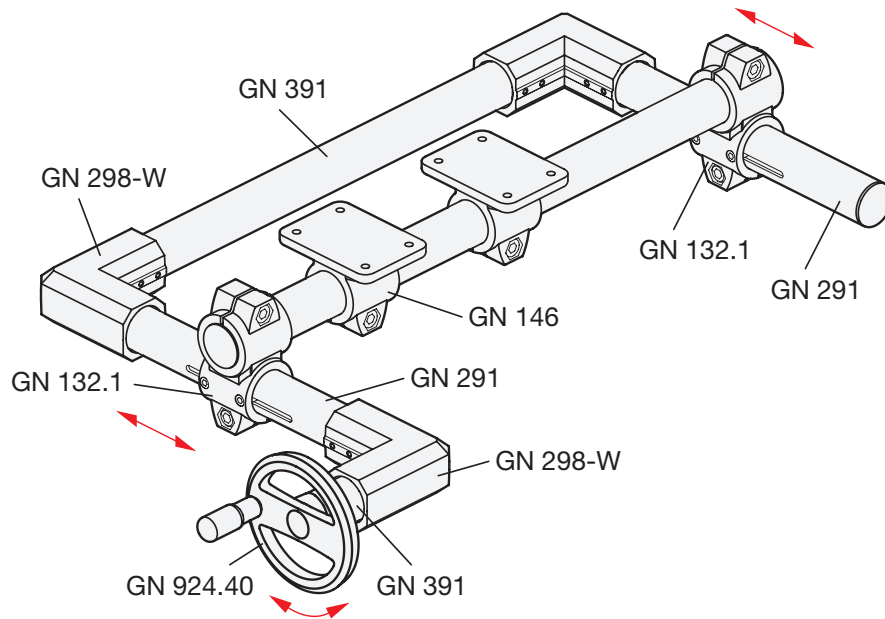


Bevel gear wheels and linear actuator/transfer unit assembled.

Assembly of linear actuators / transfer units with bevel gear wheels in housings GN 298

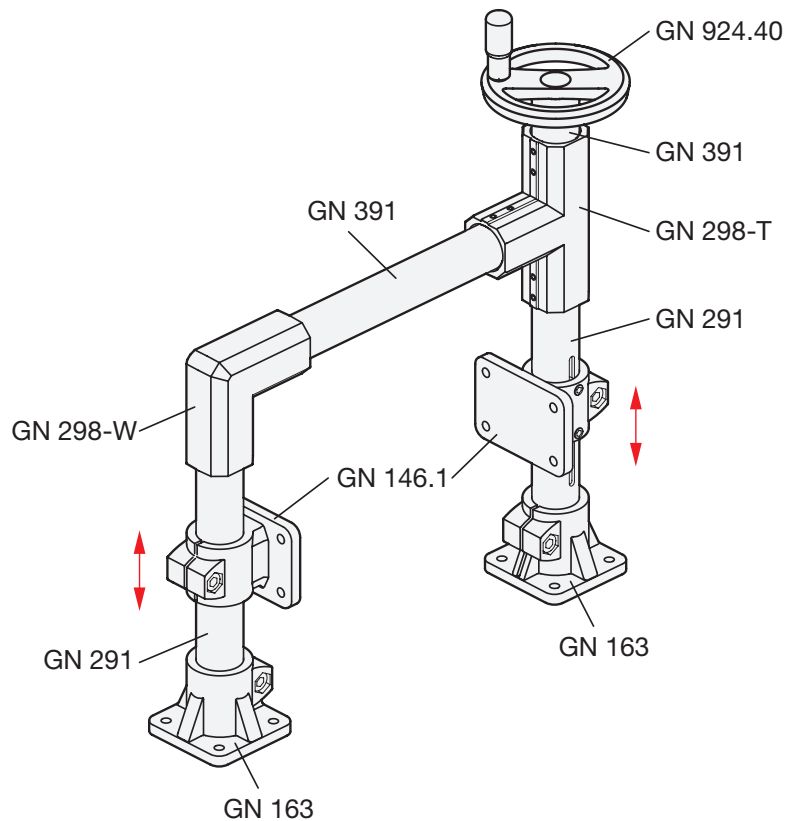


d ∅ Linear actuator ∅ Transfer unit GN 391	l ₂	l ₃	m ₁	m ₂	Bevel gear wheel	Housing	Length of the transfer unit GN 391
18	42	41	20	4	GN 297-17.5-K6	GN 298-28-B18-W/T-SW	l ₁ = A - 2 x m ₁
30	58	57	25	1	GN 297-26-K8	GN 298-40-B30-W/T-SW	
40	74	72	32	1	GN 297-35-K12	GN 298-50-B40-W/T-SW	
50	85	82	32	1	GN 297-35-K12	GN 298-50-B40-W/T-SW	



Two parallel sliding linear actuators are connected with a transfer unit GN 391.

The angular housing GN 298-W including the bevel gear wheels GN 297 and another transfer unit GN 391 connect the handwheel with the system. The handwheel is placed in a rectangular position to the moving axes.



Two linear actuators GN 291 are connected with a transfer unit GN 391 and so two flanged linear actuator connectors GN 146.1 will be moved in parallel.

The T- and angular gears GN 298-T/-W including the assembled bevel gear wheels GN 297 and another transfer unit GN 391 connect the handwheel with the system. The handwheel is (placed) in a parallel position to the moving axes.