

GN 990

Construction tubings

•Material

- Steel **ST**, zinc-plated **ZB**, blue anodised.
- Aluminium **AL**, blank **BL**, untreated.
- Aluminium **AL**, anodised **EL**, natural colour.

Features and applications

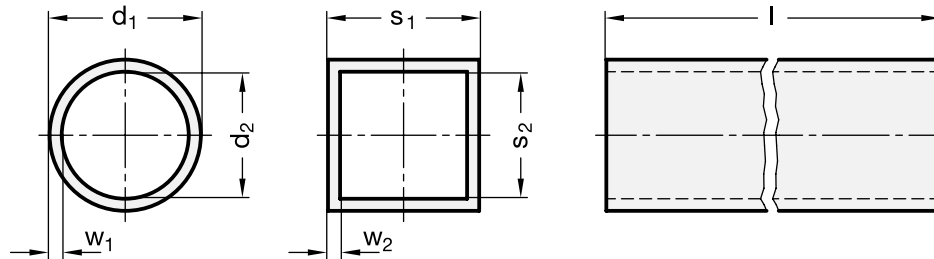
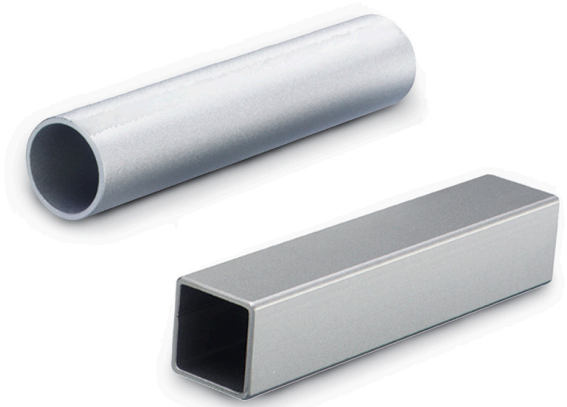
Construction tubings GN 990 can be supplied in any length up to 3000 mm.

The tolerances specified for the outside diameter of the round construction tubings comply with the requirements for split mono-block connector clamps. Otherwise the tolerances comply with DIN 2391, DIN 2395 and DIN 2462.

Two-piece connector clamps allow obviously larger tolerances on round and square construction tubings.


Accessories

- Tube end plugs GN 991 (see page 112).
- Insert bushes GN 992 (see page 114).
- Insert bushes GN 992.5 (see page 115).



Standard Elements	Main dimensions							Δ
Description	d1	s1	$l_{\pm 0,5}^{**}$	d2	s2	w1	w2	g
GN 990-ST-D10-100-ZB	D10 ± 0.1	-	100	7	-	1.5	-	31
GN 990-ST-D12-100-ZB	D12 ± 0.1	-	100	9	-	1.5	-	40
GN 990-ST-D14-100-ZB	D14 ± 0.1	-	100	11	-	1.5	-	46
GN 990-ST-D15-100-ZB	D15 ± 0.1	-	100	12	-	1.5	-	52
GN 990-ST-D16-100-ZB	D16 ± 0.1	-	100	13	-	1.5	-	54
GN 990-ST-D18-100-ZB	D18 ± 0.1	-	100	15	-	1.5	-	61
GN 990-ST-D20-100-ZB	D20 ± 0.1	-	100	16	-	2	-	89
GN 990-ST-D25-100-ZB	D25 ± 0.1	-	100	21	-	2	-	113
GN 990-ST-D30-100-ZB	D30 ± 0.1	-	100	26	-	2	-	138
GN 990-ST-D32-100-ZB	D32 ± 0.15	-	100	28	-	2	-	148
GN 990-ST-D35-100-ZB	D35 ± 0.15	-	100	31	-	2	-	163
GN 990-ST-D40-100-ZB	D40 ± 0.15	-	100	34	-	3	-	274
GN 990-ST-D42-100-ZB	D42 ± 0.2	-	100	36	-	3	-	288
GN 990-ST-D45-100-ZB	D45 ± 0.2	-	100	39	-	3	-	312
GN 990-ST-D48-100-ZB	D48 ± 0.2	-	100	42	-	3	-	334
GN 990-ST-D50-100-ZB	D50 ± 0.2	-	100	44	-	3	-	348
GN 990-ST-D55-100-ZB	D55 ± 0.25	-	100	47	-	4	-	506
GN 990-ST-D60-100-ZB	D60 ± 0.25	-	100	52	-	4	-	550

** available are all length in 1 mm steps, max. length 3000 mm.

Standard Elements	Main dimensions							
Description	d1	s1	l ±0,5**	d2	s2	w1	w2	g
GN 990-ST-V20-100-ZB	-	V20	100	-	16	-	2	112
GN 990-ST-V25-100-ZB	-	V25	100	-	21	-	2	144
GN 990-ST-V30-100-ZB	-	V30	100	-	26	-	2	175
GN 990-ST-V35-100-ZB	-	V35	100	-	31	-	2	206
GN 990-ST-V40-100-ZB	-	V40	100	-	34	-	3	333
GN 990-ST-V45-100-ZB	-	V45	100	-	39	-	3	380
GN 990-ST-V50-100-ZB	-	V50	100	-	44	-	3	428
GN 990-AL-D10-100-*	D10 ±0.1	-	100	7	-	1.5	-	11
GN 990-AL-D12-100-*	D12 ±0.1	-	100	9	-	1.5	-	14
GN 990-AL-D14-100-*	D14 ±0.1	-	100	11	-	1.5	-	16
GN 990-AL-D15-100-*	D15 ±0.1	-	100	12	-	1.5	-	18
GN 990-AL-D16-100-*	D16 ±0.1	-	100	13	-	1.5	-	18
GN 990-AL-D18-100-*	D18 ±0.1	-	100	15	-	1.5	-	21
GN 990-AL-D20-100-*	D20 ±0.1	-	100	16	-	2	-	31
GN 990-AL-D25-100-*	D25 ±0.1	-	100	21	-	2	-	39
GN 990-AL-D30-100-*	D30 ±0.1	-	100	26	-	2	-	48
GN 990-AL-D32-100-*	D32 ±0.15	-	100	28	-	2	-	51
GN 990-AL-D35-100-*	D35 ±0.15	-	100	31	-	2	-	56
GN 990-AL-D40-100-*	D40 ±0.15	-	100	34	-	3	-	94
GN 990-AL-D42-100-*	D42 ±0.2	-	100	36	-	3	-	99
GN 990-AL-D45-100-*	D45 ±0.2	-	100	39	-	3	-	107
GN 990-AL-D48-100-*	D48 ±0.2	-	100	42	-	3	-	115
GN 990-AL-D50-100-*	D50 ±0.2	-	100	44	-	3	-	120
GN 990-AL-D60-100-*	D60 ±0.25	-	100	52	-	4	-	188
GN 990-AL-V10-100-*	-	V10	100	-	8	-	1.5	10
GN 990-AL-V12-100-*	-	V12	100	-	10	-	1.5	12
GN 990-AL-V16-100-*	-	V16	100	-	14	-	1.5	16
GN 990-AL-V20-100-*	-	V20	100	-	16	-	2	39
GN 990-AL-V25-100-*	-	V25	100	-	21	-	2	50
GN 990-AL-V30-100-*	-	V30	100	-	26	-	2	61
GN 990-AL-V35-100-*	-	V35	100	-	31	-	2	71
GN 990-AL-V40-100-*	-	V40	100	-	34	-	3	120
GN 990-AL-V45-100-*	-	V45	100	-	39	-	3	136
GN 990-AL-V50-100-*	-	V50	100	-	44	-	3	152

* Complete the description of the standard item needed by adding the finish of the aluminium construction tubings: BL (blank) or EL (anodized).

** available are all length in 1 mm steps, max. length 3000 mm.