

GN 241

Tube connectors

•Material

Aluminium.

•Finish

- Version **SW**: RAL 9005 black colour, matte finish, epoxy resin coating.
- Version **BL**: blank, matte shot-blasted.

•Clamping screws

- Identification no. **1**: with two clamping screws DIN 912 and nuts DIN 985, zinc-plated.
- Identification no. **2**: with two AISI 304 stainless steel-clamping screws DIN 912 and nuts DIN 985.

•Assembly

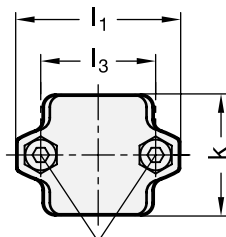
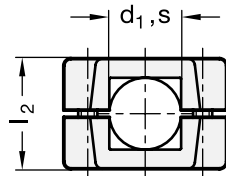
The standard clamping bolts are socket cap screws DIN 912, supplied assembled. They can be replaced by clamping kits GN 911 (description see table of dimensions).

Features and applications

The clamping bores of the tube connectors GN 241 are not machined and designed for construction tubings GN 990 or DIN 2391, DIN 2395 and DIN 2462 respectively.

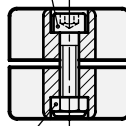
Accessories

- Construction tubings GN 990 (see page 109ff.).
- Clamping kits GN 911 (clamping handles GN 300.1 with distance bushing) see page 116.



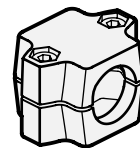
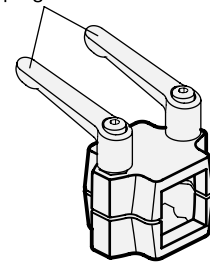
Clamping thread d_2


Clamping screw
Socket cap screw DIN 912



Hexagon nut DIN 985
self-locking (Polyamide ring)

Adjustable
clamping lever GN 911



Standard Elements	Main dimensions							Clamping kits for d ₂	
Description	d ₁	s	k Clamping length	d ₂	l ₁	l ₂	l ₃		g
GN 241-B20-50-1-*	B20	-	50	M8	68	46	48	GN 911-M8-40	200
GN 241-B25-50-1-*	B25	-	50	M8	68	46	48	GN 911-M8-40	195
GN 241-B30-50-1-*	B30	-	50	M8	68	46	48	GN 911-M8-40	190
GN 241-B30-60-1-*	B30	-	60	M8	79	59	58	GN 911-M8-55	190
GN 241-B32-60-1-*	B32	-	60	M8	79	59	58	GN 911-M8-55	190
GN 241-B35-60-1-*	B35	-	60	M8	79	59	58	GN 911-M8-55	190
GN 241-B40-60-1-*	B40	-	60	M8	79	59	58	GN 911-M8-55	190
GN 241-B40-76-1-*	B40	-	76	M10	98	70	73	GN 911-M10-63	525
GN 241-B42-76-1-*	B42	-	76	M10	98	70	73	GN 911-M10-63	505
GN 241-B45-76-1-*	B45	-	76	M10	98	70	73	GN 911-M10-63	500
GN 241-B48-76-1-*	B48	-	76	M10	98	70	73	GN 911-M10-63	490
GN 241-B50-76-1-*	B50	-	76	M10	98	70	73	GN 911-M10-63	475
GN 241-V20-50-1-*	-	V20	50	M8	68	46	48	GN 911-M8-40	195
GN 241-V25-50-1-*	-	V25	50	M8	68	46	48	GN 911-M8-40	190
GN 241-V30-50-1-*	-	V30	50	M8	68	46	48	GN 911-M8-40	180
GN 241-V30-60-1-*	-	V30	60	M8	79	59	58	GN 911-M8-55	180
GN 241-V35-60-1-*	-	V35	60	M8	79	59	58	GN 911-M8-55	180
GN 241-V40-60-1-*	-	V40	60	M8	79	59	58	GN 911-M8-55	180
GN 241-V40-76-1-*	-	V40	76	M10	98	70	73	GN 911-M10-63	450
GN 241-V45-76-1-*	-	V45	76	M10	98	70	73	GN 911-M10-63	450
GN 241-V50-76-1-*	-	V50	76	M10	98	70	73	GN 911-M10-63	450
GN 241-B20-50-2-*	B20	-	50	M8	68	46	48	GN 911-M8-40	200
GN 241-B25-50-2-*	B25	-	50	M8	68	46	48	GN 911-M8-40	195
GN 241-B30-50-2-*	B30	-	50	M8	68	46	48	GN 911-M8-40	190
GN 241-B30-60-2-*	B30	-	60	M8	79	59	58	GN 911-M8-55	190
GN 241-B32-60-2-*	B32	-	60	M8	79	59	58	GN 911-M8-55	190
GN 241-B35-60-2-*	B35	-	60	M8	79	59	58	GN 911-M8-55	190
GN 241-B40-60-2-*	B40	-	60	M8	79	59	58	GN 911-M8-55	190
GN 241-B40-76-2-*	B40	-	76	M10	98	70	73	GN 911-M10-63	525
GN 241-B42-76-2-*	B42	-	76	M10	98	70	73	GN 911-M10-63	505
GN 241-B45-76-2-*	B45	-	76	M10	98	70	73	GN 911-M10-63	500
GN 241-B48-76-2-*	B48	-	76	M10	98	70	73	GN 911-M10-63	490
GN 241-B50-76-2-*	B50	-	76	M10	98	70	73	GN 911-M10-63	475
GN 241-V20-50-2-*	-	V20	50	M8	68	46	48	GN 911-M8-40	195
GN 241-V25-50-2-*	-	V25	50	M8	68	46	48	GN 911-M8-40	190
GN 241-V30-50-2-*	-	V30	50	M8	68	46	48	GN 911-M8-40	180
GN 241-V30-60-2-*	-	V30	60	M8	79	59	58	GN 911-M8-55	180
GN 241-V35-60-2-*	-	V35	60	M8	79	59	58	GN 911-M8-55	180
GN 241-V40-60-2-*	-	V40	60	M8	79	59	58	GN 911-M8-55	180
GN 241-V40-76-2-*	-	V40	76	M10	98	70	73	GN 911-M10-63	450
GN 241-V45-76-2-*	-	V45	76	M10	98	70	73	GN 911-M10-63	450
GN 241-V50-76-2-*	-	V50	76	M10	98	70	73	GN 911-M10-63	450

* Complete the description of the standard item needed by adding the finish of the connector clamps: BL (blank) or SW (black).