

# GN 191

## T-angle connector clamps

### •Material

Aluminium.

### •Finish

- Version **SW**: RAL 9005 black colour, matte finish, epoxy resin coating.
- Version **BL**: blank, matte shot-blasted.

### •Clamping screws

- Identification no. **1**: with two clamping screws DIN 912 and nuts DIN 985, zinc-plated.
- Identification no. **2**: with two AISI 304 stainless steel-clamping screws DIN 912 and nuts DIN 985.

### •Assembly

The standard clamping bolts are socket cap screws DIN 912, supplied assembled. They can be replaced by clamping kits GN 911 (description see table of dimensions).

### Features and applications

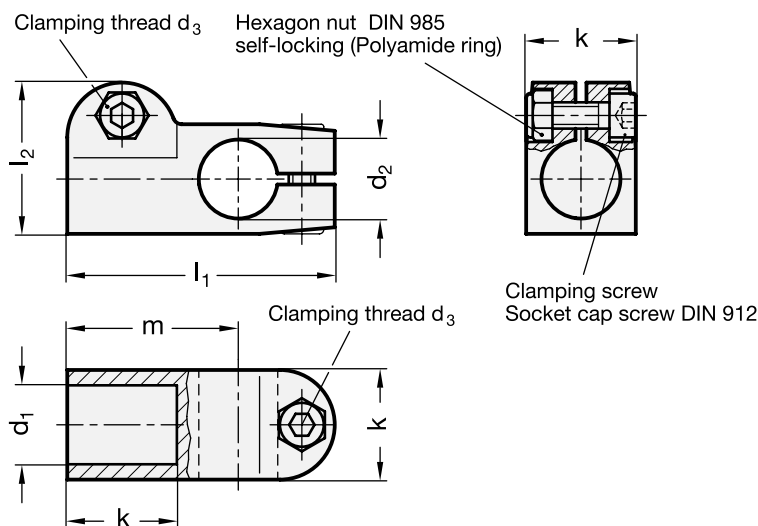
The clamping bores of the T-angle connector clamps GN 191 are mechanically machined and designed for construction tubings GN 990 or DIN 2391, DIN 2395 and DIN 2462 respectively.

### Accessories

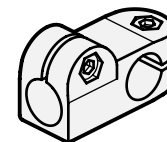
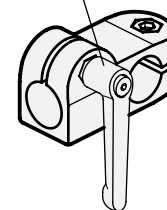
- Construction tubings GN 990 (see page 109ff.).
- Clamping kits GN 911 (clamping handles GN 300.1 with distance bushing) see page 116.

### Special designs on request (For sufficient quantities)

Different combinations of bores  $d_1/d_2$ .



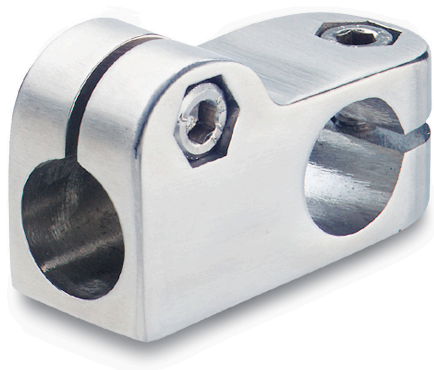
Adjustable clamping lever GN 911



Standard Elements	Main dimensions							Clamping kits for $d_3$	⚖ g
Description	$d_1$	$d_2$	$d_3$	k Clamping length	$l_1$	$l_2$	m		
GN 191-B10-B10-1-*	B10	B10	M6	25	61	34.5	39	GN 911-M6-22	97
GN 191-B12-B12-1-*	B12	B12	M6	25	61	34.5	39	GN 911-M6-22	93
GN 191-B14-B14-1-*	B14	B14	M6	25	61	34.5	39	GN 911-M6-22	89
GN 191-B15-B15-1-*	B15	B15	M6	25	61	34.5	39	GN 911-M6-22	86
GN 191-B16-B16-1-*	B16	B16	M6	25	61	34.5	39	GN 911-M6-22	84
GN 191-B18-B18-1-*	B18	B18	M6	25	61	34.5	39	GN 911-M6-22	81
GN 191-B10-B10-2-*	B10	B10	M6	25	61	34.5	39	GN 911-M6-22	97
GN 191-B12-B12-2-*	B12	B12	M6	25	61	34.5	39	GN 911-M6-22	93
GN 191-B14-B14-2-*	B14	B14	M6	25	61	34.5	39	GN 911-M6-22	89
GN 191-B15-B15-2-*	B15	B15	M6	25	61	34.5	39	GN 911-M6-22	86
GN 191-B16-B16-2-*	B16	B16	M6	25	61	34.5	39	GN 911-M6-22	84
GN 191-B18-B18-2-*	B18	B18	M6	25	61	34.5	39	GN 911-M6-22	81

\* Complete the description of the standard item needed by adding the finish of the connector clamps: BL (blank) or SW (black).

## T-angle connector clamps



**•Material**

AISI CF-8 stainless steel **NI**, matte polished.

**•Clamping screws**

Identification no. **2**: with two AISI 304 stainless steel-clamping screws DIN 912 and nuts DIN 985.

**•Assembly**

The standard clamping bolts are socket cap screws DIN 912, supplied assembled. They can be replaced by clamping kits GN 911 (description see table of dimensions).

**Features and applications**

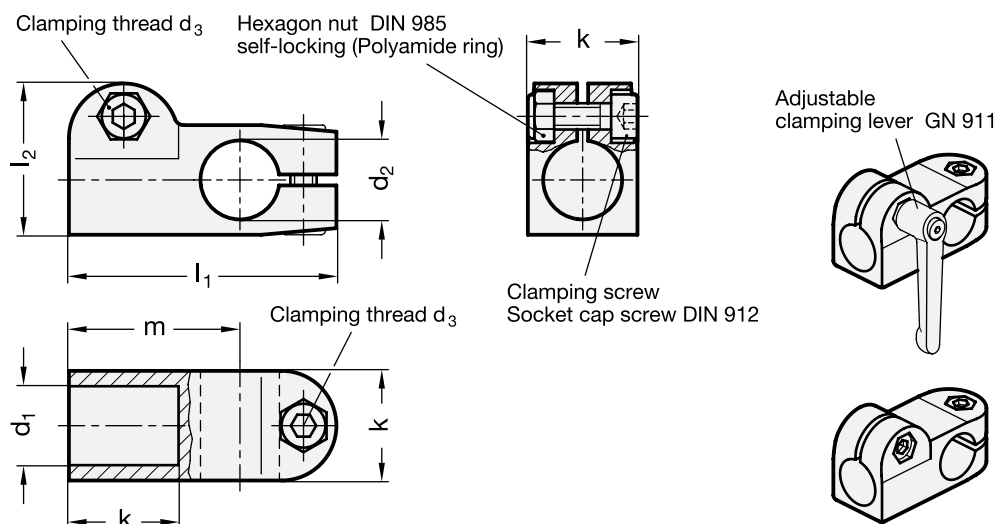
The clamping bores of the T-angle connector clamps GN 191-NI are mechanically machined and designed for construction tubings GN 990 or DIN 2391, DIN 2395 and DIN 2462 respectively.

**Accessories**

- Construction tubings GN 990 (see page 109ff.).
- Clamping kits GN 911 (clamping handles GN 300.1 with distance bushing) see page 116.

**Special designs on request** (For sufficient quantities)

Different combinations of bores  $d_1/d_2$ .



Standard Elements	Main dimensions							Clamping kits for $d_3$	⚖ g
	$d_1$	$d_2$	$d_3$	k Clamping length	$l_1$	$l_2$	m		
GN 191-B12-B12-2-NI	B12	B12	M6	25	61	34.5	39	GN 911-M6-22	240
GN 191-B14-B14-2-NI	B14	B14	M6	25	61	34.5	39	GN 911-M6-22	220
GN 191-B16-B16-2-NI	B16	B16	M6	25	61	34.5	39	GN 911-M6-22	200
GN 191-B18-B18-2-NI	B18	B18	M6	25	61	34.5	39	GN 911-M6-22	175