

# GN 141

## Flanged two-way connector clamps

### •Material

Aluminium.

### •Finish

- Version **SW**: RAL 9005 black colour, matte finish, epoxy resin coating.
- Version **BL**: blank, matte shot-blasted.

### •Clamping screws

- Identification no. **1**: with four clamping screws DIN 912 and nuts DIN 985, zinc-plated.
- Identification no. **2**: with four AISI 304 stainless steel-clamping screws DIN 912 and nuts DIN 985.

### •Assembly

The standard clamping bolts are socket cap screws DIN 912, supplied assembled. They can be replaced by clamping kits GN 911 (description see table of dimensions).

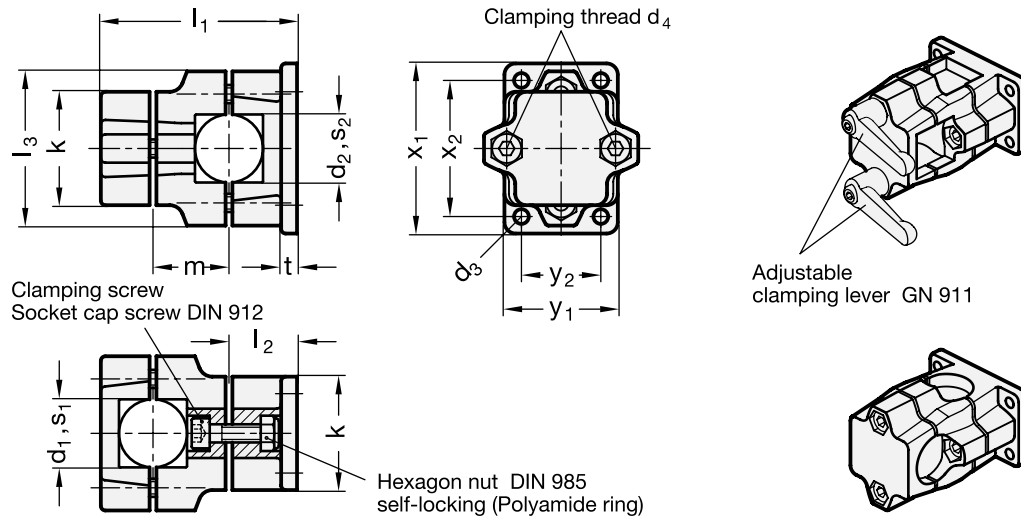
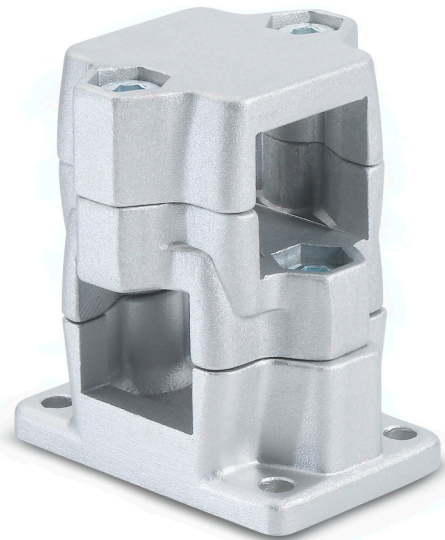
### Features and applications

The clamping bores of the flanged two-way connector clamps GN 141 are unmachined and designed for construction tubings GN 990 or DIN 2391, DIN 2395 and DIN 2462 respectively.

Bores and square bores of the same nominal size can be assembled in any combination. For instance, nominal size 20 has the following combination options: B20-B20, B20-V20, V20-B20 and V20-V20.

### Accessories

- Construction tubings GN 990 (see page 109ff.).
- Clamping kits GN 911 (clamping handles GN 300.1 with distance bushing) see page 116.



Standard Elements	Main dimensions																Clamping kits for d <sub>4</sub>	⚖ g
	d <sub>1</sub>	s <sub>1</sub>	d <sub>2</sub>	s <sub>2</sub>	d <sub>3</sub>	d <sub>4</sub>	Clamping length				x <sub>1</sub>	x <sub>2</sub>	y <sub>1</sub>	y <sub>2</sub>				
GN 141-B20-B20-1-*	B20	-	B20	-	6.5	M8	50	89	30	68	36	7	75	60	50	35	GN 911-M8-35	402
GN 141-B25-B25-1-*	B25	-	B25	-	6.5	M8	50	89	30	68	36	7	75	60	50	35	GN 911-M8-35	386
GN 141-B30-B30-1-*	B30	-	B30	-	6.5	M8	50	89	30	68	36	7	75	60	50	35	GN 911-M8-35	368
GN 141-B40-B40-1-*	B40	-	B40	-	11	M10	76	136	46	98	55	14	115	90	76	50	GN 911-M10-63	1118
GN 141-B42-B42-1-*	B42	-	B42	-	11	M10	76	136	46	98	55	14	115	90	76	50	GN 911-M10-63	1094
GN 141-B45-B45-1-*	B45	-	B45	-	11	M10	76	136	46	98	55	14	115	90	76	50	GN 911-M10-63	1074
GN 141-B48-B48-1-*	B48	-	B48	-	11	M10	76	136	46	98	55	14	115	90	76	50	GN 911-M10-63	1059
GN 141-B50-B50-1-*	B50	-	B50	-	11	M10	76	136	46	98	55	14	115	90	76	50	GN 911-M10-63	1031

\* Complete the description of the standard item needed by adding the finish of the connector clamps: BL (blank) or SW (black).

Standard Elements	Main dimensions																Clamping kits for d4	g
	Description	d1	s1	d2	s2	d3	d4	k Clamping length	l1	l2	l3	m	t	x1	x2	y1		
GN 141-B20-V20-1-*	B20	-	-	V20	6.5	M8	50	89	30	68	36	7	75	60	50	35	GN 911-M8-35	395
GN 141-B25-V25-1-*	B25	-	-	V25	6.5	M8	50	89	30	68	36	7	75	60	50	35	GN 911-M8-35	374
GN 141-B30-V30-1-*	B30	-	-	V30	6.5	M8	50	89	30	68	36	7	75	60	50	35	GN 911-M8-35	355
GN 141-B40-V40-1-*	B40	-	-	V40	11	M10	76	136	46	98	55	14	115	90	76	50	GN 911-M10-63	1002
GN 141-B45-V45-1-*	B45	-	-	V45	11	M10	76	136	46	98	55	14	115	90	76	50	GN 911-M10-63	946
GN 141-B50-V50-1-*	B50	-	-	V50	11	M10	76	136	46	98	55	14	115	90	76	50	GN 911-M10-63	922
GN 141-V20-V20-1-*	-	V20	-	V20	6.5	M8	50	89	30	68	36	7	75	60	50	35	GN 911-M8-35	392
GN 141-V25-V25-1-*	-	V25	-	V25	6.5	M8	50	89	30	68	36	7	75	60	50	35	GN 911-M8-35	368
GN 141-V30-V30-1-*	-	V30	-	V30	6.5	M8	50	89	30	68	36	7	75	60	50	35	GN 911-M8-35	339
GN 141-V40-V40-1-*	-	V40	-	V40	11	M10	76	136	46	98	55	14	115	90	76	50	GN 911-M10-63	1091
GN 141-V45-V45-1-*	-	V45	-	V45	11	M10	76	136	46	98	55	14	115	90	76	50	GN 911-M10-63	1040
GN 141-V50-V50-1-*	-	V50	-	V50	11	M10	76	136	46	98	55	14	115	90	76	50	GN 911-M10-63	975
GN 141-V20-B20-1-*	-	V20	B20	-	6.5	M8	50	89	30	68	36	7	75	60	50	35	GN 911-M8-35	396
GN 141-V25-B25-1-*	-	V25	B25	-	6.5	M8	50	89	30	68	36	7	75	60	50	35	GN 911-M8-35	375
GN 141-V30-B30-1-*	-	V30	B30	-	6.5	M8	50	89	30	68	36	7	75	60	50	35	GN 911-M8-35	356
GN 141-V40-B40-1-*	-	V40	B40	-	11	M10	76	136	46	98	55	14	115	90	76	50	GN 911-M10-63	1034
GN 141-V45-B45-1-*	-	V45	B45	-	11	M10	76	136	46	98	55	14	115	90	76	50	GN 911-M10-63	980
GN 141-V50-B50-1-*	-	V50	B50	-	11	M10	76	136	46	98	55	14	115	90	76	50	GN 911-M10-63	959
GN 141-B20-B20-2-*	B20	-	B20	-	6.5	M8	50	89	30	68	36	7	75	60	50	35	GN 911-M8-35	402
GN 141-B25-B25-2-*	B25	-	B25	-	6.5	M8	50	89	30	68	36	7	75	60	50	35	GN 911-M8-35	386
GN 141-B30-B30-2-*	B30	-	B30	-	6.5	M8	50	89	30	68	36	7	75	60	50	35	GN 911-M8-35	368
GN 141-B40-B40-2-*	B40	-	B40	-	11	M10	76	136	46	98	55	14	115	90	76	50	GN 911-M10-63	1118
GN 141-B42-B42-2-*	B42	-	B42	-	11	M10	76	136	46	98	55	14	115	90	76	50	GN 911-M10-63	1094
GN 141-B45-B45-2-*	B45	-	B45	-	11	M10	76	136	46	98	55	14	115	90	76	50	GN 911-M10-63	1074
GN 141-B48-B48-2-*	B48	-	B48	-	11	M10	76	136	46	98	55	14	115	90	76	50	GN 911-M10-63	1059
GN 141-B50-B50-2-*	B50	-	B50	-	11	M10	76	136	46	98	55	14	115	90	76	50	GN 911-M10-63	1031
GN 141-B20-V20-2-*	B20	-	-	V20	6.5	M8	50	89	30	68	36	7	75	60	50	35	GN 911-M8-35	395
GN 141-B25-V25-2-*	B25	-	-	V25	6.5	M8	50	89	30	68	36	7	75	60	50	35	GN 911-M8-35	374
GN 141-B30-V30-2-*	B30	-	-	V30	6.5	M8	50	89	30	68	36	7	75	60	50	35	GN 911-M8-35	355
GN 141-B40-V40-2-*	B40	-	-	V40	11	M10	76	136	46	98	55	14	115	90	76	50	GN 911-M10-63	1002
GN 141-B45-V45-2-*	B45	-	-	V45	11	M10	76	136	46	98	55	14	115	90	76	50	GN 911-M10-63	946
GN 141-B50-V50-2-*	B50	-	-	V50	11	M10	76	136	46	98	55	14	115	90	76	50	GN 911-M10-63	922
GN 141-V20-V20-2-*	-	V20	-	V20	6.5	M8	50	89	30	68	36	7	75	60	50	35	GN 911-M8-35	392
GN 141-V25-V25-2-*	-	V25	-	V25	6.5	M8	50	89	30	68	36	7	75	60	50	35	GN 911-M8-35	368
GN 141-V30-V30-2-*	-	V30	-	V30	6.5	M8	50	89	30	68	36	7	75	60	50	35	GN 911-M8-35	339
GN 141-V40-V40-2-*	-	V40	-	V40	11	M10	76	136	46	98	55	14	115	90	76	50	GN 911-M10-63	1091
GN 141-V45-V45-2-*	-	V45	-	V45	11	M10	76	136	46	98	55	14	115	90	76	50	GN 911-M10-63	1040
GN 141-V50-V50-2-*	-	V50	-	V50	11	M10	76	136	46	98	55	14	115	90	76	50	GN 911-M10-63	975
GN 141-V20-B20-2-*	-	V20	B20	-	6.5	M8	50	89	30	68	36	7	75	60	50	35	GN 911-M8-35	396
GN 141-V25-B25-2-*	-	V25	B25	-	6.5	M8	50	89	30	68	36	7	75	60	50	35	GN 911-M8-35	375
GN 141-V30-B30-2-*	-	V30	B30	-	6.5	M8	50	89	30	68	36	7	75	60	50	35	GN 911-M8-35	356
GN 141-V40-B40-2-*	-	V40	B40	-	11	M10	76	136	46	98	55	14	115	90	76	50	GN 911-M10-63	1034
GN 141-V45-B45-2-*	-	V45	B45	-	11	M10	76	136	46	98	55	14	115	90	76	50	GN 911-M10-63	980
GN 141-V50-B50-2-*	-	V50	B50	-	11	M10	76	136	46	98	55	14	115	90	76	50	GN 911-M10-63	959

\* Complete the description of the standard item needed by adding the finish of the connector clamps: BL (blank) or SW (black).