

GN 134

Two-way connector clamps

•Material

Aluminium.

•Finish

- Version **SW**: RAL 9005 black colour, matte finish, epoxy resin coating.
- Version **BL**: blank, matte shot-blasted.

•Clamping screws

- Identification no. **1**: with four clamping screws DIN 912 and nuts DIN 985, zinc-plated.
- Identification no. **2**: with four AISI 304 stainless steel-clamping screws DIN 912 and nuts DIN 985.

•Assembly

The standard clamping bolts are socket cap screws DIN 912, supplied assembled. They can be replaced by clamping kits GN 911 (description see table of dimensions).

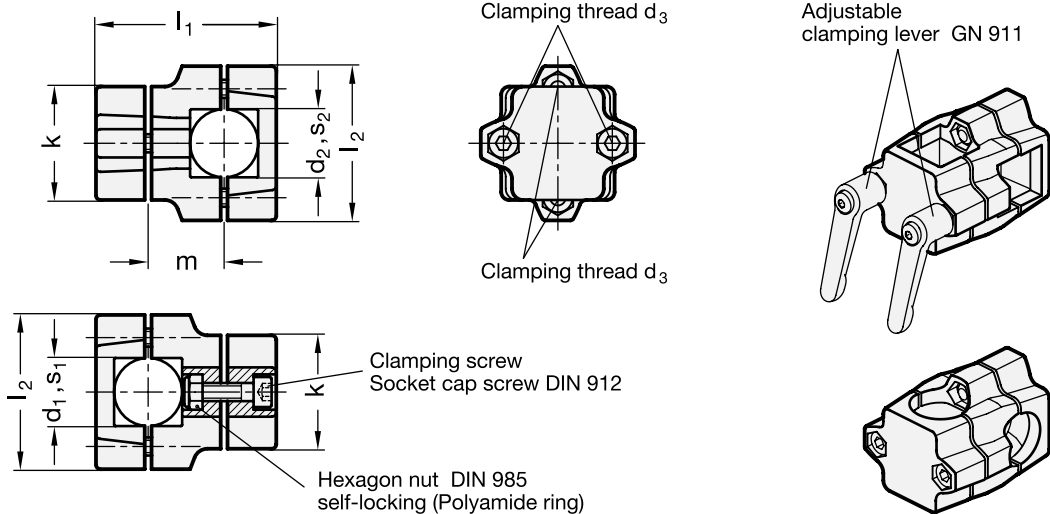
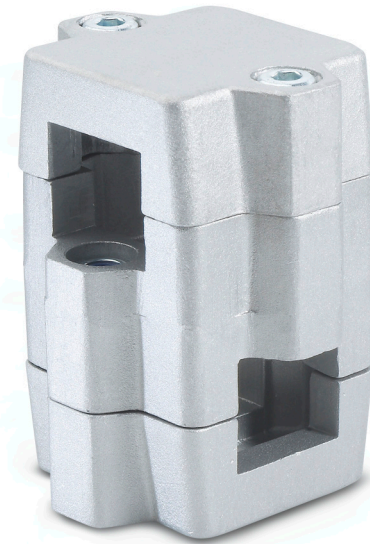
Features and applications


The clamping bores of the two-way connector clamps GN 134 are unmachined and are designed for construction tubings GN 990 or DIN 2391, DIN 2395 and DIN 2462 respectively. The versions with square bores are also suitable for **profile systems**.

Bores and square bores of the same nominal size can be assembled in any combination. For instance, nominal size 20 has the following combination options: B20-B20, B20-V20, V20-B20 and V20-V20.

Accessories

- Construction tubings GN 990 (see page 109ff.).
- Clamping kits GN 911 (clamping handles GN 300.1 with distance bushing) see page 116.



Standard Elements	Main dimensions									Clamping kits for d3	
Description	d1	s1	d2	s2	k Clamping length	d3	l1	l2	m		g
GN 134-B20-B20-50-1-*	B20	-	B20	-	50	M8	79.5	68	33.5	GN 911-M8-35	355
GN 134-B25-B25-50-1-*	B25	-	B25	-	50	M8	79.5	68	33.5	GN 911-M8-35	340
GN 134-B30-B30-50-1-*	B30	-	B30	-	50	M8	79.5	68	33.5	GN 911-M8-35	325
GN 134-B30-B30-60-1-*	B30	-	B30	-	60	M8	109	79	50	GN 911-M8-55	690
GN 134-B32-B32-60-1-*	B32	-	B32	-	60	M8	109	79	50	GN 911-M8-55	670
GN 134-B35-B35-60-1-*	B35	-	B35	-	60	M8	109	79	50	GN 911-M8-55	670
GN 134-B40-B40-60-1-*	B40	-	B40	-	60	M8	109	79	50	GN 911-M8-55	610
GN 134-B40-B40-76-1-*	B40	-	B40	-	76	M10	125	98	55	GN 911-M10-63	975
GN 134-B42-B42-76-1-*	B42	-	B42	-	76	M10	125	98	55	GN 911-M10-63	945
GN 134-B45-B45-76-1-*	B45	-	B45	-	76	M10	125	98	55	GN 911-M10-63	930
GN 134-B48-B48-76-1-*	B48	-	B48	-	76	M10	125	98	55	GN 911-M10-63	915
GN 134-B50-B50-76-1-*	B50	-	B50	-	76	M10	125	98	55	GN 911-M10-63	885
GN 134-B20-V20-50-1-*	B20	-	-	V20	50	M8	79.5	68	33.5	GN 911-M8-35	350
GN 134-B25-V25-50-1-*	B25	-	-	V25	50	M8	79.5	68	33.5	GN 911-M8-35	330
GN 134-B30-V30-50-1-*	B30	-	-	V30	50	M8	79.5	68	33.5	GN 911-M8-35	310
GN 134-B30-V30-60-1-*	B30	-	-	V30	60	M8	109	79	50	GN 911-M8-55	680
GN 134-B35-V35-60-1-*	B35	-	-	V35	60	M8	109	79	50	GN 911-M8-55	640
GN 134-B40-V40-60-1-*	B40	-	-	V40	60	M8	109	79	50	GN 911-M8-55	580
GN 134-B40-V40-76-1-*	B40	-	-	V40	76	M10	125	98	55	GN 911-M10-63	890
GN 134-B45-V45-76-1-*	B45	-	-	V45	76	M10	125	98	55	GN 911-M10-63	835
GN 134-B50-V50-76-1-*	B50	-	-	V50	76	M10	125	98	55	GN 911-M10-63	770
GN 134-V20-V20-50-1-*	-	V20	-	V20	50	M8	79.5	68	33.5	GN 911-M8-35	351
GN 134-V25-V25-50-1-*	-	V25	-	V25	50	M8	79.5	68	33.5	GN 911-M8-35	325
GN 134-V30-V30-50-1-*	-	V30	-	V30	50	M8	79.5	68	33.5	GN 911-M8-35	300
GN 134-V30-V30-60-1-*	-	V30	-	V30	60	M8	109	79	50	GN 911-M8-55	660
GN 134-V35-V35-60-1-*	-	V35	-	V35	60	M8	109	79	50	GN 911-M8-55	620
GN 134-V40-V40-60-1-*	-	V40	-	V40	60	M8	109	79	50	GN 911-M8-55	560
GN 134-V40-V40-76-1-*	-	V40	-	V40	76	M10	125	98	55	GN 911-M10-63	945
GN 134-V45-V45-76-1-*	-	V45	-	V45	76	M10	125	98	55	GN 911-M10-63	895
GN 134-V50-V50-76-1-*	-	V50	-	V50	76	M10	125	98	55	GN 911-M10-63	825
GN 134-V20-B20-50-1-*	-	V20	B20	-	50	M8	79.5	68	33.5	GN 911-M8-35	350
GN 134-V25-B25-50-1-*	-	V25	B25	-	50	M8	79.5	68	33.5	GN 911-M8-35	330
GN 134-V30-B30-50-1-*	-	V30	B30	-	50	M8	79.5	68	33.5	GN 911-M8-35	310
GN 134-V30-B30-60-1-*	-	V30	B30	-	60	M8	109	79	50	GN 911-M8-55	680
GN 134-V35-B35-60-1-*	-	V35	B35	-	60	M8	109	79	50	GN 911-M8-55	640
GN 134-V40-B40-60-1-*	-	V40	B40	-	60	M8	109	79	50	GN 911-M8-55	580
GN 134-V40-B40-76-1-*	-	V40	B40	-	76	M10	125	98	55	GN 911-M10-63	890
GN 134-V45-B45-76-1-*	-	V45	B45	-	76	M10	125	98	55	GN 911-M10-63	835
GN 134-V50-B50-76-1-*	-	V50	B50	-	76	M10	125	98	55	GN 911-M10-63	770

* Complete the description of the standard item needed by adding the finish of the connector clamps: BL (blank) or SW (black).

Standard Elements	Main dimensions									Clamping kits for d3	Δ
Description	d1	s1	d2	s2	k Clamping length	d3	l1	l2	m		g
GN 134-B20-B20-50-2-*	B20	-	B20	-	50	M8	79.5	68	33.5	GN 911-M8-35	355
GN 134-B25-B25-50-2-*	B25	-	B25	-	50	M8	79.5	68	33.5	GN 911-M8-35	330
GN 134-B30-B30-50-2-*	B30	-	B30	-	50	M8	79.5	68	33.5	GN 911-M8-35	320
GN 134-B30-B30-60-2-*	B30	-	B30	-	60	M8	109	79	50	GN 911-M8-55	700
GN 134-B32-B32-60-2-*	B32	-	B32	-	60	M8	109	79	50	GN 911-M8-55	690
GN 134-B35-B35-60-2-*	B35	-	B35	-	60	M8	109	79	50	GN 911-M8-55	680
GN 134-B40-B40-60-2-*	B40	-	B40	-	60	M8	109	79	50	GN 911-M8-55	620
GN 134-B40-B40-76-2-*	B40	-	B40	-	76	M10	125	98	55	GN 911-M10-63	890
GN 134-B42-B42-76-2-*	B42	-	B42	-	76	M10	125	98	55	GN 911-M10-63	945
GN 134-B45-B45-76-2-*	B45	-	B45	-	76	M10	125	98	55	GN 911-M10-63	915
GN 134-B48-B48-76-2-*	B48	-	B48	-	76	M10	125	98	55	GN 911-M10-63	915
GN 134-B50-B50-76-2-*	B50	-	B50	-	76	M10	125	98	55	GN 911-M10-63	885
GN 134-V20-V20-50-2-*	-	V20	-	V20	50	M8	79.5	68	33.5	GN 911-M8-35	350
GN 134-V25-V25-50-2-*	-	V25	-	V25	50	M8	79.5	68	33.5	GN 911-M8-35	325
GN 134-V30-V30-50-2-*	-	V30	-	V30	50	M8	79.5	68	33.5	GN 911-M8-35	300
GN 134-V30-V30-60-2-*	-	V30	-	V30	60	M8	109	79	50	GN 911-M8-55	660
GN 134-V35-V35-60-2-*	-	V35	-	V35	60	M8	109	79	50	GN 911-M8-55	620
GN 134-V40-V40-60-2-*	-	V40	-	V40	60	M8	109	79	50	GN 911-M8-55	560
GN 134-V40-V40-76-2-*	-	V40	-	V40	76	M10	125	98	55	GN 911-M10-63	945
GN 134-V45-V45-76-2-*	-	V45	-	V45	76	M10	125	98	55	GN 911-M10-63	825
GN 134-V50-V50-76-2-*	-	V50	-	V50	76	M10	125	98	55	GN 911-M10-63	825
GN 134-V20-B20-50-2-*	-	V20	B20	-	50	M8	79.5	68	33.5	GN 911-M8-35	350
GN 134-V25-B25-50-2-*	-	V25	B25	-	50	M8	79.5	68	33.5	GN 911-M8-35	330
GN 134-V30-B30-50-2-*	-	V30	B30	-	50	M8	79.5	68	33.5	GN 911-M8-35	310
GN 134-V30-B30-60-2-*	-	V30	B30	-	60	M8	109	79	50	GN 911-M8-55	680
GN 134-V35-B35-60-2-*	-	V35	B35	-	60	M8	109	79	50	GN 911-M8-55	640
GN 134-V40-B40-60-2-*	-	V40	B40	-	60	M8	109	79	50	GN 911-M8-55	580
GN 134-V40-B40-76-2-*	-	V40	B40	-	76	M10	125	98	55	GN 911-M10-63	890
GN 134-V45-B45-76-2-*	-	V45	B45	-	76	M10	125	98	55	GN 911-M10-63	835
GN 134-V50-B50-76-2-*	-	V50	B50	-	76	M10	125	98	55	GN 911-M10-63	840

* Complete the description of the standard item needed by adding the finish of the connector clamps: BL (blank) or SW (black).