

GN 508.1

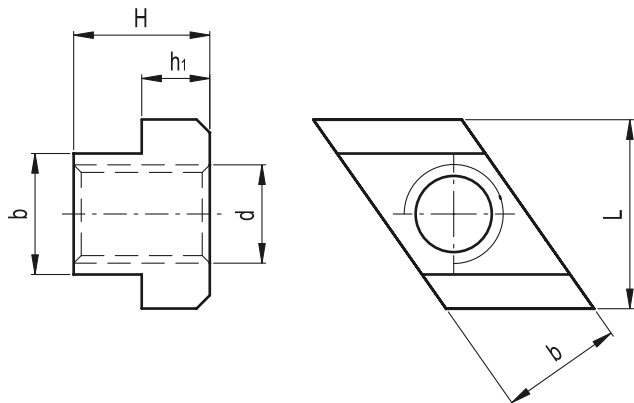
Rhombus T-Nuts

• Material

Black-oxide steel, class 10 (tensile strength 1000 N/mm²).

Features

GN 508.1 rhombus T-nuts can be inserted vertically into T-slots.



Standard Elements	Main dimensions						T-Nuts DIN 650	△ g
Description	^{-0.3} b-0.5	L -0.5	H	d	h1 -0.5			
GN 508.1-8-M6	8	13	10	M6	6	8	5	
GN 508.1-10-M8	10	15	12	M8	6	10	9	
GN 508.1-12-M10	12	18	14	M10	7	12	13	
GN 508.1-14-M12	14	22	16	M12	8	14	23	
GN 508.1-16-M14	16	25	18	M14	9	16	32	
GN 508.1-18-M16	18	28	20	M16	10	18	44	
GN 508.1-22-M20	22	35	28	M20	14	22	97	

GN 508.2

T-Nuts

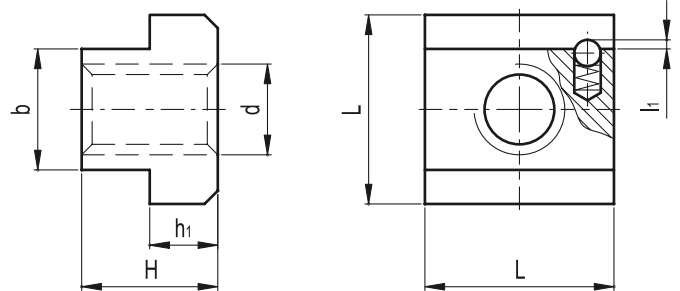
• Material

- Execution **8**: zinc plated hardened steel, class 8 (tensile strength 800 N/mm²).
- Execution **10**: black oxide hardened steel, class 10 (tensile strength 1000 N/mm²).

Features and applications

T-nuts GN 508.2 are dimensionally identical to DIN 508.

They are, however, fitted on the side with a spring loaded ball. This will prevent an unwanted movement of the nut, especially in a vertically mounted T-slot bed.



Standard Elements	Main dimensions						T-Nuts DIN 650	△ g
Description	^{-0.3} b-0.5	d	H	L	h1	l1		
GN 508.2-10-M8-8	10	M8	12	15	6	0.65	10	14
GN 508.2-10-M8-10	10	M8	12	15	6	0.65	10	14
GN 508.2-12-M10-8	12	M10	14	18	7	0.65	12	22
GN 508.2-12-M10-10	12	M10	14	18	7	0.65	12	22
GN 508.2-14-M12-8	14	M12	16	22	8	1	14	34
GN 508.2-14-M12-10	14	M12	16	22	8	1	14	34
GN 508.2-18-M16-8	18	M16	20	28	10	1	18	68
GN 508.2-18-M16-10	18	M16	20	28	10	1	18	68
GN 508.2-22-M20-8	22	M20	28	35	14	1.6	22	155
GN 508.2-22-M20-10	22	M20	28	35	14	1.6	22	155