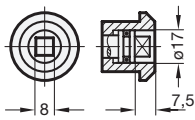
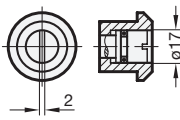


**1 Type**

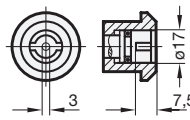
- VK8** Operation with square spindle A/F8
- SCH** Operation with slot
- VDE** Operation with double bit (VDE5)
- RG** Operation with knurled knob GN 7336
- KG** Operation with wrench
- HG** Operation with lever



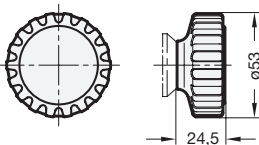
Type **VK8**



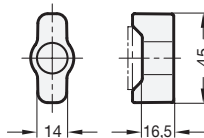
Type **SCH**



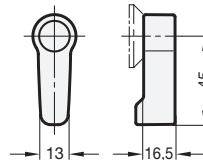
Type **VDE**



Type **RG**



Type **KG**



Type **HG**

**2**

Latch distance <b>A</b>								
19	23	27	31	33	35	37	39	41

**Specification**

- Stainless Steel
  - Housing 1.4401
  - Locking mechanism 1.4401
  - Bolt 1.4401
  - Latch 1.4301
- all handles (Type RG / KG / HG)
  - Plastic (Polyamide PA)
  - black, matt
  - Cover cap light grey matt
- Protection class: IP 65
- **RoHS compliant**

**Accessory**

- Key GN 119.2

**Information**

The Stainless Steel-rotary clamping latches GN 516.5 have a closing mechanism which transfers the rotary movement of the operating element / key into a 90° turn and then into a 6 mm linear stroke.

This mechanism is designed for common applications such as making a tight and vibration-proof interlock in the end position (retaining position) in connection with an elastic element (door / casing seal).

9 latches with different cranks will cover latch distances (retaining zones) of between 19 and 41 mm. If the measured retaining position lies between two latch distances A, the next smaller value must be selected.

The rotary clamping latches GN 516.5 are supplied with the latch enclosed loose.

see also...

- *Technical and assembly instructions*
- *Rotary clamping latches GN 516 (Zinc die casting)*

**How to order**

**GN516.5-VK8-19**

**1 Type**

**2 Latch distance A**