

GN 771.1

Guide pins

RoHS

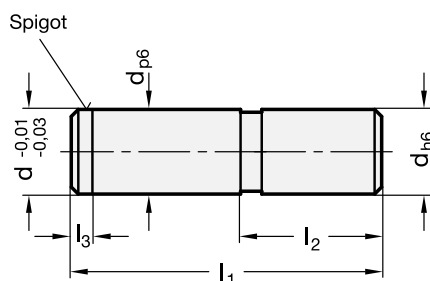
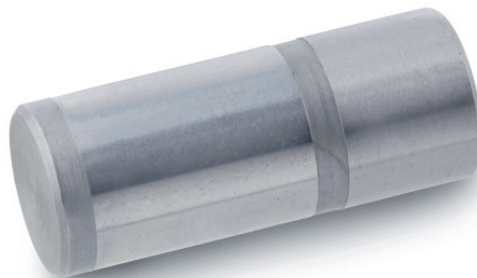
• Material

Hardened steel (HRC 60 ± 2), fit sizes ground.

Features and applications

Guide pins GN 771.1 are normally used in combination with DIN 172 (see page 395) / DIN 179 (see page 398) guide bushes.

The shaft tolerance p6 guarantees a perfect pressfit in a mounting borehole H7; the attachment lug l₃ makes the installation easier.



Standard Elements	Main dimensions				$\Delta \pm$
Description	d p6/h6	l ₁	l ₂	l ₃	g
GN 771.1-4-16-8	4	16	8	1.5	2
GN 771.1-5-18-8	5	18	8	1.5	3
GN 771.1-6-22-10	6	22	10	1.5	10
GN 771.1-8-24-10	8	24	10	2	15
GN 771.1-10-28-12	10	28	12	2	20
GN 771.1-12-30-12	12	30	12	2.5	26
GN 771.1-16-36-16	16	36	16	2.5	32