

GN 705-ZB

Positioning rings (screw assembly)



- Material**

Zinc plated steel **ZB**.

- Assembly**

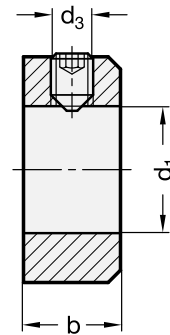
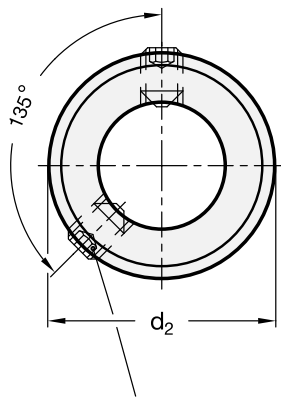
Type **E**: grub screw with hexagon socket, ISO 4027 (DIN 914).

Rings with $d_1 = 80$ mm are provided with two grub screws.

Features and applications

Semi-split set collars GN 706.2 can safely and simply be assembled i.e. with high clamping force without damaging the surface of the shaft.

These set collars not only serve as an end stop, but they can also be used for fixing or triggering other components such as end limit switches.



Second grub screw for size $d_1 = 80$

Standard Elements	Main dimensions				\triangle/\triangle
Description	d_1 H8	d_2	d_3	b js14	g
GN 705-5-E-ZB	5	10	M3x4	6	3
GN 705-6-E-ZB	6	12	M4x5	8	6
GN 705-7-E-ZB	7	12	M4x5	8	5
GN 705-8-E-ZB	8	16	M4x6	8	10
GN 705-9-E-ZB	9	18	M5x8	10	15
GN 705-10-E-ZB	10	20	M5x8	10	19
GN 705-11-E-ZB	11	20	M5x8	10	18
GN 705-12-E-ZB	12	22	M6x8	12	26
GN 705-13-E-ZB	13	22	M6x8	12	26
GN 705-14-E-ZB	14	25	M6x8	12	32
GN 705-15-E-ZB	15	25	M6x8	12	30
GN 705-16-E-ZB	16	28	M6x8	12	39
GN 705-18-E-ZB	18	32	M6x8	14	60
GN 705-20-E-ZB	20	32	M6x8	14	53
GN 705-22-E-ZB	22	36	M6x10	14	69
GN 705-24-E-ZB	24	40	M8x10	16	80
GN 705-25-E-ZB	25	40	M8x10	16	96
GN 705-26-E-ZB	26	40	M8x10	16	91
GN 705-28-E-ZB	28	45	M8x12	16	123
GN 705-30-E-ZB	30	45	M8x10	16	130
GN 705-32-E-ZB	32	50	M8x12	16	145
GN 705-35-E-ZB	35	56	M8x12	16	187
GN 705-40-E-ZB	40	63	M10x16	18	261
GN 705-45-E-ZB	45	70	M10x16	18	317
GN 705-50-E-ZB	50	80	M10x16	18	429
GN 705-60-E-ZB	60	90	M10x16	20	552
GN 705-70-E-ZB	70	100	M10x20	20	626
GN 705-80-E-ZB	80	110	M12x20	22	768