

Washers

RoHS

Material

AISI 303 stainless steel **NI**, turned.

Finish

Matte blasted, **MT**.

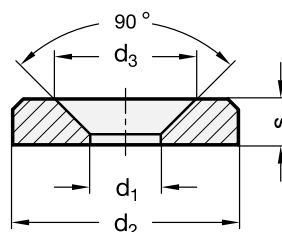
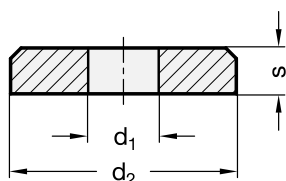
Standard versions available

- Type **A**: with cylindrical bore.

- Type **B**: with bore for countersunk screw.

Features and applications

Washers GN 6341 are used mainly in mechanical machine and jig construction when DIN 125, DIN 9021 and DIN 6340 washers no longer meet requirements.



Standard Elements	Main dimensions				\triangle/\triangle
Description	$d_1^{+0.5/+0.2}$	d_2	d_3	s	g
GN 6341-NI-4-10-A-MT	4	10	-	2.5	6
GN 6341-NI-4-10-B-MT	4	10	8.4	2.5	8
GN 6341-NI-4-13-A-MT	4	13	-	2.5	3
GN 6341-NI-4-13-B-MT	4	13	8.4	2.5	3
GN 6341-NI-5-13-A-MT	5	13	-	3	8
GN 6341-NI-5-13-B-MT	5	13	10.5	3	8
GN 6341-NI-5-16-A-MT	5	16	-	3	4
GN 6341-NI-5-16-B-MT	5	16	10.5	3	4
GN 6341-NI-6-15-A-MT	6	15	-	4	4
GN 6341-NI-6-15-B-MT	6	15	12.6	4	4
GN 6341-NI-6-20-A-MT	6	20	-	4	8
GN 6341-NI-6-20-B-MT	6	20	12.6	4	8
GN 6341-NI-8-20-A-MT	8	20	-	5	9
GN 6341-NI-8-20-B-MT	8	20	16.8	5	9
GN 6341-NI-8-26-A-MT	8	26	-	5	18
GN 6341-NI-8-26-B-MT	8	26	16.8	5	18
GN 6341-NI-10-25-A-MT	10	25	-	6.5	20
GN 6341-NI-10-25-B-MT	10	25	21	6.5	20
GN 6341-NI-10-32-A-MT	10	32	-	6.5	30
GN 6341-NI-10-32-B-MT	10	32	21	6.5	30
GN 6341-NI-12-30-A-MT	12	30	-	7.5	35
GN 6341-NI-12-30-B-MT	12	30	25.2	7.5	35
GN 6341-NI-12-40-A-MT	12	40	-	7.5	60
GN 6341-NI-12-40-B-MT	12	40	25.2	7.5	60