

GN 6341

Washers



Material

Steel **ST**, turned.

Finish

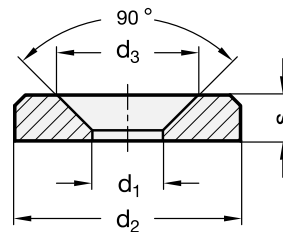
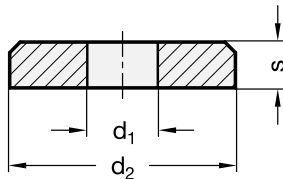
- Version **BT**: black-oxide.
- Version **ZB**: zinc-plated, blue passivated.

Standard version available

- Type **A**: with cylindrical bore.
- Type **B**: with bore for countersunk screw.

Features and applications

Washers GN 6341 are used mainly in mechanical machine and jig construction when DIN 125, DIN 9021 and DIN 6340 washers no longer meet requirements.



9

376

Machine elements

Standard Elements	Main dimensions				Δ
Description	$d_1^{+0.5/+0.2}$	d_2	d_3	s	g
GN 6341-ST-4-10-A-*	4	10	-	2.5	2
GN 6341-ST-4-10-B-*	4	10	8.4	2.5	9
GN 6341-ST-4-13-A-*	4	10	-	2.5	3
GN 6341-ST-4-13-B-*	4	13	8.4	2.5	2
GN 6341-ST-5-13-A-*	5	13	-	3	3
GN 6341-ST-5-13-B-*	5	13	10.5	3	2
GN 6341-ST-5-16-A-*	5	16	-	3	2
GN 6341-ST-5-16-B-*	5	16	10.5	3	5
GN 6341-ST-6-15-A-*	6	15	-	4	4
GN 6341-ST-6-15-B-*	6	15	12.6	4	4
GN 6341-ST-6-20-A-*	6	20	-	4	9
GN 6341-ST-6-20-B-*	6	20	12.6	4	8
GN 6341-ST-8-20-A-*	8	20	-	5	9
GN 6341-ST-8-20-B-*	8	20	16.8	5	7
GN 6341-ST-8-26-A-*	8	26	-	5	18
GN 6341-ST-8-26-B-*	8	26	16.8	5	16
GN 6341-ST-10-25-A-*	10	25	-	6.5	20
GN 6341-ST-10-25-B-*	10	25	21	6.5	25
GN 6341-ST-10-32-A-*	10	32	-	6.5	40
GN 6341-ST-10-32-B-*	10	32	21	6.5	30
GN 6341-ST-12-30-A-*	12	30	-	7.5	34
GN 6341-ST-12-30-B-*	12	30	25.2	7.5	25
GN 6341-ST-12-40-A-*	12	40	-	7.5	65
GN 6341-ST-12-40-B-*	12	40	25.2	7.5	60

* Complete the description of the standard item needed by adding the index of the finish: BT (black-oxide) or ZB (zinc-plated, blue passivated).