

Spherical washers combinations

RoHS

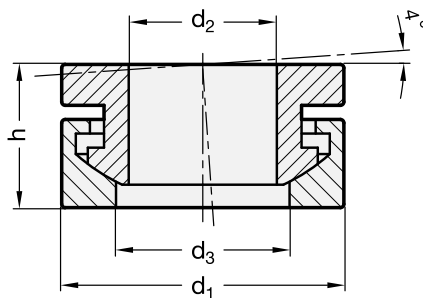
- **Material**

AISI 303 stainless steel **NI**.

Features and applications

Spherical washers combinations GN 6319.1-NI provide an "und detachable" connection for male and female spherical washers GN 6319.

They simply storage and allow fast and efficient installation.



Standard Elements	Main dimensions					Static load F in kN	⚖ g
Description	d ₁	d ₂	d ₃	h	for screw		
GN 6319.1-13-NI	13	6.4	7.4	7	M6	#	10
GN 6319.1-17-NI	17	8.4	9.7	8.5	M8	#	19
GN 6319.1-21-NI	21	10.5	12	10.5	M10	#	20
GN 6319.1-25-NI	25	13	14.8	13	M12	#	25
GN 6319.1-32-NI	32	17	19.7	17	M16	#	60
GN 6319.1-40-NI	40	21	24.6	20.3	M20	#	80

Values for static load F in kN on request.