

GN 588

Thread adapters



Material

Zinc-plated steel C35, blue passivated.

Features

GN 588 thread adapters are used if high strength GN 581 eye bolts or GN 586 rotating lifting eye bolts are to be used for tap holes designed for inserting DIN 580 eye bolts.

The load-bearing capacity of GN 586 rotating lifting bolts is such that a carrying element with a smaller thread is sufficient, which is normally a more cost effective option.

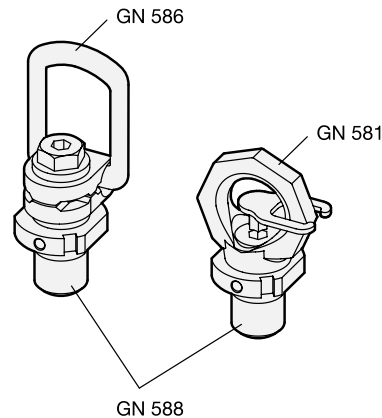
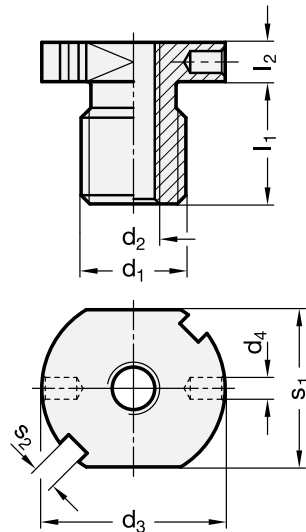
The head version allows the installation with fork or hook key, and with a pin. C-Spanners have to be ordered separately.

Accessories

C-Spanners DIN 1810 (code no. see table).

Application and assembly information

- The contact surface must be plane and at a right angle to the threaded taphole.
- In the screwed-in state, the screw collar must make firm contact.
- Minimum screw-in length 1,2 x rated thread diameter in steel. When used in other materials, the load-bearing capacity drops.
- Operating instructions with more details and specifications are enclosed with every delivery.



Standard Elements	Main dimensions								C-Spanner	Δ
Description	d1	d2	d3	d4	l1	l2	s1	s2		g
GN 588-M16-M8	M16	M8	35	5	20	8	30	6	DIN 1810-A34-36	60
GN 588-M20-M10	M20	M10	38	5	24	9	32	6	DIN 1810-A34-36	100
GN 588-M24-M12	M24	M12	42	5	28	9	36	6	DIN 1810-A40-42	140
GN 588-M30-M16	M30	M16	51	6	36	10	46	7	DIN 1810-A52-55	290
GN 588-M36-M20	M36	M20	65	6	43	12	55	8	DIN 1810-A58-62	400