

GN 409.2

Positioning elements

RoHS

Material

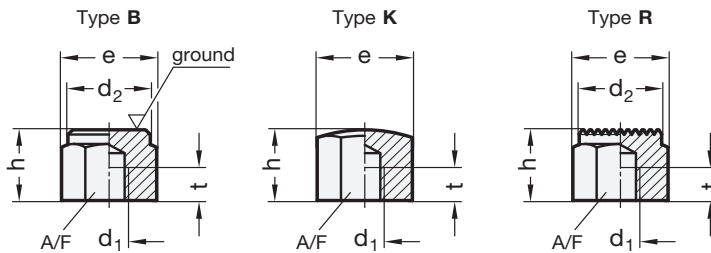
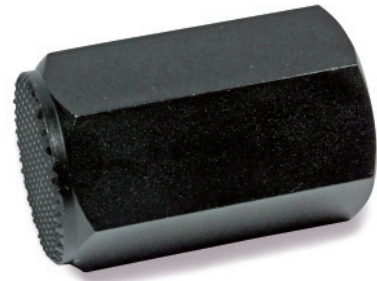
Black-oxide, hardened steel.

Standard versions available

- Type **B**: smooth contact face.
- Type **K**: spherical contact face.
- Type **R**: serrated contact face.

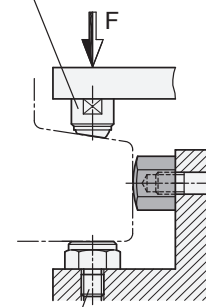
Features and applications

Positioning elements GN 409.2 with female thread are designed for use as locating plungers, stops and thrust blocks.



Application example

Clamping pad GN 709.1



Positioning element
GN 409.1

Standard Elements	Main dimensions				Bore		Δ
Description	$h_{\pm 0.01}$	d_2	A/F	e	d_1	f min.	g
GN 409.2-15-M8-B	15	17	17	19.4	M8	6	25
GN 409.2-20-M10-B	20	19	19	21.9	M10	10	39
GN 409.2-20-M12-B	20	22	22	25.2	M12	10	52
GN 409.2-25-M8-B	25	17	17	19.4	M8	12	42
GN 409.2-25-M12-B	25	22	22	25.2	M12	15	55
GN 409.2-30-M10-B	30	19	19	21.9	M10	15	61
GN 409.2-30-M12-B	30	22	22	25.2	M12	18	79
GN 409.2-30-M16-B	30	30	30	33	M16	20	82
GN 409.2-40-M10-B	40	19	19	21.9	M10	15	85
GN 409.2-40-M12-B	40	22	22	25.2	M12	18	110
GN 409.2-50-M12-B	50	22	22	25.2	M12	18	142
GN 409.2-50-M16-B	50	30	30	33	M16	24	270
GN 409.2-15-M8-K	15	-	17	19.4	M8	6	24
GN 409.2-20-M10-K	20	-	17	21.9	M10	10	38
GN 409.2-20-M12-K	20	-	22	25.2	M12	10	50
GN 409.2-25-M8-K	25	-	17	19.4	M8	12	41
GN 409.2-25-M12-K	25	-	22	25.2	M12	15	65
GN 409.2-30-M10-K	30	-	19	21.9	M10	15	61
GN 409.2-30-M12-K	30	-	22	25.2	M12	18	79
GN 409.2-30-M16-K	30	-	30	33	M16	20	82
GN 409.2-40-M10-K	40	-	19	21.9	M10	15	85
GN 409.2-40-M12-K	40	-	22	25.2	M12	18	110
GN 409.2-50-M12-K	50	-	22	25.2	M12	18	141
GN 409.2-50-M16-K	50	-	30	33	M16	24	250
GN 409.2-15-M8-R	15	17	17	19.4	M8	6	24
GN 409.2-20-M10-R	20	19	19	21.9	M10	10	38
GN 409.2-20-M12-R	20	22	22	25.2	M12	10	50
GN 409.2-25-M8-R	25	17	17	19.4	M8	12	41
GN 409.2-25-M12-R	25	22	22	25.2	M12	15	63
GN 409.2-30-M10-R	30	19	19	21.9	M10	15	60
GN 409.2-30-M12-R	30	22	22	25.2	M12	18	77
GN 409.2-30-M16-R	30	30	30	33	M16	20	80
GN 409.2-40-M10-R	40	19	19	21.9	M10	15	84
GN 409.2-40-M12-R	40	22	22	25.2	M12	18	109
GN 409.2-50-M12-R	50	22	22	25.2	M12	18	141
GN 409.2-50-M16-R	50	30	30	33	M16	24	253