

## Levelling washers



### Material

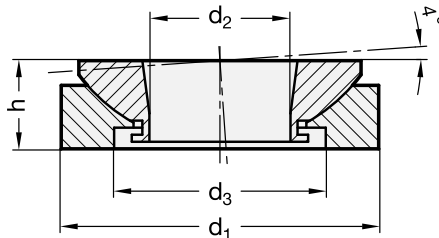
- Version **ST**: zinc-plated steel.
- Version **NI**: AISI 303 stainless steel.

### Applications

GN 350.3 levelling washers are suitable for locking mechanical parts on non-parallel surfaces.

The coupling of the spherical surfaces of the two "non-dismountable" washers allows a high load resistance.

AISI 316 stainless steel, thanks to its high resistance to corrosion, allows the application of these washers on machines and equipment in those sectors where laws or particular hygienic, climatic and environmental factors make it mandatory to use corrosion resistant materials.



| Standard Elements | Main dimensions |      |    |      | Max. screw dimension | Static load in N | <br>g |
|-------------------|-----------------|------|----|------|----------------------|------------------|-------|
|                   | Description     | d1-1 | d1 | d3   |                      |                  |       |
| GN 350.3-25-ST    | 25              | 8.5  | 15 | 8    | M6                   | 40               | 22    |
| GN 350.3-32-ST    | 32              | 13   | 20 | 10   | M10                  | 65               | 44    |
| GN 350.3-45-ST    | 45              | 20   | 30 | 12.5 | M16                  | 120              | 104   |
| GN 350.3-58-ST    | 58              | 29   | 38 | 16   | M24                  | 210              | 215   |
| GN 350.3-70-ST    | 70              | 36   | 48 | 20   | M30                  | 330              | 372   |
| GN 350.3-80-ST    | 80              | 44   | 61 | 20   | M36                  | 495              | 427   |
| GN 350.3-105-ST   | 105             | 58   | 78 | 25   | M48                  | 920              | 430   |
| GN 350.3-25-NI    | 25              | 8.5  | 15 | 8    | M6                   | 27.1             | 22    |
| GN 350.3-32-NI    | 32              | 13   | 20 | 10   | M10                  | 43.4             | 44    |
| GN 350.3-45-NI    | 45              | 20   | 30 | 12.5 | M16                  | 84               | 104   |
| GN 350.3-58-NI    | 58              | 29   | 38 | 16   | M24                  | 148              | 215   |
| GN 350.3-70-NI    | 70              | 36   | 48 | 20   | M30                  | 225              | 372   |
| GN 350.3-80-NI    | 80              | 44   | 61 | 20   | M36                  | 323              | 427   |
| GN 350.3-105-NI   | 105             | 58   | 78 | 25   | M48                  | 546              | 430   |