

GN 350.2

EXTENDED RANGE

Levelling sets



Material

Zinc-plated steel ST.

F1: max. total load.

F2: max. load after deduction of the max. preload for screws 8.8, $\mu = 0,125$.

Features and applications

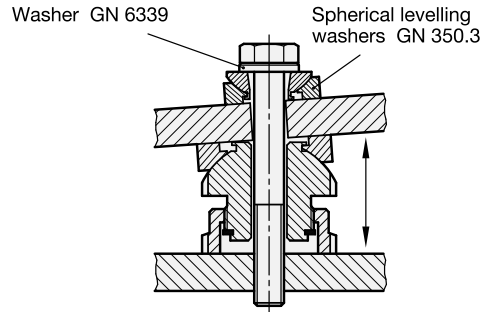
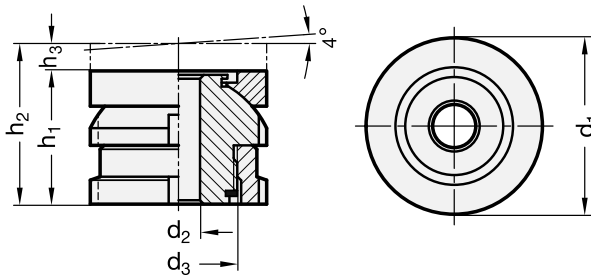
Levelling sets GN 350.2 are used for levelling, adjusting and linking operations.

The spherical washer allows precise installation of two non parallel planes at a required gradient up to $\approx 4^\circ$.

They comprise a threaded upper sleeve and a female threaded lower sleeve. The fine thread allows a stepless and precise setting and locking using the C-Spanner DIN 1810. An anti-rotation disc serves as a height limiter for the max. height.

Accessories on request

C-Spanner DIN 1810 (code no. see table).



9

378

Machine elements

Standard Elements	Main dimensions						for thread	Static Load		C-Spanner	Δ g
	Description	d1	d2	h1	d3	h2		h3	Max. load F1 in kN		
GN 350.2-25-5.5-22-ST	25	5.5	22	M15x1	26	4	M5	40	33.4	DIN 1810-A25-28	70
GN 350.2-25-5.5-35-ST	25	5.5	35	M15x1	50	15	M5	40	33.4	DIN 1810-A25-28	90
GN 350.2-25-6.6-22-ST	25	6.6	22	M15x1	26	4	M6	40	30.7	DIN 1810-A25-28	67
GN 350.2-25-6.6-35-ST	25	6.6	35	M15x1	50	15	M6	40	30.7	DIN 1810-A25-28	100
GN 350.2-32-6.6-26-ST	32	6.6	26	M20x1	31	5	M6	65	55.7	DIN 1810-A30-32	132
GN 350.2-32-6.6-43-ST	32	6.6	43	M20x1	63	20	M6	65	55.7	DIN 1810-A30-32	212
GN 350.2-32-9-26-ST	32	9	26	M20x1	31	5	M8	65	48	DIN 1810-A30-32	131
GN 350.2-32-9-43-ST	32	9	43	M20x1	63	20	M8	65	48	DIN 1810-A30-32	201
GN 350.2-32-11-26-ST	32	11	26	M20x1	31	5	M10	65	37.9	DIN 1810-A30-32	120
GN 350.2-32-11-43-ST	32	11	43	M20x1	63	20	M10	65	37.9	DIN 1810-A30-32	191
GN 350.2-45-11-34-ST	45	11	34	M30x1.5	41	7	M10	120	92.9	DIN 1810-A45-50	355
GN 350.2-45-11-54-ST	45	11	54	M30x1.5	79	25	M10	120	92.9	DIN 1810-A45-50	555
GN 350.2-45-13.5-34-ST	45	13.5	34	M30x1.5	41	7	M12	120	80.4	DIN 1810-A45-50	307
GN 350.2-45-13.5-54-ST	45	13.5	54	M30x1.5	79	25	M12	120	80.4	DIN 1810-A45-50	539
GN 350.2-45-17.5-34-ST	45	17.5	34	M30x1.5	41	7	M16	120	45.5	DIN 1810-A45-50	280
GN 350.2-45-17.5-54-ST	45	17.5	54	M30x1.5	79	25	M16	120	45.5	DIN 1810-A45-50	510
GN 350.2-58-17.5-44-ST	58	17.5	44	M40x1.5	53	9	M16	210	136	DIN 1810-A58-62	665
GN 350.2-58-17.5-70-ST	58	17.5	70	M40x1.5	102	32	M16	210	136	DIN 1810-A58-62	1092
GN 350.2-58-22-44-ST	58	22	44	M40x1.5	53	9	M20	210	90	DIN 1810-A58-62	650
GN 350.2-58-22-70-ST	58	22	70	M40x1.5	102	32	M20	210	90	DIN 1810-A58-62	1031
GN 350.2-58-26-44-ST	58	26	44	M40x1.5	53	9	M24	210	37	DIN 1810-A58-62	560
GN 350.2-58-26-70-ST	58	26	70	M40x1.5	102	32	M24	210	37	DIN 1810-A58-62	955
GN 350.2-70-22-50-ST	70	22	50	M50x1.5	60	10	M20	330	210	DIN 1810-A68-75	1200
GN 350.2-70-22-83-ST	70	22	83	M50x1.5	123	40	M20	330	210	DIN 1810-A68-75	1896
GN 350.2-70-26-50-ST	70	26	50	M50x1.5	60	10	M24	330	157	DIN 1810-A68-75	940
GN 350.2-70-26-83-ST	70	26	83	M50x1.5	123	40	M24	330	157	DIN 1810-A68-75	1802
GN 350.2-70-33-50-ST	70	33	50	M50x1.5	60	10	M30	330	53	DIN 1810-A68-75	815
GN 350.2-70-33-83-ST	70	33	83	M50x1.5	123	40	M30	330	53	DIN 1810-A68-75	1599
GN 350.2-80-26-56-ST	80	26	56	M60x2	68	12	M24	495	322	DIN 1810-A80-90	1280
GN 350.2-80-26-94-ST	80	26	94	M60x2	144	50	M24	495	322	DIN 1810-A80-90	2885
GN 350.2-80-33-56-ST	80	33	56	M60x2	68	12	M30	495	218	DIN 1810-A80-90	1000
GN 350.2-80-33-94-ST	80	33	94	M60x2	144	50	M30	495	218	DIN 1810-A80-90	2663
GN 350.2-80-39-56-ST	80	39	56	M60x2	68	12	M36	495	101	DIN 1810-A80-90	860
GN 350.2-80-39-94-ST	80	39	94	M60x2	144	50	M36	495	101	DIN 1810-A80-90	2232