

GN 722.1

Spring latches

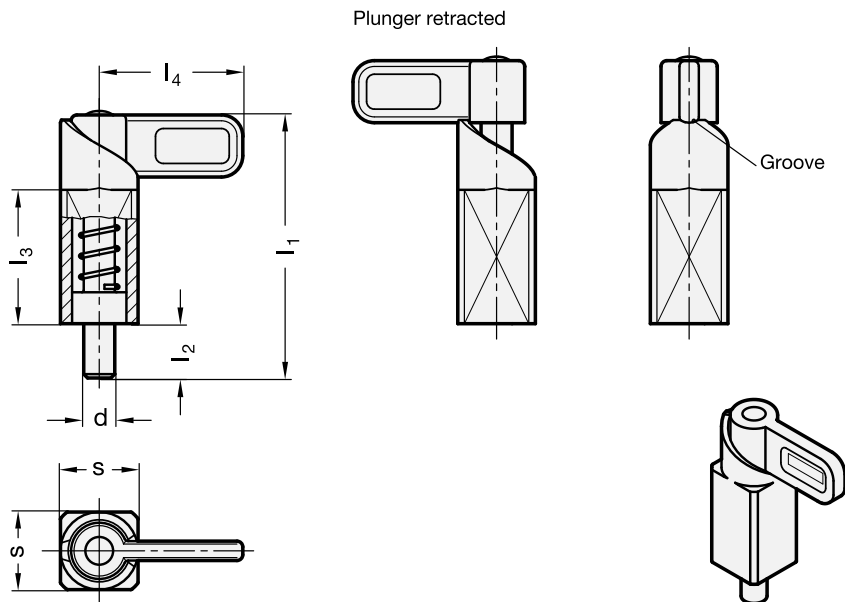
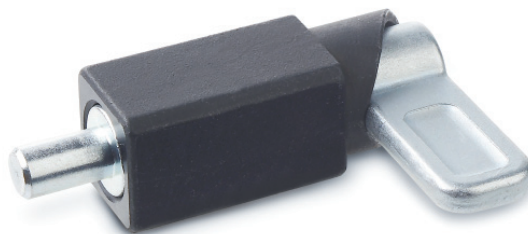
RoHS

- **Guide**
Black-oxide steel precision cast, weldable.
- **Latch**
Steel precision cast, zinc plated, blue passivated.
- **Plunger**
Steel, zinc plated, blue passivated.
Suggested matching hole with tolerance +0.1/+0.3.

Features and applications

Spring latches GN 722.1 are used when the indexing pin is temporarily not allowed to protrude. The indexing pin retracts by turning the latch by 180°. A lock notch will hold the latch in both positions.

The square bar allows the latch to be welded in any desired position. To prevent excessive heating up and the resulting change in the spring properties, fixing with welding spots is recommended. Spring latches GN 722.1 are designed for use in steel construction or in locksmith shops where less precise positioning / locking is normally required. The dimensional tolerances are therefore chosen to ensure that functional safety is guaranteed under dirt exposure and that cost-effective production methods are used.



Standard Elements	Main dimensions						Spring pressure in N ≈		⚖ g
	$d \begin{smallmatrix} -0.05 \\ -0.25 \end{smallmatrix}$	s	$l_1 \approx$	l_2	l_3	l_4	Preload	Max. load	
GN 722.1-8-20	8	20	68	14	35	37	16	55	120
GN 722.1-10-20	10	20	68	14	35	37	16	55	140
GN 722.1-12-20	12	20	68	14	35	37	16	55	145
GN 722.1-14-20	14	20	68	14	35	37	16	55	140