

Distance bushings

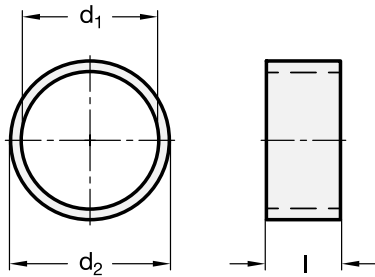


• **Material**

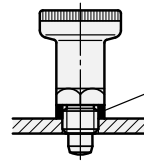
AISI 303 stainless steel.

Features and applications

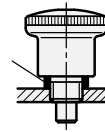
Distance bushings GN 609.5 compensate for the body thread lengths on the indexing plungers to allow mounting through walls of varying thickness.



Indexing plunger
GN 607 / GN 607.1

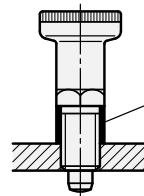


Indexing plunger
GN 822

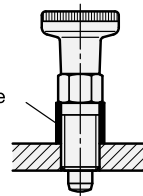


Distance
bushing

Indexing plunger
GN 617 / GN 617.1
GN 817



Indexing plunger
GN 717



Distance
bushing

Standard Elements	Main dimensions			for indexing plungers														g			
	d1 H12	d2 -0.1	l ±0.1	thread-Ø	GN 414	GN 514	GN 607	GN 607.1	GN 617	GN 617.1	GN 617.2	GN 717	GN 816	GN 816.1	GN 817	GN 817.2	GN 817.4		GN 822	GN 7336.8	
GN 609.5-6-7-2	6	7	2	M6	-	-	-	-	-	-	-	X	-	-	-	-	-	-	-	-	1
GN 609.5-6-7-4	6	7	4	M6	-	-	-	-	-	-	-	X	-	-	-	-	-	-	-	-	1
GN 609.5-6-7-6	6	7	6	M6	-	-	-	-	-	-	-	X	-	-	-	-	-	-	-	-	1
GN 609.5-6-7-8	6	7	8	M6	-	-	-	-	-	-	-	X	-	-	-	-	-	-	-	-	1
GN 609.5-8-10-2	8	10	2	M8	-	-	-	-	-	-	-	X	-	-	X	X	-	X	-	-	1
GN 609.5-8-10-4	8	10	4	M8	-	-	-	-	-	-	-	X	-	-	X	X	-	X	-	-	2
GN 609.5-8-10-6	8	10	6	M8	-	-	-	-	-	-	-	X	-	-	X	X	-	X	-	-	2
GN 609.5-8-10-8	8	10	8	M8	-	-	-	-	-	-	-	X	-	-	X	X	-	X	-	-	3
GN 609.5-8-10-10	8	10	10	M8	-	-	-	-	-	-	-	X	-	-	X	X	-	X	-	-	3
GN 609.5-10-12-2	10	12	2	M10	-	-	-	-	X	X	X	X	-	-	X	X	-	X	-	-	1
GN 609.5-10-12-4	10	12	4	M10	-	-	-	-	X	X	X	X	-	-	X	X	-	X	-	-	1
GN 609.5-10-12-6	10	12	6	M10	-	-	-	-	X	X	X	X	-	-	X	X	-	X	-	-	2
GN 609.5-10-12-8	10	12	8	M10	-	-	-	-	X	X	X	X	-	-	X	X	-	X	-	-	2
GN 609.5-10-12-10	10	12	10	M10	-	-	-	-	X	X	X	X	-	-	X	X	-	X	-	-	3
GN 609.5-10-12-12	10	12	12	M10	-	-	-	-	X	X	X	X	-	-	X	X	-	X	-	-	3
GN 609.5-12-14-2	12	14	2	M12	-	-	-	-	X	X	X	X	X	X	X	X	-	-	-	-	1
GN 609.5-12-14-4	12	14	4	M12	-	-	-	-	X	X	X	X	X	X	X	X	-	-	-	-	1
GN 609.5-12-14-6	12	14	6	M12	-	-	-	-	X	X	X	X	X	X	X	X	-	-	-	-	2
GN 609.5-12-14-8	12	14	8	M12	-	-	-	-	X	X	X	X	X	X	X	X	-	-	-	-	3
GN 609.5-12-14-10	12	14	10	M12	-	-	-	-	X	X	X	X	X	X	X	X	-	-	-	-	3
GN 609.5-12-14-12	12	14	12	M12	-	-	-	-	X	X	X	X	X	X	X	X	-	-	-	-	4
GN 609.5-12-14-14	12	14	14	M12	-	-	-	-	X	X	X	X	X	X	X	X	-	-	-	-	4
GN 609.5-12-17-2	12	17	2	M12	X	-	X	X	-	-	-	-	-	-	-	-	-	-	-	-	2
GN 609.5-12-17-4	12	17	4	M12	X	-	X	X	-	-	-	-	-	-	-	-	-	-	-	-	3
GN 609.5-12-17-6	12	17	6	M12	X	-	X	X	-	-	-	-	-	-	-	-	-	-	-	-	4
GN 609.5-12-17-8	12	17	8	M12	X	-	X	X	-	-	-	-	-	-	-	-	-	-	-	-	5
GN 609.5-12-17-10	12	17	10	M12	X	-	X	X	-	-	-	-	-	-	-	-	-	-	-	-	6
GN 609.5-12-17-12	12	17	12	M12	X	-	X	X	-	-	-	-	-	-	-	-	-	-	-	-	7
GN 609.5-16-17-2	16	17	2	M16	-	X	-	-	-	-	-	X	-	-	X	X	X	-	-	-	2
GN 609.5-16-17-4	16	17	4	M16	-	X	-	-	-	-	-	X	-	-	X	X	X	-	-	-	4
GN 609.5-16-17-6	16	17	6	M16	-	X	-	-	-	-	-	X	-	-	X	X	X	-	-	-	5
GN 609.5-16-17-8	16	17	8	M16	-	X	-	-	-	-	-	X	-	-	X	X	X	-	-	-	5
GN 609.5-16-17-10	16	17	10	M16	-	X	-	-	-	-	-	X	-	-	X	X	X	-	-	-	6
GN 609.5-16-17-12	16	17	12	M16	-	X	-	-	-	-	-	X	-	-	X	X	X	-	-	-	7
GN 609.5-16-19-2	16	19	2	M16	X	-	X	X	X	X	X	-	-	-	-	-	-	-	X	-	1
GN 609.5-16-19-4	16	19	4	M16	X	-	X	X	X	X	X	-	-	-	-	-	-	-	X	-	2
GN 609.5-16-19-6	16	19	6	M16	X	-	X	X	X	X	X	-	-	-	-	-	-	-	X	-	4
GN 609.5-16-19-8	16	19	8	M16	X	-	X	X	X	X	X	-	-	-	-	-	-	-	X	-	5
GN 609.5-16-19-10	16	19	10	M16	X	-	X	X	X	X	X	-	-	-	-	-	-	-	X	-	6
GN 609.5-16-19-12	16	19	12	M16	X	-	X	X	X	X	X	-	-	-	-	-	-	-	X	-	7
GN 609.5-20-22-6	22	20	6	M20	-	-	-	-	X	X	X	-	-	-	X	X	X	-	-	-	5
GN 609.5-20-22-8	20	22	8	M20	-	-	-	-	X	X	X	-	-	-	X	X	X	-	-	-	5
GN 609.5-20-22-10	20	22	10	M20	-	-	-	-	X	X	X	-	-	-	X	X	X	-	-	-	6
GN 609.5-20-22-12	20	22	12	M20	-	-	-	-	X	X	X	-	-	-	X	X	X	-	-	-	6
GN 609.5-20-22-14	20	22	14	M20	-	-	-	-	X	X	X	-	-	-	X	X	X	-	-	-	7
GN 609.5-20-22-16	20	22	16	M20	-	-	-	-	X	X	X	-	-	-	X	X	X	-	-	-	7
GN 609.5-20-22-18	20	22	18	M20	-	-	-	-	X	X	X	-	-	-	X	X	X	-	-	-	8