

Knurled nuts

RoHS

- **Material**

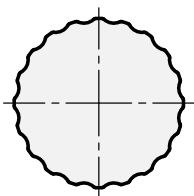
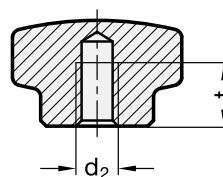
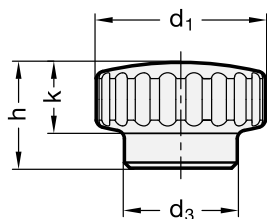
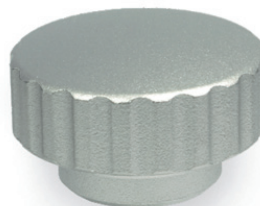
- AISI 304 stainless steel.
- Version **MT**: matt blasted.
- Version **PL**: polished.

- **Assembly**

- Tapped blind hole.

Features and applications

The knurling of the knurled nuts GN 536 allows a use in an environment with hygienic requirements.



Standard Elements	Main dimensions				Mounting hole		⚖
Description	d1	d3	h	k	d2	t min.	g
GN 536-20-M5-MT	20	14	13	8.5	M5	8	26
GN 536-20-M5-PL	20	14	13	8.5	M5	8	26
GN 536-24-M6-MT	24	16	15	10.5	M6	9	38
GN 536-24-M6-PL	24	16	15	10.5	M6	9	38
GN 536-28-M8-MT	28	18	17	12.5	M8	10	58
GN 536-28-M8-PL	28	18	17	12.5	M8	10	58