

## Knurled grip knobs

RoHS

- **Material**  
AISI 303 stainless steel, sandblasted matte finish.
- **Assembly**  
Hub, tapped through hole.

### Features and applications

AISI 303 stainless steel, thanks to its high resistance to corrosion, allows the application of these knobs on machines and equipment in those sectors where laws or particular hygienic, climatic and environmental factors make it mandatory to use corrosion resistant materials.

## Knurled grip knobs

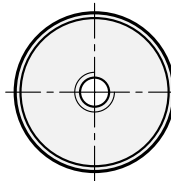
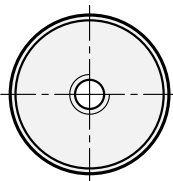
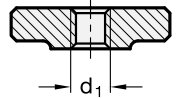
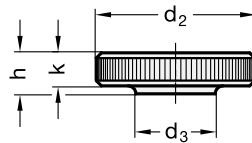
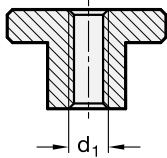
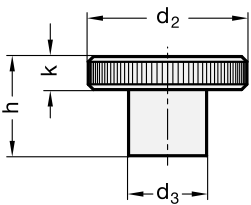
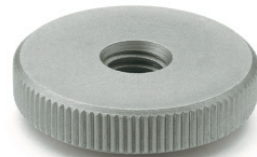
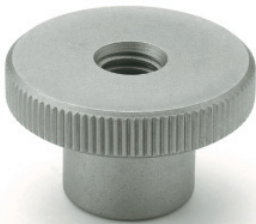
RoHS

- **Material**  
AISI 303 stainless steel, sandblasted matte finish.
- **Assembly**  
Tapped through hole.

### Features and applications

AISI 303 stainless steel, thanks to its high resistance to corrosion, allows the application of these knobs on machines and equipment in those sectors where laws or particular hygienic, climatic and environmental factors make it mandatory to use corrosion resistant materials.

EXTENDED RANGE



| Standard Elements  | Main dimensions      |          |                      |          | Mounting hole        | ⚖        |
|--------------------|----------------------|----------|----------------------|----------|----------------------|----------|
|                    | d <sub>2</sub>       | h        | d <sub>3</sub>       | k        |                      |          |
| <b>Description</b> | <b>d<sub>2</sub></b> | <b>h</b> | <b>d<sub>3</sub></b> | <b>k</b> | <b>d<sub>1</sub></b> | <b>g</b> |
| DIN 466-M4-NI      | 16                   | 9.5      | 8                    | 6        | M4                   | 7        |
| DIN 466-M5-NI      | 20                   | 11.5     | 10                   | 7.5      | M5                   | 13       |
| DIN 466-M6-NI      | 24                   | 15       | 12                   | 10       | M6                   | 23       |
| DIN 466-M8-NI      | 30                   | 18       | 16                   | 12       | M8                   | 44       |
| DIN 466-M10-NI     | 36                   | 23       | 20                   | 8        | M10                  | 84       |

| Standard Elements  | Main dimensions      |          |                      |          | Mounting hole        | ⚖        |
|--------------------|----------------------|----------|----------------------|----------|----------------------|----------|
|                    | d <sub>2</sub>       | h        | d <sub>3</sub>       | k        |                      |          |
| <b>Description</b> | <b>d<sub>2</sub></b> | <b>h</b> | <b>d<sub>3</sub></b> | <b>k</b> | <b>d<sub>1</sub></b> | <b>g</b> |
| DIN 467-M3-NI      | 12                   | 3        | 6                    | 2.5      | M3                   | 2        |
| DIN 467-M4-NI      | 16                   | 4        | 8                    | 3.5      | M4                   | 5        |
| DIN 467-M5-NI      | 20                   | 5        | 10                   | 4        | M5                   | 10       |
| DIN 467-M6-NI      | 24                   | 6        | 12                   | 5        | M6                   | 19       |
| DIN 467-M8-NI      | 30                   | 8        | 16                   | 6        | M8                   | 37       |
| DIN 467-M10-NI     | 36                   | 10       | 20                   | 8        | M10                  | 69       |