

Lobe knobs



Material

Glass-fibre reinforced polyamide based (PA) technopolymer. Resistant to solvents, oils, greases and other chemical agents.

Colour

Black, matte finish.

Closing cap

Polypropylene based (PP) technopolymer, RAL 2004 orange colour, glossy finish with matte central surface, snap-in mounting.

Standard executions

- **VTL-B**: brass boss, threaded blind hole.
- **VTL-p**: zinc-plated steel threaded stud, chamfered flat end according to UNI 947: ISO 4753 (see catalogue 038, page A11).

Special executions on request

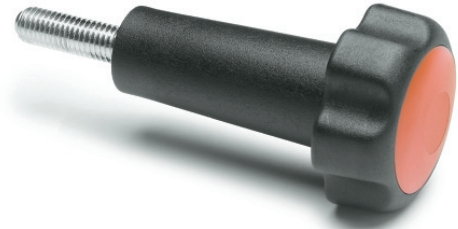
- On the surface of the closing cap words, marks, graphic symbols, etc... can be tampoprinted in colours.

Features and applications

The long cone-shaped body of this knob is especially designed to clamp elements placed at a distance from the operator or in difficult to access places



EXTENDED RANGE

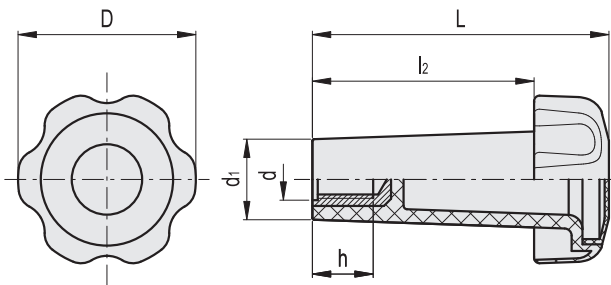


2

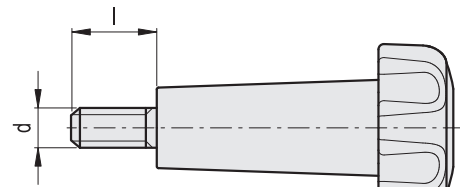
78

Clamping knobs

VTL-B



VTL-p



Standard Elements		Main dimensions				Threaded stud		⚖
Code	Description	D	L	d1	l2	d 6g	l	g
182222	VTL.50/80 B-M10-C2	50	82	22.5	62	M10	17	48
182223	VTL.50/80 B-M10-C9	50	82	22.5	62	M10	17	48
182232	VTL.50/80 p-M10x20-C2	50	82	22.5	62	M10	20	60
182233	VTL.50/80 p-M10x20-C9	50	82	22.5	62	M10	20	60
182238	VTL.50/80 p-M10x50-C2	50	82	22.5	62	M10	50	75
182239	VTL.50/80 p-M10x50-C9	50	82	22.5	62	M10	50	75