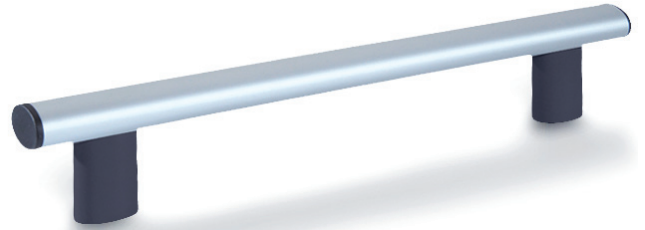


GN 366

Oval tubular handles



- **Tube**
Aluminium, wall thickness 2 mm.
- **Handle shanks**
Polyamide based (PA) technopolymer, glas fibre reinforced, temperature resistant up to 100 °C.
- **Tube end caps**
Polyamide based (PA) technopolymer, glas fibre reinforced, temperature resistant up to 100 °C.
- **Finish**
 - Version **SW**:
Tube: RAL 9005 black colour, matte finish, epoxy resin coating.
Handle shanks: black, matte finish. Tube end caps: black, matte finish.
 - Version **ELS**:
Tube: anodised, natural colour. Handle shanks: black, matte finish.
Tube end caps: black, matte finish.
 - Version **ELG**: Tube: anodised, natural colour.
Handle shanks: light grey, matte finish.
Tube end caps: light grey, matte finish.
- **Assembly**
Back mounting, zinc-plated steel threaded bushings.



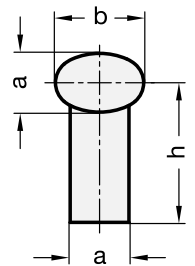
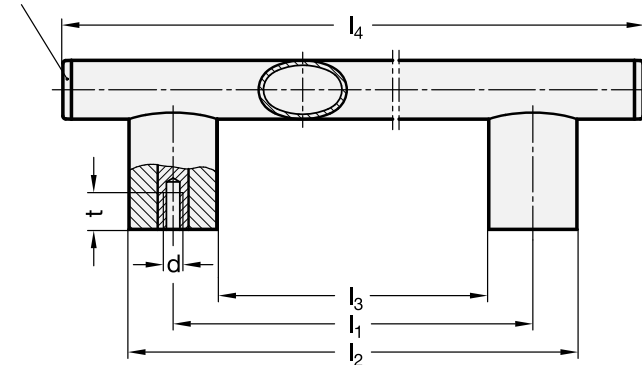
Special executions on request (For sufficient quantities)

Different lengths.

Features and applications

Characteristics for the design of the GN 366 oval handles: tube and handle base made in the same elliptical profile.

Plastic cover cap



Standard Elements	Main dimensions							Mounting holes		Δ
	Description	b	l1 ±0.5	a	h	l2	l3	l4	d	
GN 366-36-M6-200-*	36	200	24	57	236	164	290	M6	15	360
GN 366-36-M6-250-*	36	250	24	57	286	214	340	M6	15	440
GN 366-36-M6-300-*	36	300	24	57	336	264	390	M6	15	500
GN 366-36-M6-400-*	36	400	24	57	436	364	490	M6	15	550
GN 366-36-M6-500-*	36	500	24	57	536	464	590	M6	15	610
GN 366-36-M6-600-*	36	600	24	57	636	564	690	M6	15	700
GN 366-36-M8-200-*	36	200	24	57	236	164	290	M8	15	220
GN 366-36-M8-250-*	36	250	24	57	286	214	340	M8	15	350
GN 366-36-M8-300-*	36	300	24	57	336	264	390	M8	15	420
GN 366-36-M8-400-*	36	400	24	57	436	364	490	M8	15	500
GN 366-36-M8-500-*	36	500	24	57	536	464	590	M8	15	610
GN 366-36-M8-600-*	36	600	24	57	636	564	690	M8	15	660

* Complete the description of the standard item needed by adding the index of the finish of the tube and the handle shanks: SW (black/black), ELS (anodised/black) or ELG (anodised/light grey).