

Hook clamps



Standard executions

- **TLE.Z**: zinc-plated steel basic hook clamps.
- **TLEL.Z**: zinc-plated steel basic hook clamps with padlock holes.
- **TLE.SST**: AISI 304 stainless steel basic hook clamps

Special executions on request

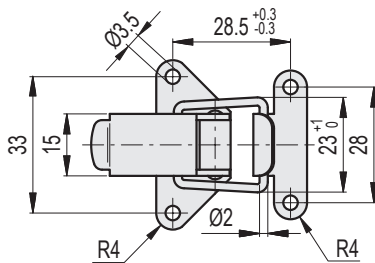
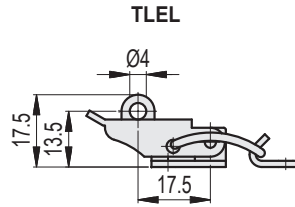
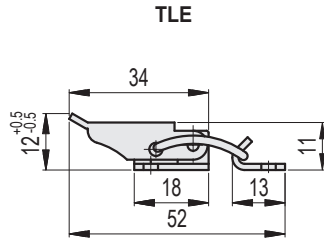
- Hook clamps in unplated steel or nickel-plated steel.
- Catch brackets in different shapes and finishes.



TLEL

14
676

Hook, toggle and power clamps



Standard Elements		Maximum working load	Load at breakage	⚖
Code	Description	[N]	[N]	g
420091	TLE.Z-15/52+R	550	1200	21
420092	TLE.SST-15/52+R	550	1800	21
420093	TLEL.Z-15/52+R	550	1800	21