

# GN 871

## Levelling shims

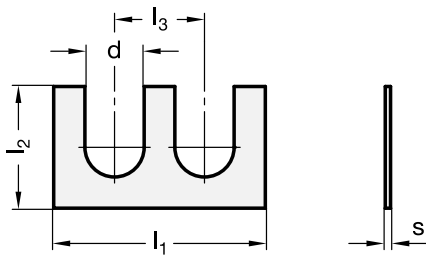


- **Material**  
Black-oxide steel.

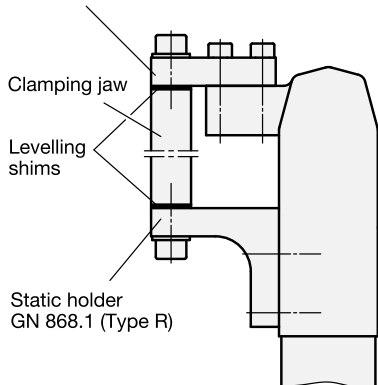
### Features and applications

Levelling shims GN 871 are used to correct any discrepancy in the alignment of the two clamping jaw levels. This facilitates in a simple way the optimum clamping position of the jaws, i.e. also the optimal clamping force. The levelling shims are only available as a complete set of five of different thickness for each size.

EXTENDED RANGE



Clamping arm GN 868 (Type R)



# GN 870

## Guide bushes

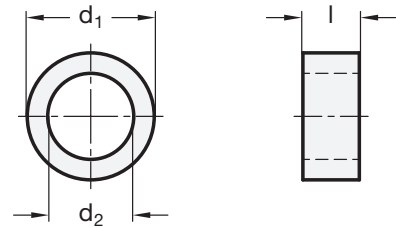


- **Material**  
Black-oxide steel.

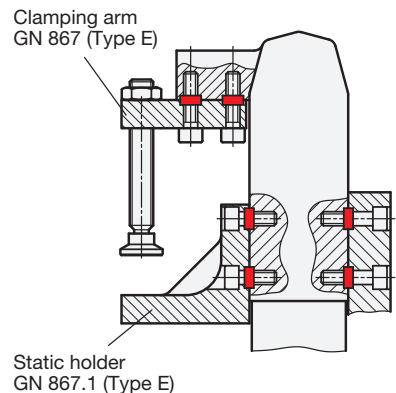
### Features and applications

Guide bushes GN 870 ensure accurate location of the clamping jaws and static holders, as well as the power clamps. At the same time they absorb side thrust and eliminate excessive load on the mounting screws. Guide bushes are part of the accessories supplied. However, the latter have to be ordered separately when ordering power clamps.

EXTENDED RANGE



Examples of application



Standard Elements	Main dimensions									△△
	Description	l <sub>1</sub>	s				d	l <sub>2</sub>	l <sub>3</sub>	
GN 871-30	30	0.1	0.2	0.3	0.5	1	9.2	13	17	3
GN 871-40	40	0.1	0.2	0.3	0.5	1	11.2	17	23	5
GN 871-50	50	0.1	0.2	0.3	0.5	1	13.2	20	30	9
GN 871-60	60	0.1	0.2	0.3	0.5	1	13.2	20	40	13

Standard Elements	Main dimensions				△△
	Description	d <sub>1</sub> h <sub>6</sub>	d <sub>2</sub>	l	
GN 870-7	7	5.1	4	1	
GN 870-9	9	6.1	4	1	
GN 870-11	11	8.1	4	2	
GN 870-13	13	10.1	4	2	