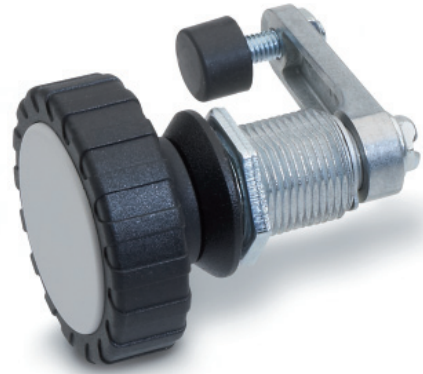


GN 516.1

Rotary clamping latches

RoHS

- **Lock housing**
Zinc alloy die-cast.
- **Locating ring**
Zinc alloy die-cast, epoxy resin coating RAL 9005 black matte finish.
- **Latch**
Zinc-plated steel, blue passivated.
- **Knob, Wrench, Lever**
Polyamide based (PA) technopolymer, black colour, matte finish.
- **Cover cap**
Polyamide based (PA) technopolymer, light grey colour, matte finish.
- **Standard versions available**
 - Type **DK**: operation with triangular spindle (DK7).
 - Type **VK7**: operation with square spindle A/F7.
 - Type **VK8**: operation with square spindle A/F8.
 - Type **VDE**: operation with double bit.
 - Type **RG**: operation with knurled knob GN 7336.
 - Type **KG**: operation with wrench.
 - Type **HG**: operation with lever.
- **Accessories on request**
Key GN 119.2 (see page 628).



13

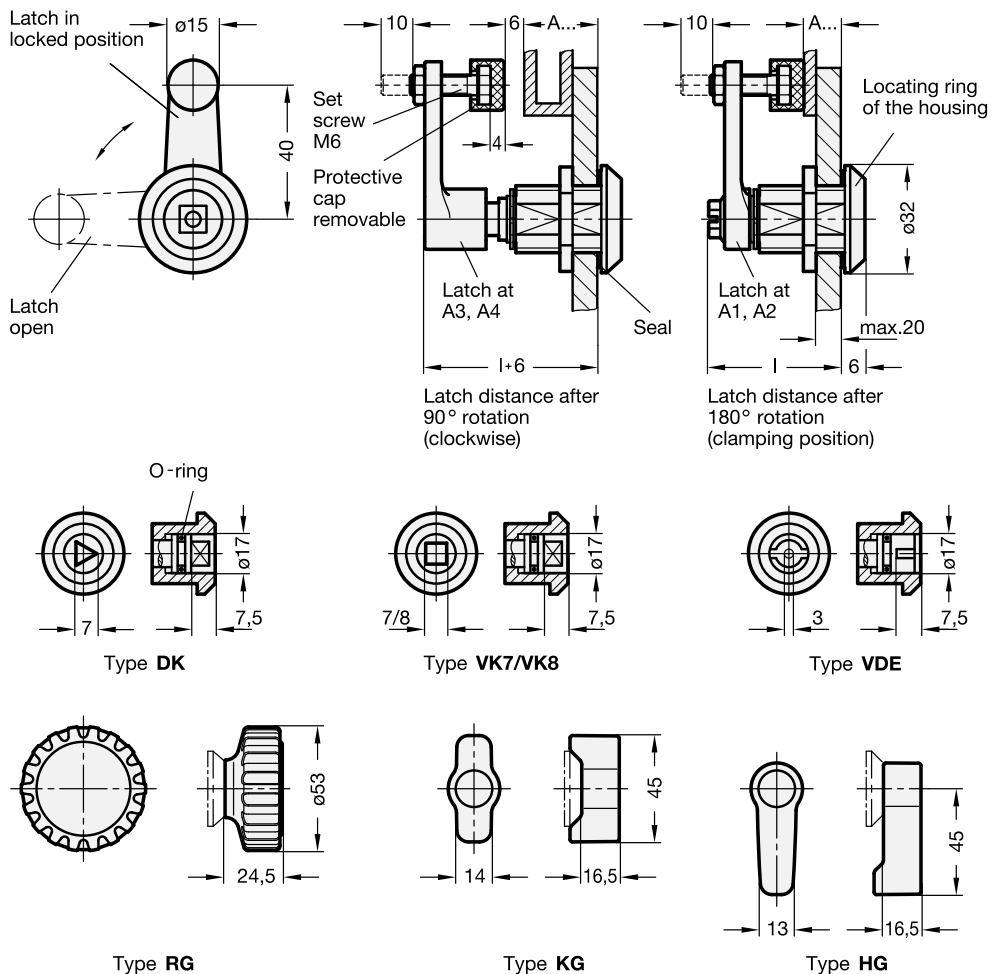
622

Latches

Features and applications

The rotary clamping latches GN 516.1 have a closing mechanism which transfers the rotary movement of the operating element (key) into a 90° turn and then into a 6 mm linear stroke.

This mechanism is designed for common applications such as making a tight and vibration-proof interlock in the end position (retaining position) in connection with the protective cap.



Standard Elements	Main dimension					Δ g
	A1	A2	A3	A4	l	
GN 516.1-DK-A1	1 ... 11	-	-	-	40.5	106
GN 516.1-DK-A2	-	11 ... 21	-	-	40.5	106
GN 516.1-DK-A3	-	-	21 ... 31	-	56	106
GN 516.1-DK-A4	-	-	-	31 ... 41	56	106
GN 516.1-VK7-A1	1 ... 11	-	-	-	40.5	106
GN 516.1-VK7-A2	-	11 ... 21	-	-	40.5	106
GN 516.1-VK7-A3	-	-	21 ... 31	-	56	106
GN 516.1-VK7-A4	-	-	-	31 ... 41	56	106
GN 516.1-VK8-A1	1 ... 11	-	-	-	40.5	106
GN 516.1-VK8-A2	-	11 ... 21	-	-	40.5	106
GN 516.1-VK8-A3	-	-	21 ... 31	-	56	106
GN 516.1-VK8-A4	-	-	-	31 ... 41	56	106
GN 516.1-VDE-A1	1 ... 11	-	-	-	40.5	110
GN 516.1-VDE-A2	-	11 ... 21	-	-	40.5	110
GN 516.1-VDE-A3	-	-	21 ... 31	-	56	110
GN 516.1-VDE-A4	-	-	-	31 ... 41	56	110
GN 516.1-RG-A1	1 ... 11	-	-	-	40.5	140
GN 516.1-RG-A2	-	11 ... 21	-	-	40.5	140
GN 516.1-RG-A3	-	-	21 ... 31	-	56	140
GN 516.1-RG-A4	-	-	-	31 ... 41	56	140
GN 516.1-KG-A1	1 ... 11	-	-	-	40.5	120
GN 516.1-KG-A2	-	11 ... 21	-	-	40.5	120
GN 516.1-KG-A3	-	-	21 ... 31	-	56	120
GN 516.1-KG-A4	-	-	-	31 ... 41	56	120
GN 516.1-HG-A1	1 ... 11	-	-	-	40.5	120
GN 516.1-HG-A2	-	11 ... 21	-	-	40.5	120
GN 516.1-HG-A3	-	-	21 ... 31	-	56	120
GN 516.1-HG-A4	-	-	-	31 ... 41	56	120