

Ball lock pins



- **Pin**
AISI 303 stainless steel.
- **T-Handle**
Polyamide based (PA) technopolymer, plastic, black.
- **Balls**
AISI 420 C stainless steel.
- **Spring**
AISI S 34565 stainless steel.
- **Working temperature**
From -30 °C to +80 °C.

Accessories on request

- Ball chains GN 111 (see page 360).
- Retaining cables GN 111.2 (see page 362).
- Spiral retaining cables GN 111.4 (see page 364).

Features and applications

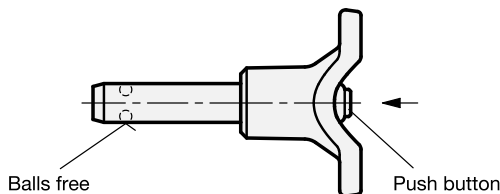
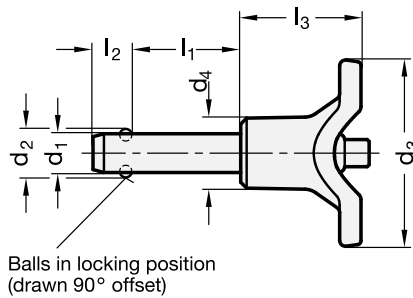
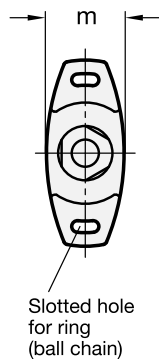
Ball lock pins GN 113.7 are used for quick fixing, connecting and locking of various parts and workpieces. A typical application is locating pins which have often to be removed and installed again.


By pressing the spring loaded push button both balls are unlocked and by releasing it, the balls are locked again.

Ball lock pins GN 113.8 have an extreme load capacity, the pin is made of heavy duty, hardened and highly abrasion-resistant stainless steel.

The load values given in the above table at shar stress are theoretically obtained and indicative only. They constitute no general warranty of quality and condition.

The user must determine from case to case whether a product ist suitable for the intended use.



Standard Elements	Main dimensions								Mounting bore H11	Double sided shearing force in kN	
Description	d1 ^{-0.04 -0.08}	l1	d2	d3	d4	l2 ±0.2	l3	m			g
GN 113.7-5-10	5	10	5.5	40	13.5	6	25	15.5	5	14	15
GN 113.7-5-15	5	15	5.5	40	13.5	6	25	15.5	5	14	16
GN 113.7-5-20	5	20	5.5	40	13.5	6	25	15.5	5	14	16
GN 113.7-5-25	5	25	5.5	40	13.5	6	25	15.5	5	14	17
GN 113.7-5-30	5	30	5.5	40	13.5	6	25	15.5	5	14	18
GN 113.7-6-10	6	10	7	40	13.5	7.1	25	15.5	6	21	15
GN 113.7-6-15	6	15	7	40	13.5	7.1	25	15.5	6	21	15
GN 113.7-6-20	6	20	7	40	13.5	7.1	25	15.5	6	21	20
GN 113.7-6-25	6	25	7	40	13.5	7.1	25	15.5	6	21	20
GN 113.7-6-30	6	30	7	40	13.5	7.1	25	15.5	6	21	20
GN 113.7-6-35	6	35	7	40	13.5	7.1	25	15.5	6	21	22
GN 113.7-6-40	6	40	7	40	13.5	7.1	25	15.5	6	21	25
GN 113.7-6-45	6	45	7	40	13.5	7.1	25	15.5	6	21	25
GN 113.7-6-50	6	50	7	40	13.5	7.1	25	15.5	6	21	28
GN 113.7-8-20	8	20	9.5	48	18	8.2	31	20.5	8	38	30
GN 113.7-8-25	8	25	9.5	48	18	8.2	31	20.5	8	38	35
GN 113.7-8-30	8	30	9.5	48	18	8.2	31	20.5	8	38	40
GN 113.7-8-35	8	35	9.5	48	18	8.2	31	20.5	8	38	40
GN 113.7-8-40	8	40	9.5	48	18	8.2	31	20.5	8	38	50
GN 113.7-8-45	8	45	9.5	48	18	8.2	31	20.5	8	38	70
GN 113.7-8-50	8	50	9.5	48	18	8.2	31	20.5	8	38	100
GN 113.7-10-20	10	20	12	48	18	9.6	31	20.5	10	60	40
GN 113.7-10-25	10	25	12	48	18	9.6	31	20.5	10	60	40
GN 113.7-10-30	10	30	12	48	18	9.6	31	20.5	10	60	50
GN 113.7-10-35	10	35	12	48	18	9.6	31	20.5	10	60	60
GN 113.7-10-40	10	40	12	48	18	9.6	31	20.5	10	60	60
GN 113.7-10-45	10	45	12	48	18	9.6	31	20.5	10	60	60
GN 113.7-10-50	10	50	12	48	18	9.6	31	20.5	10	60	70
GN 113.7-10-60	10	60	12	48	18	9.6	31	20.5	10	60	80
GN 113.7-12-25	12	25	14.5	58	24	10.6	36.5	27.5	12	87	94
GN 113.7-12-30	12	30	14.5	58	24	10.6	36.5	27.5	12	87	100
GN 113.7-12-35	12	35	14.5	58	24	10.6	36.5	27.5	12	87	104
GN 113.7-12-40	12	40	14.5	58	24	10.6	36.5	27.5	12	87	109
GN 113.7-12-45	12	45	14.5	58	24	10.6	36.5	27.5	12	87	110
GN 113.7-12-50	12	50	14.5	58	24	10.6	36.5	27.5	12	87	120
GN 113.7-12-60	12	60	14.5	58	24	10.6	36.5	27.5	12	87	120
GN 113.7-12-70	12	70	14.5	58	24	10.6	36.5	27.5	12	87	130
GN 113.7-12-80	12	80	14.5	58	24	10.6	36.5	27.5	12	87	130
GN 113.7-16-30	16	30	19	58	24	14	36.5	27.5	16	155	140
GN 113.7-16-35	16	35	19	58	24	14	36.5	27.5	16	155	160
GN 113.7-16-40	16	40	19	58	24	14	36.5	27.5	16	155	160
GN 113.7-16-45	16	45	19	58	24	14	36.5	27.5	16	155	160
GN 113.7-16-50	16	50	19	58	24	14	36.5	27.5	16	155	180
GN 113.7-16-60	16	60	19	58	24	14	36.5	27.5	16	155	180
GN 113.7-16-70	16	70	19	58	24	14	36.5	27.5	16	155	200
GN 113.7-16-80	16	80	19	58	24	14	36.5	27.5	16	155	200