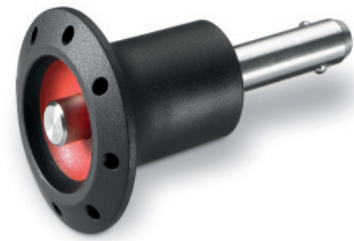


## Ball lock pins



- **Pin and push button**  
AISI 630 stainless steel, precipitation hardened, hard coated.
- **Knob**  
Polyamide based (PA) technopolymer, plastic, black-grey / red.
- **Balls**  
AISI 420 C stainless steel.
- **Spring**  
AISI 631 stainless steel.
- **Maximum working temperature**  
From -30 °C to +80 °C.



### Accessories on request

- Ball chains GN 111 (see page 360).
- Retaining cables GN 111.2 (see page 362).
- Spiral retaining cables GN 111.4 (see page 364).

### Features and applications

Ball lock pins GN 113.6 are used for quick fixing, connecting and locking of various parts and workpieces. A typical application is locating pins which have often to be removed and installed again.

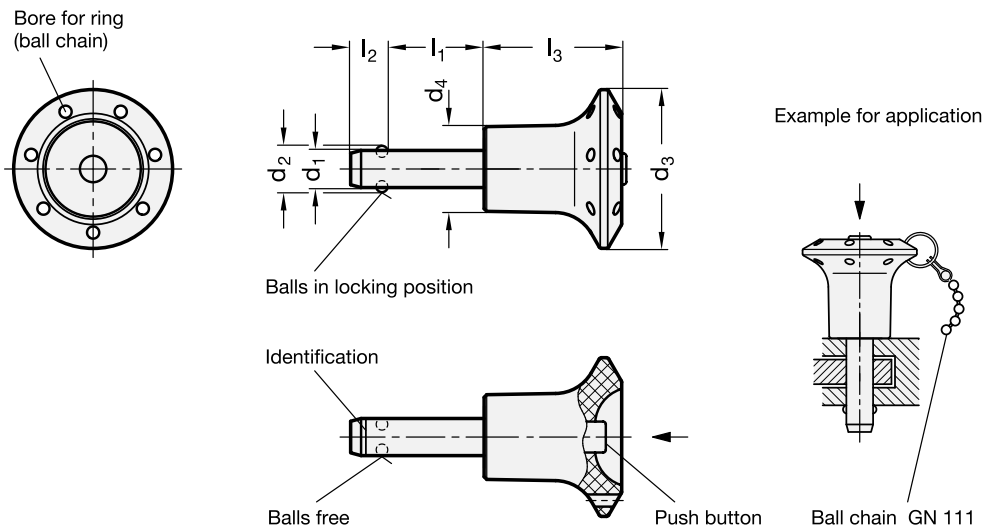
Ball lock pins GN 113.6 have an extreme load capacity, the pin is made of heavy duty, hardened and highly abrasion-resistant stainless steel.

### Instructions of use

By pressing the spring loaded push button both balls are unlocked and by releasing it, the balls are locked again.

8  
348

Indexing elements



Standard Elements	Main dimensions							Location bore H11	Double sided shearing force in kN	△△ g
	d1 <sup>-0.04</sup> -0.08	l1 <sup>+0.6</sup>	d2	d3	d4	l2 <sup>±0.2</sup>	l3 <sup>-0.2</sup>			
GN 113.6-5-10	5	10	5.5	30	16	6	26	5	24	17
GN 113.6-5-15	5	15	5.5	30	16	6	26	5	24	18
GN 113.6-5-20	5	20	5.5	30	16	6	26	5	24	18
GN 113.6-5-25	5	25	5.5	30	16	6	26	5	24	20
GN 113.6-5-30	5	30	5.5	30	16	6	26	5	24	20

Standard Elements	Main dimensions							Location bore H11	Double sided shearing force in kN	$\Delta$
Description	d1	h $\pm 0.6$	d2	d3	d4	l2 $\pm 0.2$	l3 -0.2			g
GN 113.6-6-10	6	10	7	30	16	7.1	26	6	35	20
GN 113.6-6-15	6	15	7	30	16	7.1	26	6	35	19
GN 113.6-6-20	6	20	7	30	16	7.1	26	6	35	20
GN 113.6-6-25	6	25	7	30	16	7.1	26	6	35	20
GN 113.6-6-30	6	30	7	30	16	7.1	26	6	35	20
GN 113.6-6-35	6	35	7	30	16	7.1	26	6	35	23
GN 113.6-6-40	6	40	7	30	16	7.1	26	6	35	24
GN 113.6-6-45	6	45	7	30	16	7.1	26	6	35	26
GN 113.6-6-50	6	50	7	30	16	7.1	26	6	35	20
GN 113.6-8-20	8	20	9.5	35	19	8.2	32.5	8	63	42
GN 113.6-8-25	8	25	9.5	35	19	8.2	32.5	8	63	40
GN 113.6-8-30	8	30	9.5	35	19	8.2	32.5	8	63	46
GN 113.6-8-35	8	35	9.5	35	19	8.2	32.5	8	63	48
GN 113.6-8-40	8	40	9.5	35	19	8.2	32.5	8	63	50
GN 113.6-8-45	8	45	9.5	35	19	8.2	32.5	8	63	52
GN 113.6-8-50	8	50	9.5	35	19	8.2	32.5	8	63	60
GN 113.6-10-20	10	20	12	35	19	9.6	32.5	10	100	49
GN 113.6-10-25	10	25	12	35	19	9.6	32.5	10	100	50
GN 113.6-10-30	10	30	12	35	19	9.6	32.5	10	100	54
GN 113.6-10-35	10	35	12	35	19	9.6	32.5	10	100	58
GN 113.6-10-40	10	40	12	35	19	9.6	32.5	10	100	60
GN 113.6-10-45	10	45	12	35	19	9.6	32.5	10	100	63
GN 113.6-10-50	10	50	12	35	19	9.6	32.5	10	100	60
GN 113.6-10-60	10	60	12	35	19	9.6	32.5	10	100	72
GN 113.6-12-25	12	25	14.5	42	25	10.6	39	12	144	98
GN 113.6-12-30	12	30	14.5	42	25	10.6	39	12	144	100
GN 113.6-12-35	12	35	14.5	42	25	10.6	39	12	144	100
GN 113.6-12-40	12	40	14.5	42	25	10.6	39	12	144	120
GN 113.6-12-45	12	45	14.5	42	25	10.6	39	12	144	120
GN 113.6-12-50	12	50	14.5	42	25	10.6	39	12	144	120
GN 113.6-12-60	12	60	14.5	42	25	10.6	39	12	144	120
GN 113.6-12-70	12	70	14.5	42	25	10.6	39	12	144	140
GN 113.6-12-80	12	80	14.5	42	25	10.6	39	12	144	146
GN 113.6-16-30	16	30	19	42	25	14	39	16	257	135
GN 113.6-16-35	16	35	19	42	25	14	39	16	257	142
GN 113.6-16-40	16	40	19	42	25	14	39	16	257	140
GN 113.6-16-45	16	45	19	42	25	14	39	16	257	157
GN 113.6-16-50	16	50	19	42	25	14	39	16	257	166
GN 113.6-16-60	16	60	19	42	25	14	39	16	257	180
GN 113.6-16-70	16	70	19	42	25	14	39	16	257	200
GN 113.6-16-80	16	80	19	42	25	14	39	16	257	220