

GN 111

EXTENDED RANGE

Ball chains

RoHS

- **Ball chain**
Nickel coated brass.
- **Ring**
AISI 303 stainless steel.

Accessories on request

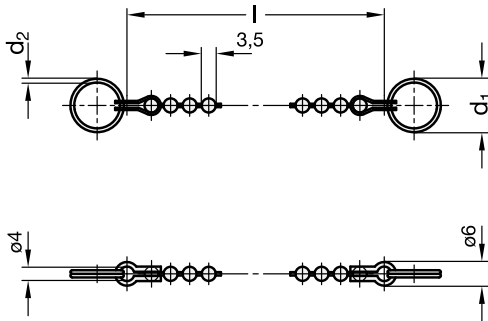
Single key rings GN 111.3 (see page 361).

Applications

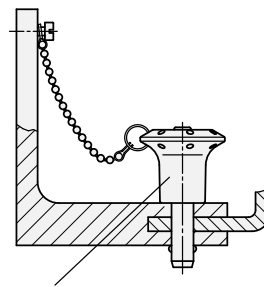
Ball chains GN 111 are mainly used in connection with ball lock pins and pins with axial lock.

Instructions of use

- Suitable for ball lock pins and pins with axial lock
 - ¹⁾ GN 113.1, GN 124 Ø 6, Ø 8,
GN 113.3, GN 113.4, GN 113.5, GN 113.6, GN 113.7,
GN 113.8, GN 114.2, GN 114.3, GN 114.6 all Ø
- Suitable for ball lock pins GN 124
 - ²⁾ Ø10, Ø12, Ø16



Example of application



Pins GN 114.2 / 114.3
Ball lock pins GN 113.5 / 113.6

8

360

Indexing elements

Standard Elements	Main dimensions			Load in N		△△
	Description	l	d ₁	d ₂	with ring	
GN 111-200-14	200	14 ¹⁾	1	50	180	100
GN 111-200-18	200	18 ²⁾	1.3	90	180	100
GN 111-200-24	200	24	1.5	100	180	100
GN 111-200-30	200	30	1.8	120	180	100
GN 111-320-14	320	14 ¹⁾	1	50	180	100
GN 111-320-18	320	18 ²⁾	1.3	90	180	100
GN 111-320-24	320	24	1.5	100	180	150
GN 111-320-30	320	30	1.8	120	180	150
GN 111-500-14	500	14 ¹⁾	1	50	180	150
GN 111-500-18	500	18 ²⁾	1.3	90	180	150
GN 111-500-24	500	24	1.5	100	180	200
GN 111-500-30	500	30	1.8	120	180	200
GN 111-1000-14	1000	14 ¹⁾	1	50	180	300
GN 111-1000-18	1000	18 ²⁾	1.3	90	180	300
GN 111-1000-24	1000	24	1.5	100	180	300
GN 111-1000-30	1000	30	1.8	120	180	300