

Control knobs



• Material

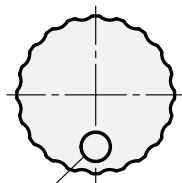
AISI 304 stainless steel with sandblasted matte finish.

- Version **M**: marking engraved with laser precision.

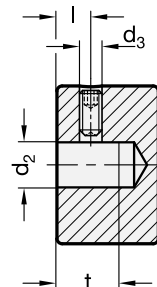
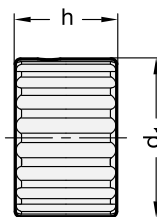
- Version **N**: plain.

• Grub screw

Stainless steel DIN 916 with internal hexagon and with serrated point.



Marking
opposite grub screw



Standard Elements	Main dimensions				Mounting hole		
Description	d1	d3	h	l	d2 H8	t min.	g
GN 436-24-B5-N-MT	24	M4	16	4	B5	10	53
GN 436-24-B5-M-MT	24	M4	16	4	B5	10	53
GN 436-24-B6-N-MT	24	M4	16	4	B6	10	52
GN 436-24-B6-M-MT	24	M4	16	4	B6	10	52
GN 436-28-B6-N-MT	28	M4	18	4	B6	11	80
GN 436-28-B6-M-MT	28	M4	18	4	B6	11	80
GN 436-28-B8-N-MT	28	M4	18	4	B8	11	78
GN 436-28-B8-M-MT	28	M4	18	4	B8	11	78