

Hinges



Material

AISI CF-8 stainless steel **NI**.

Finish

Sand-blasted, matte finish, **GS**.

Rotation pin

AISI 303 stainless steel.

- Identification no. **1**: fixed bearing (pin) right.

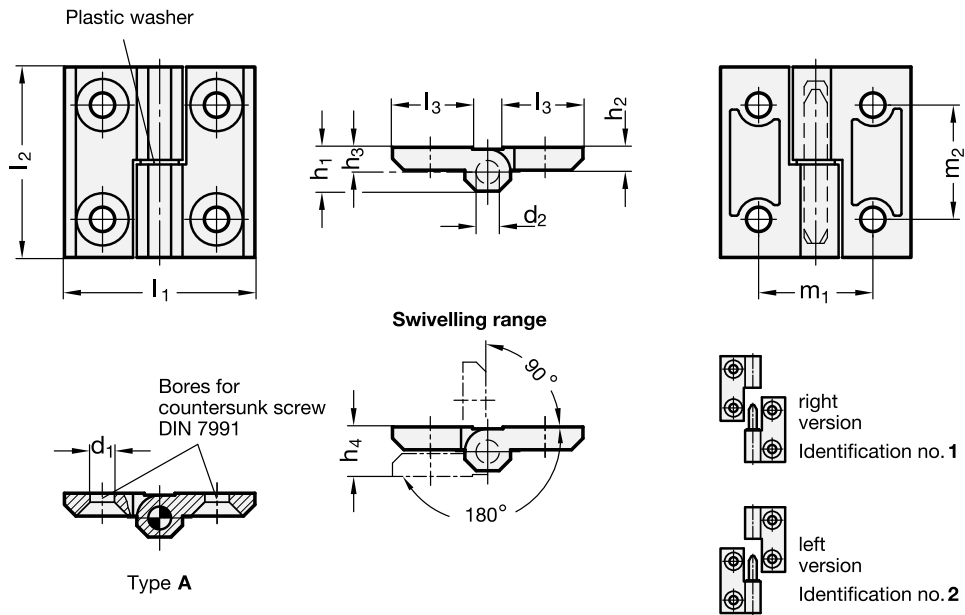
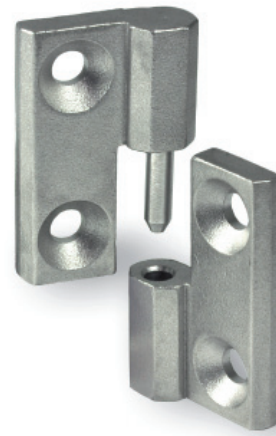
- Identification no. **2**: fixed bearing (pin) left.

Assembly

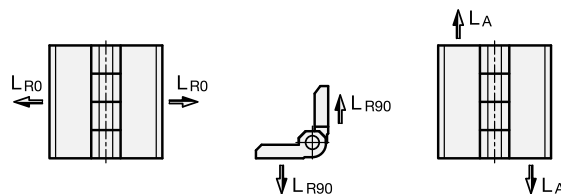
Type **A**: two couples of through holes for countersunk-head screws.

Rotation angle

Max. 270°, between 0° and -90° and between 0° and 180°.



Standard Elements	Main dimensions											Through holes	Δ
	Description	l ₁	l ₂	d ₁	d ₂	h ₁	h ₂	h ₃	l ₃	h ₄ +0.5	m ₁	m ₂	d ₁
GN 337-NI-40-40-A-1-GS	40	40	5.3	4	9	5	5.5	16	11	25	25	5.3	40
GN 337-NI-40-40-A-2-GS	40	40	5.3	4	9	5	5.5	16	11	25	25	5.3	41
GN 337-NI-50-50-A-1-GS	50	50	6.4	6	11.5	6	6.5	21	13	30	30	6.4	80
GN 337-NI-50-50-A-2-GS	50	50	6.4	6	11.5	6	6.5	21	13	30	30	8.3	83
GN 337-NI-60-60-A-1-GS	60	60	8.3	8	15	8	8.5	26	17	36	36	8.3	153
GN 337-NI-60-60-A-2-GS	60	60	8.3	8	15	8	8.5	26	17	36	36	8.3	156



Standard Elements	Radial load in N		Axial load in N
	Description	LR0	LR90
GN 337-NI-40-40-A	3000	3500	2000
GN 337-NI-50-50-A	5000	3500	2500
GN 337-NI-60-60-A	6000	6000	5000