

# GN 337

## Hinges

RoHS

### Material

Zinc alloy die-cast **ZD**, black matte epoxy resin coating.

- Version **SW**: RAL 9005, black, matte finish.

- Version **SR**: RAL 9006, silver, matte finish.

### Rotation pin

AISI 303 stainless steel.

- Identification no. **1**: fixed bearing (pin) right.

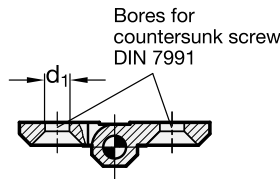
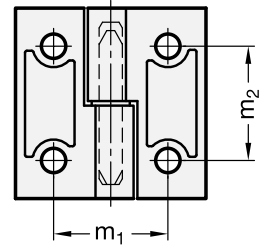
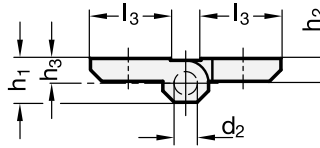
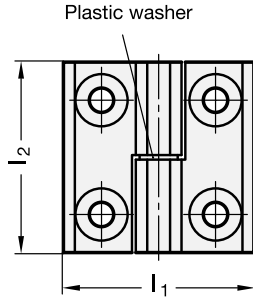
- Identification no. **2**: fixed bearing (pin) left.

### Assembly

Type **A**: two couples of through holes for countersunk-head screws.

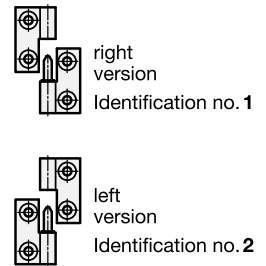
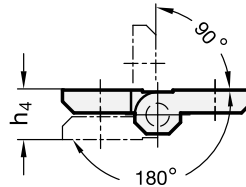
### Rotation angle

Max. 270°, between 0° and -90° and between 0° and 180°.

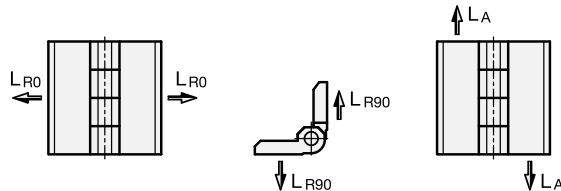


Type A

### Swivelling range



Standard Elements	Main dimensions											Through holes	$\Delta\Delta$
Description	l <sub>1</sub>	l <sub>2</sub>	d <sub>1</sub>	d <sub>2</sub>	h <sub>1</sub>	h <sub>2</sub>	h <sub>3</sub>	l <sub>3</sub>	h <sub>4</sub> +0.5	m <sub>1</sub>	m <sub>2</sub>	d <sub>1</sub>	g
GN 337-ZD-40-40-A-1-SW	40	40	5.3	4	9	5	5.5	16	11	25	25	5.3	40
GN 337-ZD-40-40-A-1-SR	40	40	5.3	4	9	5	5.5	16	11	25	25	5.3	40
GN 337-ZD-40-40-A-2-SW	40	40	5.3	4	9	5	5.5	16	11	25	25	5.3	41
GN 337-ZD-40-40-A-2-SR	40	40	5.3	4	9	5	5.5	16	11	25	25	5.3	41
GN 337-ZD-50-50-A-1-SW	50	50	6.4	6	11.5	6	6.5	21	13	30	30	6.4	80
GN 337-ZD-50-50-A-1-SR	50	50	6.4	6	11.5	6	6.5	21	13	30	30	6.4	80
GN 337-ZD-50-50-A-2-SW	50	50	6.4	6	11.5	6	6.5	21	13	30	30	6.4	83
GN 337-ZD-50-50-A-2-SR	50	50	6.4	6	11.5	6	6.5	21	13	30	30	6.4	83
GN 337-ZD-60-60-A-1-SW	60	60	8.3	8	15	8	8.5	26	17	36	36	8.3	153
GN 337-ZD-60-60-A-1-SR	60	60	8.3	8	15	8	8.5	26	17	36	36	8.3	153
GN 337-ZD-60-60-A-2-SW	60	60	8.3	8	15	8	8.5	26	17	36	36	8.3	156
GN 337-ZD-60-60-A-2-SR	60	60	8.3	8	15	8	8.5	26	17	36	36	8.3	156



Standard Elements	Radial load in N		Axial load in N
Description	LR0	LR90	LA
GN 337-ZD-40-40-A	2200	1600	1500
GN 337-ZD-50-50-A	3000	2500	2500
GN 337-ZD-60-60-A	4300	3500	3500