

GN 139.4

Mounting plate

RoHS

• Material

Zinc alloy die-cast, silver metallic epoxy resin coating.

Features and applications

The angled mounting plate GN 139.4 allows the hinges GN 139.1 / GN 139.2 (see page 602 and 605) to be attached between frame and door, i.e. the door gap.

The long slotted holes allow also allow the attachment to profile systems.

Countersunk screws for fixing the hinges to the mounting plate are included part of the order.

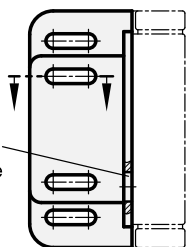


12
607

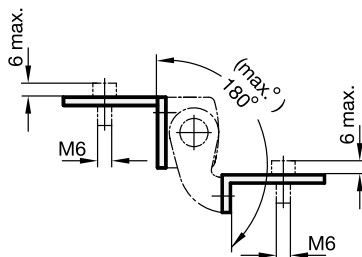
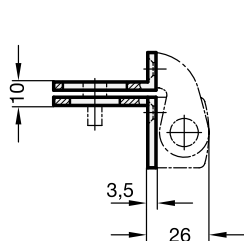
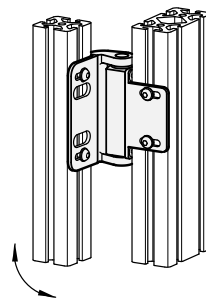
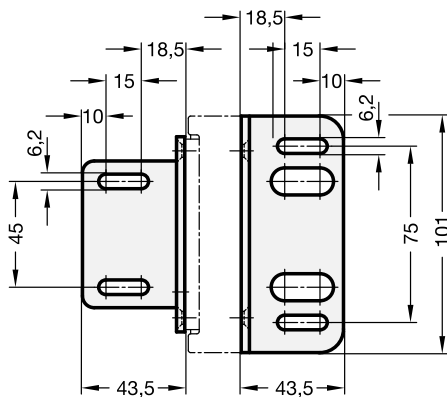
Hinges

Basic position

Bore for cable connection at the backside



180° swivelled



Standard Elements	Main dimension	⚖
Description	Length	g
GN 139.4-101	101	240