

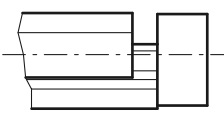
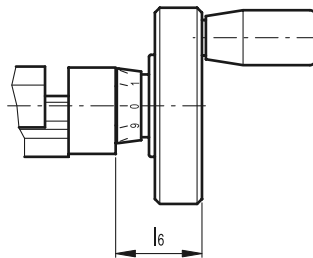
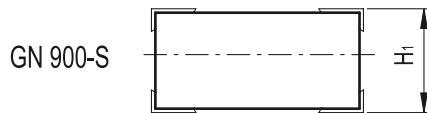
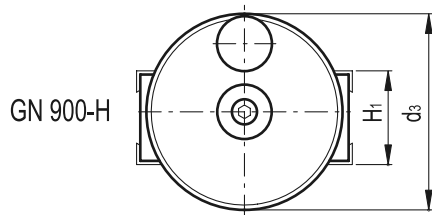
GN 900

Adjustable slide units



- **Slides and end plates**
Aluminium, press formed and anodised extrusion, natural colour.
- **Guide shafts**
Stainless steel.
- **Lead spindle and ball bearing**
Stainless steel.
- **Lead nut**
Plastic.
- **Fixing screws**
Stainless steel.
- **Control knob and scale**
Black anodised aluminium.
- **Adjustable hand lever**
 - Execution **1**: without adjustable handle
 - Execution **2**: with adjustable handle GN 302 (see page 243) (only from b=50).
- **Standard executions available**
 - Execution **D**: with control knob.
 - Execution **H**: with handwheel.
 - Execution **DN / DR**: with control knob and digital position indicator, DD51.
 - Execution **HN / HR**: with a special type of handwheel VD.FP (see page 82) and a digital position indicator, DD51 (see page 488).
 - Execution **S**: without adjustable spindle and operating element.

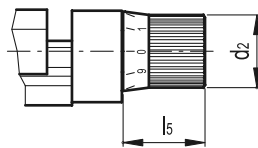
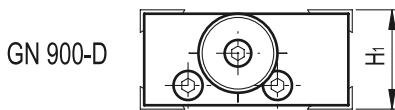
GN 900-50
GN 900-80
GN 900-120



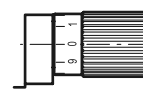
GN 900-50
GN 900-80
GN 900-120

Features and applications

Adjustable slide units GN 900 can be combined with a range of adaptors to give various axis configurations. These fastening units and connecting sets GN 900.1 (see page 454), GN 900.2 (see page 455), GN 900.3 (see page 456) can be clamped to the adjustable slide units in a rapid and simple way. For fine adjustment there is a scale ring graduated in increments of digital position indicator 0,05 mm and 0,02 mm. Furthermore this adjustable slide units (execution **D**, with control knob) is rustproof.



GN 900-30



GN 900-DN

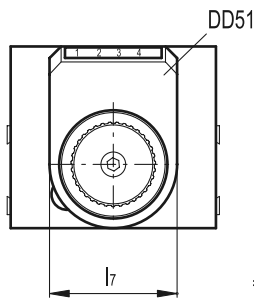
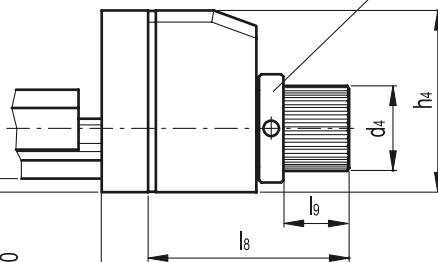


Figure in front of decimal point refers to the movement in mm

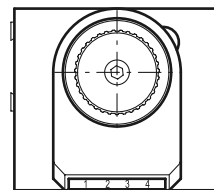
3.5mm protruding on size 50

Set ring to re-adjust the zero position of the position indicator

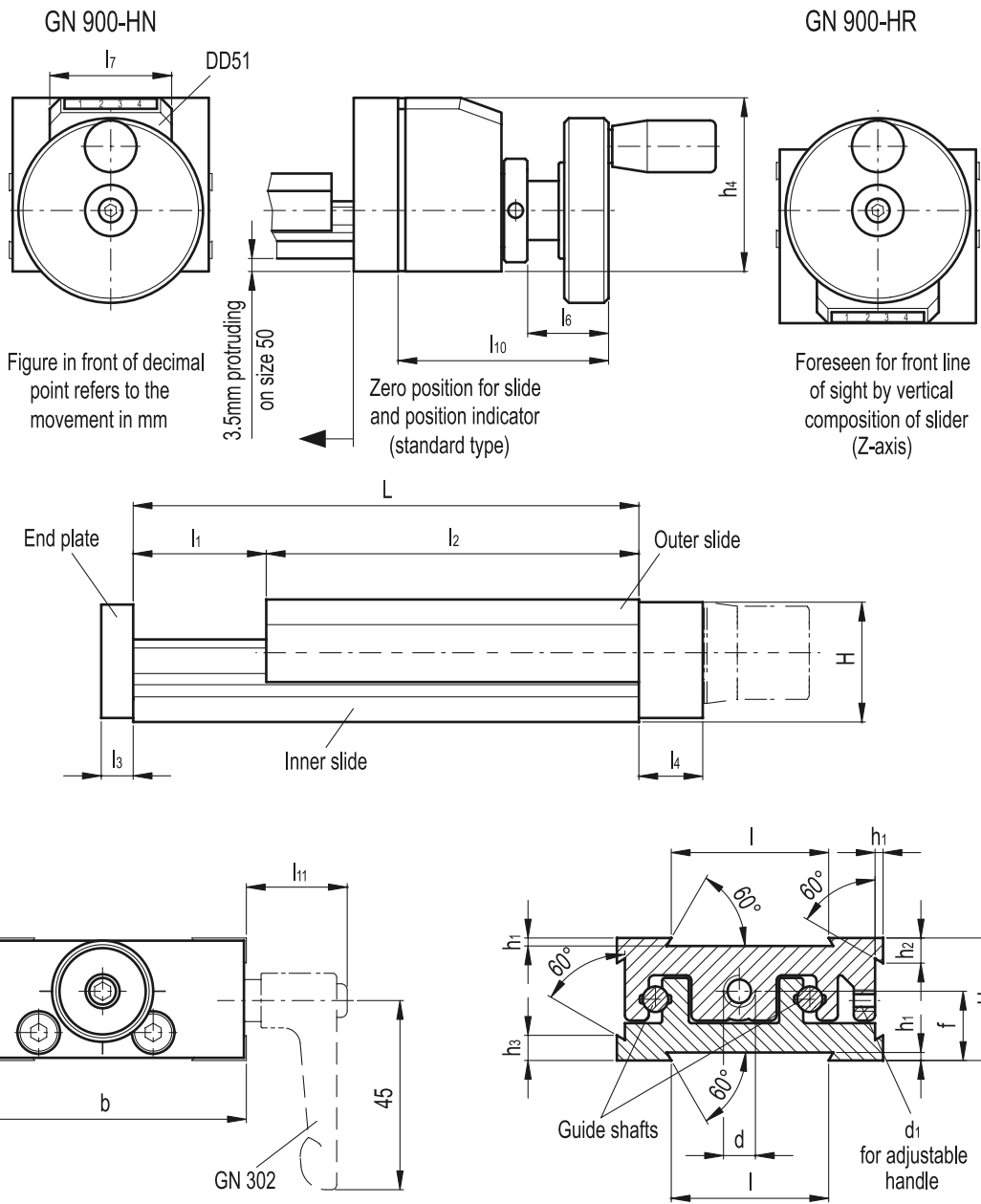


Zero position for slide and position indicator (standard type)

GN 900-DR



Foreseen for front line of sight by vertical composition of slider (Z-axis)



Standard Elements	Main dimensions																								
	b	L - l1	l	l2	l3	l4	l5	l6	l7	l8	l9	l10	l11	d	d1	d2	d3	d4	H	H1	h1	h2	h3	h4	f
GN 900-30-50-5-D-1	30	50-5	16	45	4	6	20	-	-	-	-	-	-	M4x0.5	M3	14	-	-	16	17	1	3	4	-	9.3
GN 900-30-55-10-D-1	30	55-10	16	45	4	6	20	-	-	-	-	-	-	M4x0.5	M3	14	-	-	16	17	1	3	4	-	9.3
GN 900-30-60-15-D-1	30	60-15	16	45	4	6	20	-	-	-	-	-	-	M4x0.5	M3	14	-	-	16	17	1	3	4	-	9.3
GN 900-30-65-20-D-1	30	65-20	16	45	4	6	20	-	-	-	-	-	-	M4x0.5	M3	14	-	-	16	17	1	3	4	-	9.3
GN 900-50-95-25-D-*	50	95-25	30	70	6	12	20	-	-	-	-	-	36	M6x1	M4	17	-	-	22.5	23	1.5	4.5	7	-	13
GN 900-50-120-50-D-*	50	120-50	30	70	6	12	20	-	-	-	-	-	36	M6x1	M4	17	-	-	22.5	23	1.5	4.5	7	-	13
GN 900-50-145-75-D-*	50	145-75	30	70	6	12	20	-	-	-	-	-	36	M6x1	M4	17	-	-	22.5	23	1.5	4.5	7	-	13
GN 900-50-170-100-D-*	50	170-100	30	70	6	12	20	-	-	-	-	-	36	M6x1	M4	17	-	-	22.5	23	1.5	4.5	7	-	13
GN 900-80-145-25-D-*	80	145-25	50	120	8	16	24	-	-	-	-	-	25	M8x1	M5	22	-	-	35.5	36	2	10	10	-	20.5
GN 900-80-170-50-D-*	80	170-50	50	120	8	16	24	-	-	-	-	-	25	M8x1	M5	22	-	-	35.5	36	2	10	10	-	20.5
GN 900-80-195-75-D-*	80	195-75	50	120	8	16	24	-	-	-	-	-	25	M8x1	M5	22	-	-	35.5	36	2	10	10	-	20.5
GN 900-80-220-100-D-*	80	220-100	50	120	8	16	24	-	-	-	-	-	25	M8x1	M5	22	-	-	35.5	36	2	10	10	-	20.5
GN 900-120-185-25-D-*	120	185-25	80	160	10	18	34	-	-	-	-	-	25	M10x1	M5	34	-	-	45	46	2	13.8	13.8	-	26.3
GN 900-120-210-50-D-*	120	210-50	80	160	10	18	34	-	-	-	-	-	25	M10x1	M5	34	-	-	45	46	2	13.8	13.8	-	26.3
GN 900-120-235-75-D-*	120	235-75	80	160	10	18	34	-	-	-	-	-	25	M10x1	M5	34	-	-	45	46	2	13.8	13.8	-	26.3
GN 900-120-260-100-D-*	120	260-100	80	160	10	18	34	-	-	-	-	-	25	M10x1	M5	34	-	-	45	46	2	13.8	13.8	-	26.3
GN 900-50-95-25-H-*	50	95-25	30	70	6	12	-	22	-	-	-	-	36	M6x1	M4	-	50	-	22.5	23	1.5	4.5	7	-	13
GN 900-50-120-50-H-*	50	120-50	30	70	6	12	-	22	-	-	-	-	36	M6x1	M4	-	50	-	22.5	23	1.5	4.5	7	-	13
GN 900-50-145-75-H-*	50	145-75	30	70	6	12	-	22	-	-	-	-	36	M6x1	M4	-	50	-	22.5	23	1.5	4.5	7	-	13
GN 900-50-170-100-H-*	50	170-100	30	70	6	12	-	22	-	-	-	-	36	M6x1	M4	-	50	-	22.5	23	1.5	4.5	7	-	13
GN 900-80-145-25-H-*	80	145-25	50	120	8	16	-	31	-	-	-	-	25	M8x1	M5	-	80	-	35.5	36	2	10	10	-	20.5
GN 900-80-170-50-H-*	80	170-50	50	120	8	16	-	31	-	-	-	-	25	M8x1	M5	-	80	-	35.5	36	2	10	10	-	20.5
GN 900-80-195-75-H-*	80	195-75	50	120	8	16	-	31	-	-	-	-	25	M8x1	M5	-	80	-	35.5	36	2	10	10	-	20.5
GN 900-80-220-100-H-*	80	220-100	50	120	8	16	-	31	-	-	-	-	25	M8x1	M5	-	80	-	35.5	36	2	10	10	-	20.5

*Complete the description of the standard item needed by adding 1 (without adjustable hand lever) or 2 (with adjustable hand lever).

