



Support bases with connection joint



- **Material**

Glass-fibre reinforced polyamide based (PA) technopolymer. Resistant to solvents, oils, greases and other chemical agents.

- **Colour**

Black, matte finish.

- **Assembly of levelling elements**

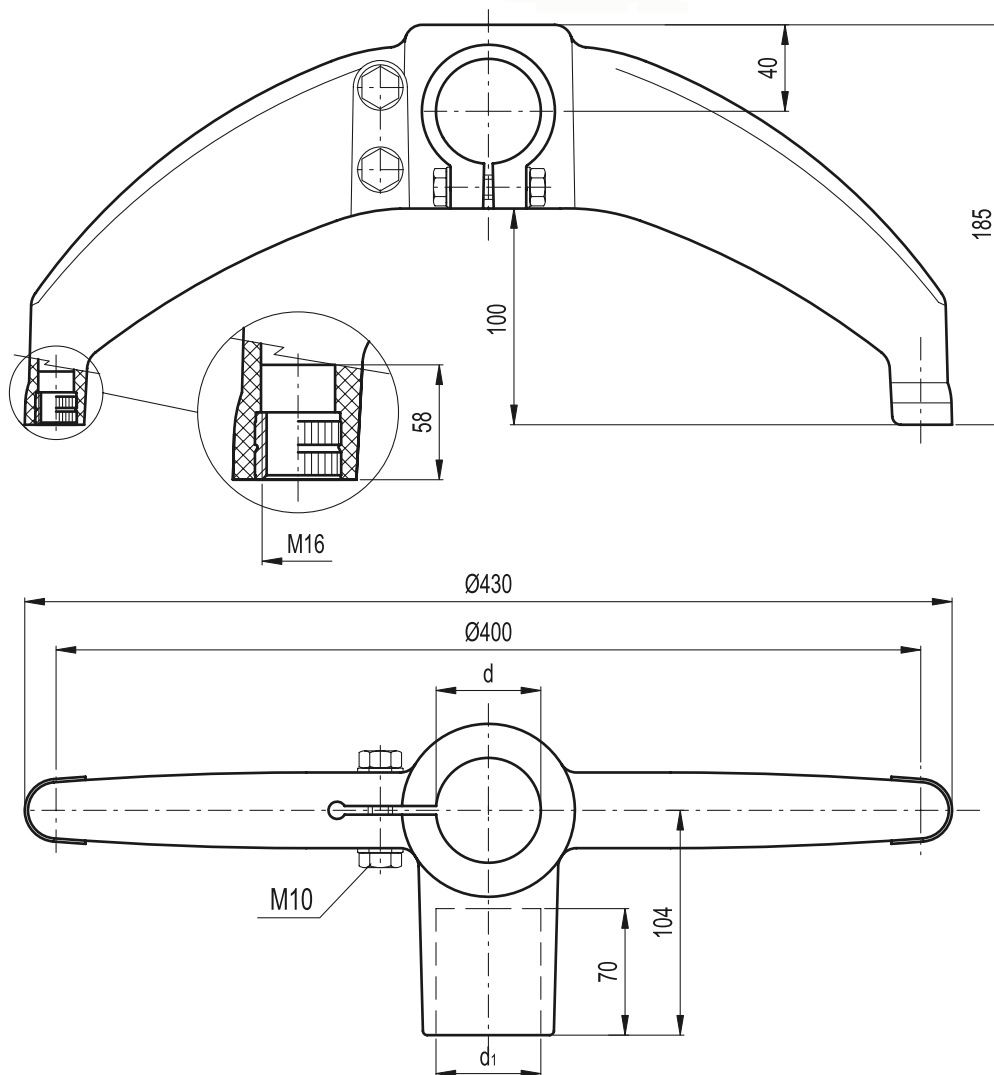
Brass bosses, tapped through holes for the assembly of levelling elements series LS.A (see page 716), LV.A (see page 730), LV.F (see page 736) (available as accessories sold separately).

- **Clamping system**

- Execution **A**: nuts, M10 screws and washers in zinc-plated steel.
- Execution **SST**: nuts, M10 screws and washers in AISI 304 stainless steel.

Features and applications

The absence of cavities and the slightly round shapes offer a modern and elegant aesthetics and guarantees the best cleaning.



Standard Elements				Tube assembly holes				△△
Execution A		Execution SST		d		d ₁		
Code	Description	Code	Description	mm	inch (BSP/GAS)	mm	inch (BSP/GAS)	g
419630	BAG2-180-42-42-A	419631	BAG2-180-42-42-SST	42.4	1"1/4	42.4	1"1/4	720
419628	BAG2-180-48-42-A	419629	BAG2-180-48-42-SST	48.3	1"1/2	42.4	1"1/4	710
419626	BAG2-180-48-48-A	419627	BAG2-180-48-48-SST	48.3	1"1/2	48.3	1"1/2	700
419624	BAG2-180-60-42-A	419625	BAG2-180-60-42-SST	60.3	2"	42.4	1"1/4	690
419622	BAG2-180-60-48-A	419623	BAG2-180-60-48-SST	60.3	2"	48.3	1"1/2	680