

# PLRB+C

ELESA Original design

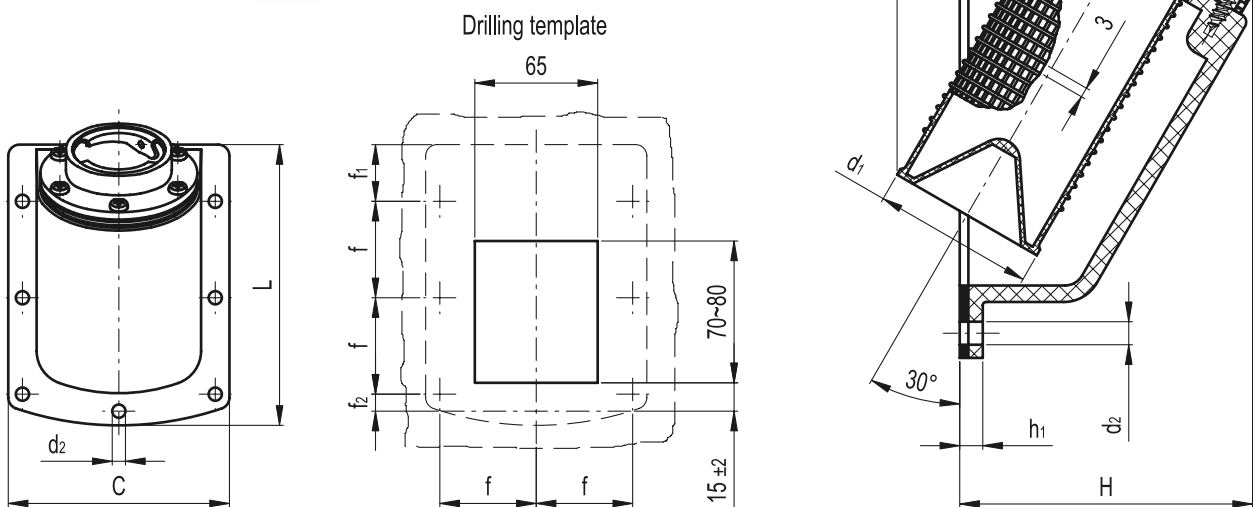
## Side mount bayonet style flange



- **Mount**  
Polyamide based (PA) technopolymer with NBR synthetic rubber gasket. Resistant to solvents, oils, greases and other chemical agents.
  - **Flange**  
Zinc-plated steel with flat gasket in cork impregnated MGS based rubber.
  - **Basket**  
Polypropylene based (PP) technopolymer. Resistant to solvents, oils, greases and other chemical agents.
  - **Colour**  
Black, matte finish.
  - **Assembly**
    - Flange and basket are fitted to the mount by means of six zinc-plated steel self-tapping screws TC-N10 (Ø 4.8x19) UNI 6951-DIN 7971, included in the supply.
    - The mount is fitted to the reservoir by means of seven M6 screws and relative washers (not included).
- Maximum torque recommended: 4 Nm.

**Special executions on request** (For sufficient quantities)  
Side mount bayonet style flange without basket (execution PLRB).

**Note**  
The breather cap to be coupled to the flange is not included.  
Breather caps type SFN. (see page 970), SFP. (see page 972), SFW. (see page 978) can be used depending on customer's requirements.



Elesa Standards		Main dimensions											
Code	Description	d4	L	C	H	d1	d2	h	h1	f	f1	f2	g
49401	PLRB+C	39	148.5	117	90	49	7	18	7	51	30	9	355



**elesa-ganter**

ELESA and GANTER models all rights reserved in accordance with the law. Always mention the source when reproducing our drawings.

15

988

Accessories for hydraulic systems