

Plugs



- **Material**

Glass-fibre reinforced polyamide based (PA) technopolymer. Resistant to solvents, oils, greases and other chemical agents.

- **Colour**

Black, matte finish.

- **Flat packing ring**

NBR synthetic rubber.

- **Maximum continuous working temperature**

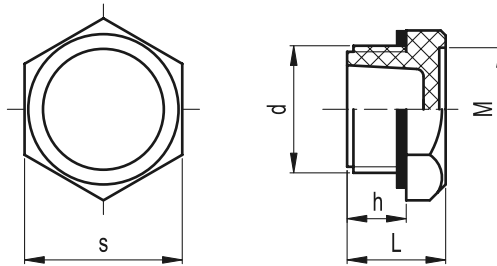
130°C.

Accessories on request

TN. plugs are suitable for mounting MH. aluminium plates with graphic symbols (see page 955).

Technical data

An adequate tightening torque (see table below) is recommended when screwing the plug, so as to guarantee optimal tightness without any deformation of the packing ring. Suggested tightening torque is the result of laboratory tests carried out at ambient temperature (23°C) with plug, packing ring and reservoir walls perfectly cleaned.



Elesa Standards		Main dimensions					Tightening torque	⚖
Code	Description	d	h	s	L	M	[Nm]	g
58284	TN.10x1.5	M10x1.5	9	19	16	15	4÷5	4
58285	TN.12x1.5	M12x1.5	9	19	16	15	6÷8	4
58286	TN.14x1.5	M14x1.5	9	19	16	15	6÷8	5
58287	TN.16x1.5	M16x1.5	9	22	16	17	8÷10	7
58288	TN.18x1.5	M18x1.5	11	26	18	20.5	8÷10	8
58289	TN.20x1.5	M20x1.5	11	26	18	20.5	8÷10	8
58290	TN.22x1.5	M22x1.5	12	32	20	25	10÷12	12
58291	TN.25x1.5	M25x1.5	12	32	20	25	10÷12	12
58292	TN.26x1.5	M26x1.5	12	32	20	25	10÷12	14
58293	TN.35x1.5	M35x1.5	13	38	22	31	15÷18	15
58401	TN.40x1.5	M40x1.5	14	46	24	38	15÷18	20

Elesa Standards		Main dimensions					Tightening torque	⚖
Code	Description	d	h	s	L	M	[Nm]	g
58294	TN.1/8	G 1/8	9	19	16	15	4÷6	4
58295	TN.1/4	G 1/4	9	19	16	15	4÷6	4
58296	TN.3/8	G 3/8	9	22	16	17	8÷10	5
58297	TN.1/2	G 1/2	11	26	18	20.5	8÷10	8
58298	TN.3/4	G 3/4	12	32	20	25	10÷12	14
58299	TN.1	G 1	13	38	22	31	12÷15	18
58411	TN.1¼	G1¼	14	46	24	38	15÷18	20
58413	TN.1½	G1½	15	55	26	46	15÷18	24