

TMA.

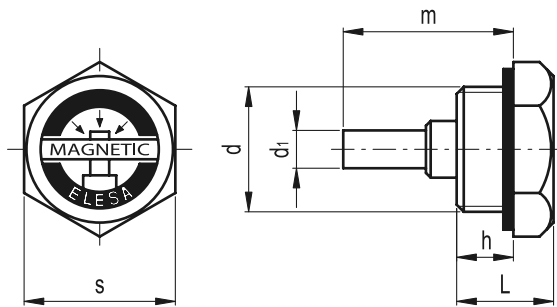
Magnetic plugs



- **Material**
Aluminium.
- **Plate**
Matte anodised aluminium marked "MAGNETIC" and graphic symbol.
- **Flat packing ring**
NBR synthetic rubber.
- **Permanent magnetic element**
Special alloy with a high attractive power, to keep metal particles in oil.
- **Maximum continuous working temperature**
130°C.

Technical data

An adequate tightening torque (see table below) is recommended when screwing the plug, so as to guarantee optimal tightness without any deformation of the packing ring. Suggested tightening torque is the result of laboratory tests carried out at ambient temperature (23°C) with plug, packing ring and reservoir walls perfectly cleaned.



Elesa Standards		Main dimensions						Tightening torque	Δ
Code	Description	d	h	s	L	di	m	[Nm]	g
59791	TMA.1/4	G 1/4	9	19	15.5	6	30	8÷10	15
59801	TMA.3/8	G 3/8	9	22	15.5	8	30.5	8÷10	22
59811	TMA.1/2	G 1/2	11	26	18	8	34	10÷15	30
59821	TMA.3/4	G 3/4	12	32	20	8	36	10÷15	44

TCE.

ELESA Original design

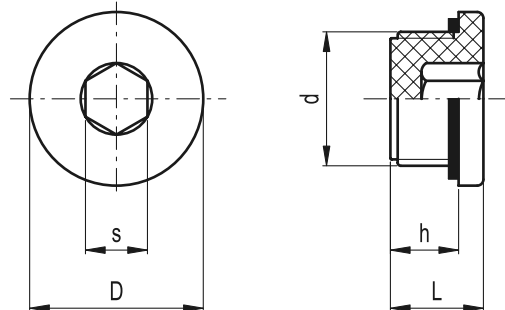
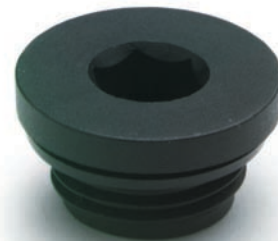
Plugs with hexagon socket



- **Material**
Glass-fibre reinforced polyamide based (PA) technopolymer. Resistant to solvents, oils, greases and other chemical agents.
- **Colour**
Black, matte finish.
- **Flat packing ring**
NBR synthetic rubber.
- **Maximum continuous working temperature**
130°C.

Technical data

An adequate tightening torque (see table below) is recommended when screwing the plug, so as to guarantee optimal tightness without any deformation of the packing ring. Suggested tightening torque is the result of laboratory tests carried out at ambient temperature (23°C) with plug, packing ring and reservoir walls perfectly cleaned.



Elesa Standards		Main dimensions					Tightening torque	Δ
Code	Description	d	h	s	L	D	[Nm]	g
161033	TCE.1/4	G 1/4	9	6	12	20	3	4
161034	TCE.3/8	G 3/8	9	8	13	22	3÷5	5
161035	TCE.1/2	G 1/2	11	10	15	28	3÷4	8
161036	TCE.3/4	G 3/4	12	12	16.5	32	3÷5	14