

CM. CML.

Latches with knob

- **Material**

Rotor, stator and knob in nickel-plated zinc alloy.

CML with knob provided with a transversal hole to insert a padlock with diameter from 5 to 7 mm.

- **Nut**

Brass (M19x1).

- **Spring washer**

Zinc-plated steel.

- **Washer (only for CML.)**

PVC.

- **Closing lever**

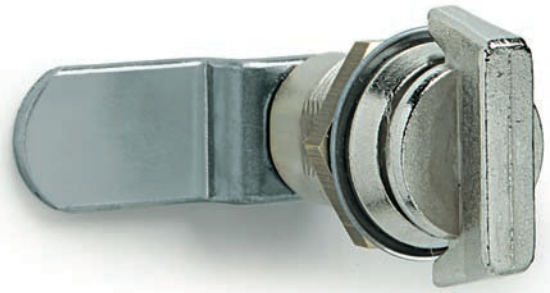
Zinc-plated steel, 2.5 mm thickness.

- **Screw**

Zinc-plated steel (M5x8).

- **Rotation**

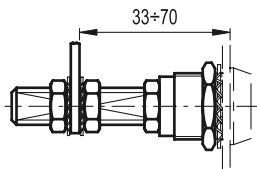
90°.



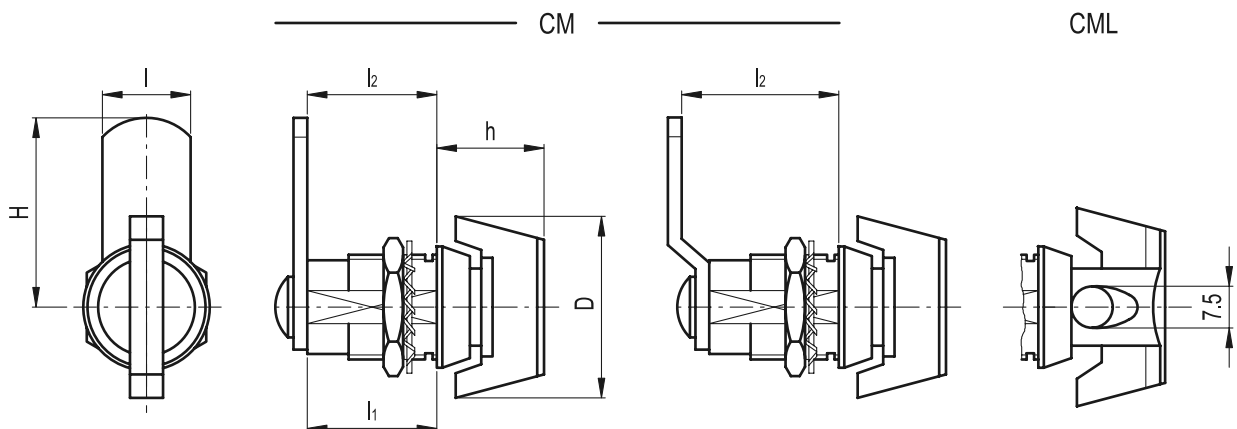
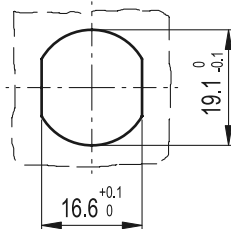
Special executions and accessories (For sufficient quantities)

- Closing levers in other dimensions.

- Brass threaded extension for prolonged positioning of the lever (code 421137 description C.PQ M5/58).



Drilling template



Standard Elements		Main dimensions						△△
Code	Description	H	l ₂	D	h	l	l ₁	g
421211	CM.32-20	32	20	30	15	16	20	63
421213	CM.36-25	35.5	25	30	15	16	20	65
421221	CML.32-25	32	25	36	23	16	25	74
421223	CML.36-30	35.5	30	36	23	16	25	76



elessa-GANTER

ELESA and GANTER models all rights reserved in accordance with the law. Always mention the source when reproducing our drawings.