

Hinge for thin doors

- **Material**
Anodised aluminium.
- **Colour**
Natural, matte finish.
- **Rotation pin**
AISI 303 stainless steel.
- **Guide bushings for pin**
Polyamide based (PA) technopolymer.
- **Assembly**
Self-tapping screws 4.2x15.9 DIN 7982, stainless steel (narrow body of the hinge) and M5x10 semi-rounded head screws, stainless steel (large body of the hinge), supplied.

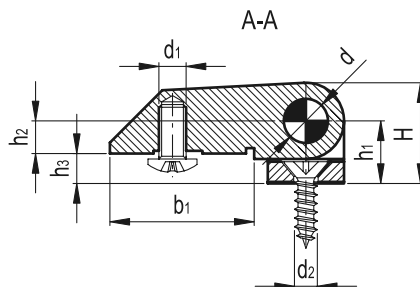
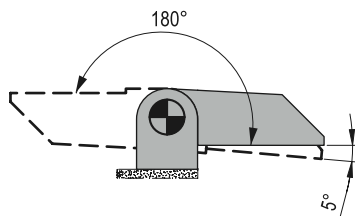
Features and applications

The hinge is made up of two bodies with different dimensions (a narrow one and a larger one). They can be assembled for example on structures with thin jambs and doors.

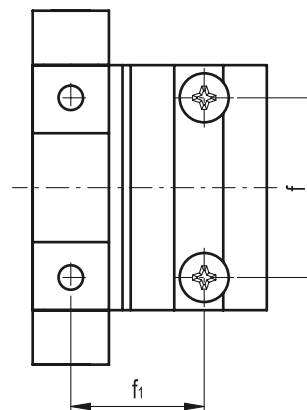
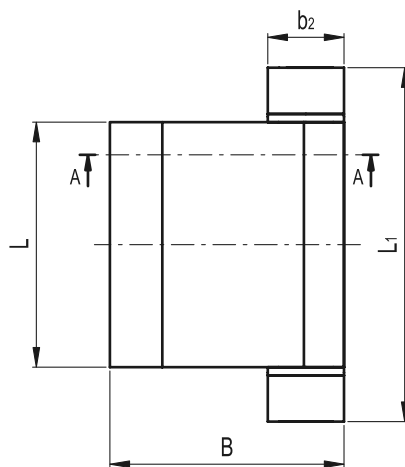
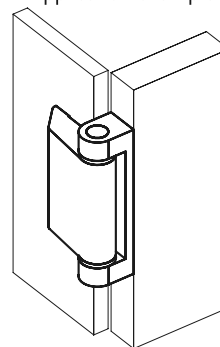
Rotation angle

Max 180°, between 0° and 180° (0°=condition where the two interconnected surfaces are on the same plane).

Do not exceed the rotation angle limit (see drawing) so as not to prejudice the hinge mechanical performance.



Application example



Standard Elements		Main dimensions											Fitting		⚖️	
Code	Description	B	L	L ₁	f	f ₁	H	h ₁	h ₂	h ₃	b ₁	b ₂	d	d ₁	d ₂	g
428251	CMD.AL-45-SH-4-M5	43	45	65	33	24.5	18.5	11.5	6	5.5	26.5	14	8	M5	4.2	90