

In line lift-off hinge



Material

Glass-fibre reinforced polyamide based (PA) technopolymer. Resistant to solvents, oils, greases and other chemical agents.

Colour

Black, matte finish.

Rotation pin

Acetal resin based (POM) technopolymer, black colour.

Assembly

- Execution **B**: nickel-plated brass bushings, tapped hole.
- Execution **p**: nickel-plated steel threaded studs.
- Combined executions: **B/p - p/B**



12

830

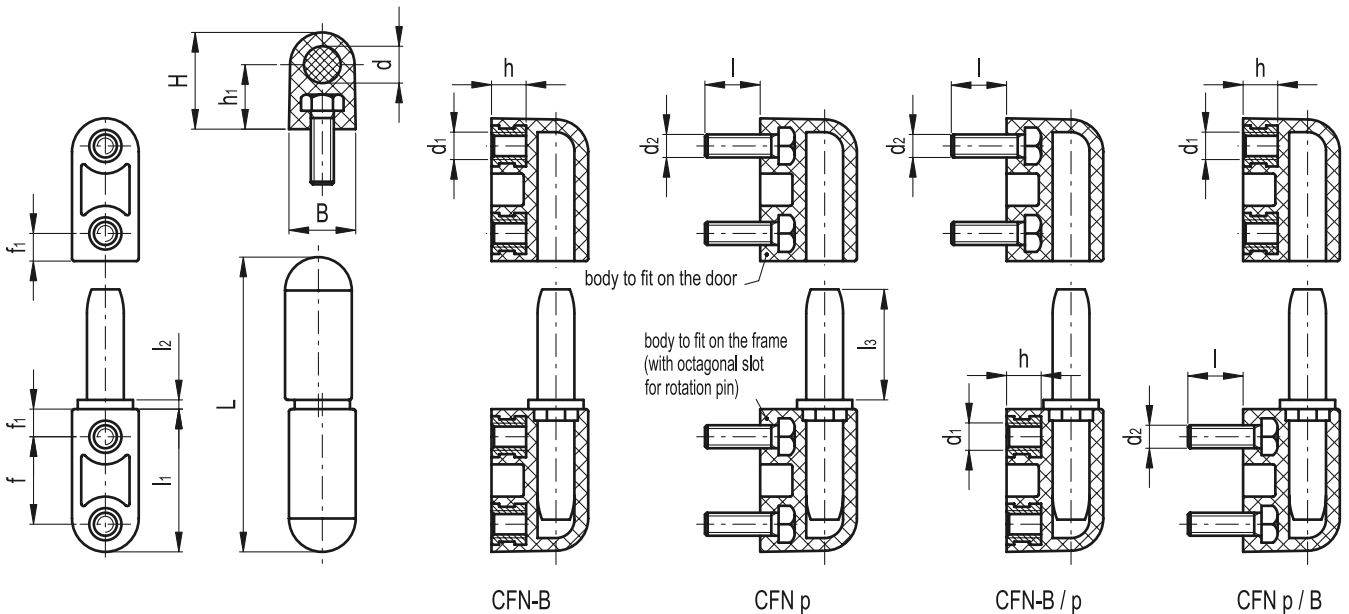
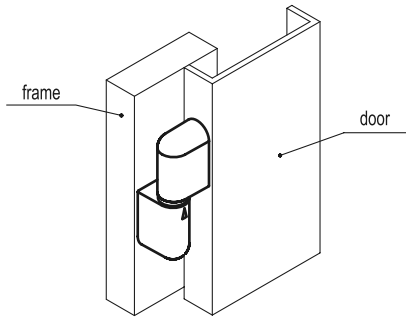
Hinges

Features

CFN. in line lift-off hinges have been designed with a particular system patented by ELESA which allows the adjustment of the inclination of the door on the frame.

To choose the convenient type and the right number of hinges for your application, see the Guidelines (see page 792).

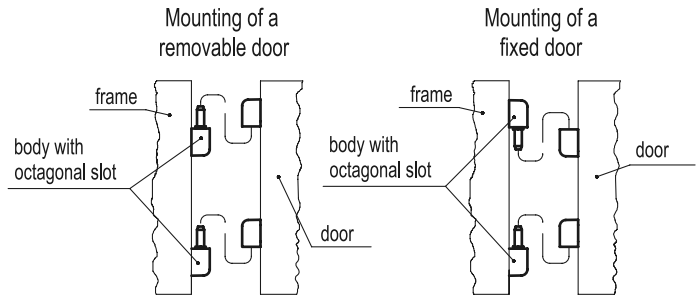
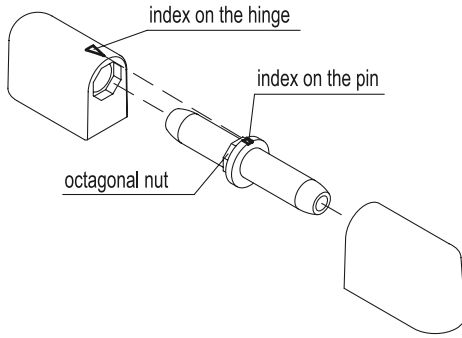
Application example



Standard Elements		Main dimensions										Fitting				⚖
												Bushings		Studs		
Code	Description	L	B	H	f	f ₁	h ₁	l ₂	l ₃	h ₁	d	d ₁	h	d ₂	l	g
426111	CFN.65 B-M5	64	14.5	21	19	6	31	2	24	14	8	M5	8	-	-	24
426121	CFN.65 p-M5x12	64	14.5	21	19	6	31	2	24	14	8	-	-	M5	12	30
426131	CFN.65 B-M5-p-M5x12	64	14.5	21	19	6	31	2	24	14	8	M5	8	M5	12	27
426141	CFN.65 p-M5x12-B-M5	64	14.5	21	19	6	31	2	24	14	8	M5	8	M5	12	27

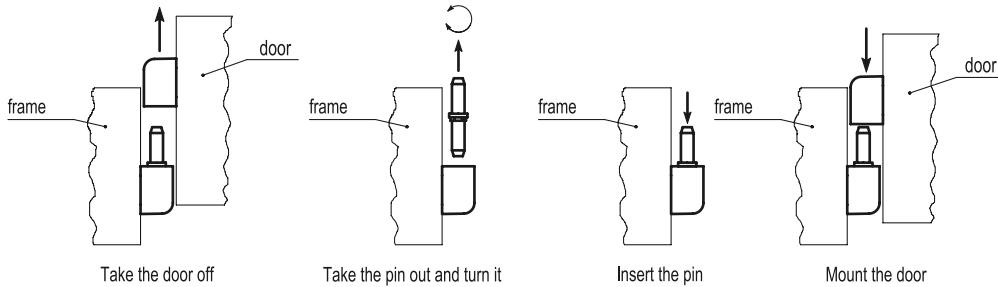
Assembly instructions

1. Fit the hinge bodies with octagonal slot for rotation pin on the frame and the other two bodies with cylindrical slot on the door.
2. Insert the pins with octagonal nut in the bodies fitted on the frame by matching the indexes engraved on the pin and on the hinge.
3. Mount the door by matching the hinge bodies on the pins.



Instructions for the adjustment of the door

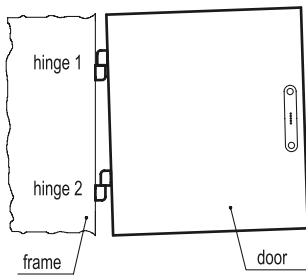
In case the door is off line with the frame, the inclination of the door can be adjusted by turning the pins clockwise or anticlockwise.



Adjustment examples

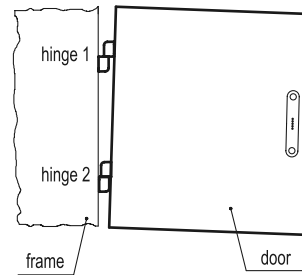
If the door is off line on the bottom side

In order to have the door in line with the frame, turn the pin of hinge 1 anticlockwise and the pin of hinge 2 by 45° or 90° clockwise.



If the door is off line on the top side

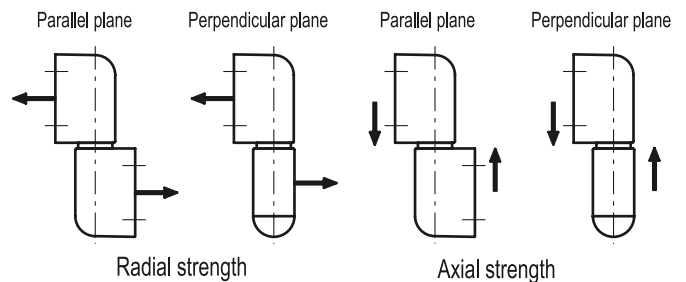
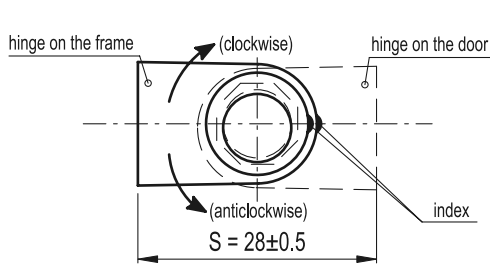
In order to have the door in line with the frame, turn the pin of hinge 1 clockwise and the pin of hinge 2 45° or 90° anticlockwise.



Off line adjustments

Each pin has eight different positions which allow the adjustment of off line door. To have the door in line with the frame, it can be necessary to adjust the pins of both hinges.

By turning the pin anticlockwise, the distance S increases (+0.5) while by turning the pin clockwise, it decreases (-0.5).



Standard Elements		Maximum tightening torque [Nm]	RADIAL STRENGTH		AXIAL STRENGTH	
			Maximum working load E_r [N]		Maximum working load E_a [N]	
Code	Description		Parallel and perpendicular planes		Parallel and perpendicular planes	
426111	CFN.65 B-M5	5	200		590	
426121	CFN.65 p-M5x12	5	200		590	
426131	CFN.65 B-M5-p-M5x12	5	200		590	
426141	CFN.65 p-M5x12-B-M5	5	200		590	

The load at breakage data have not been calculated because CFN. hinges under working conditions exceeding the maximum working load values indicated in the tables, produce a plastic deformation which makes them no more usable.