

Hinges



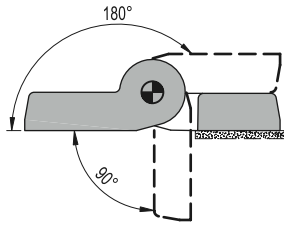
- Material**
 High resilience polyamide based (PA) technopolymer. Resistant to solvents, oils, greases and other chemical agents.
- Colour**
 Black, matte finish.
- Rotation pin**
 AISI 303 stainless steel.
- Assembly**
 Through holes for cylindrical head screws.



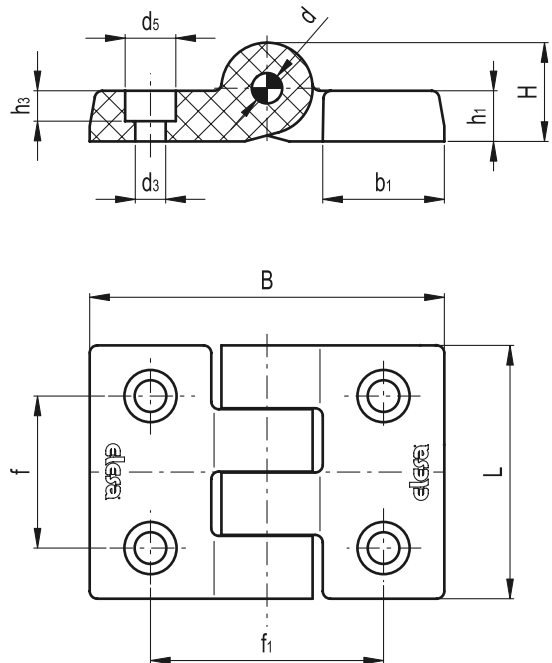
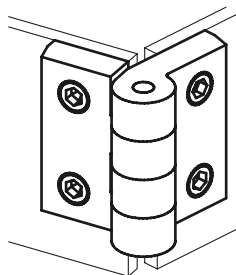
Rotation angle

Max 270°, between 0° and -90° and between 0° and 180° (0° = condition where the two interconnected surfaces are on the same plane).
 Do not exceed the rotation angle limit (see drawing) so as not to prejudice the hinge mechanical performance.

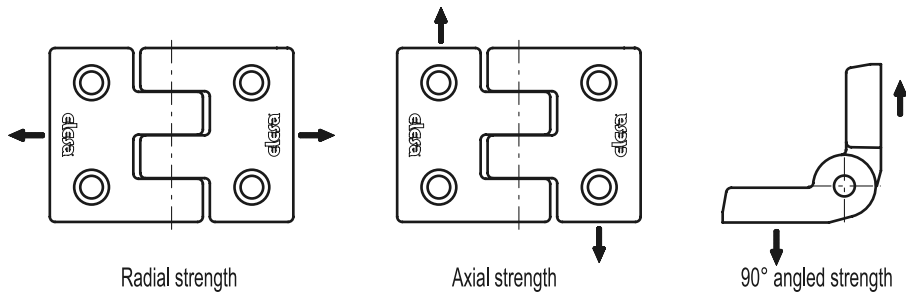
To choose the convenient type and the right number of hinges for your application, see the Guidelines (see page 792).



Application example



Standard Elements		Main dimensions							Fitting			\triangle	
Code	Description	B	L	$f_{\pm 0.25}$	$f1_{\pm 0.25}$	H	h1	b1	d	d3	d5	h3	g
424021	CFH.50 CH-6	69.5	50	30	45.5	19.5	10	24	6	6.5	10	6.5	46
424031	CFH.50 CH-8	69.5	50	30	45.5	19.5	10	24	6	8.5	13	4.5	42



Standard Elements		RADIAL STRENGTH		AXIAL STRENGTH		90° ANGLED STRENGTH		Maximum tightening torque [Nm]
Code	Description	Maximum working load E_r [N]	Load at breakage R_r [N]	Maximum working load E_a [N]	Load at breakage R_a [N]	Maximum working load E_{90} [N]	Load at breakage R_{90} [N]	
424021	CFH.50 CH-6	380	3830	200	2440	190	1950	3
424031	CFH.50 CH-8	380	3830	200	2440	190	1950	3

