

# CFF.

FM Design

## Hinges



- **Material**

High resilience polyamide based (PA) technopolymer. Resistant to solvents, oils, greases and other chemical agents.

- **Colour**

Black, matte finish.

- **Rotation pin**

AISI 303 stainless steel.

- **Assembly**

- Execution **B**: nickel-plated brass bushings, tapped hole.

- Execution **p**: nickel-plated steel threaded studs.

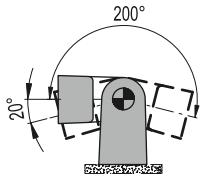
- Combined executions: **B/p**

- **Rotation angle**

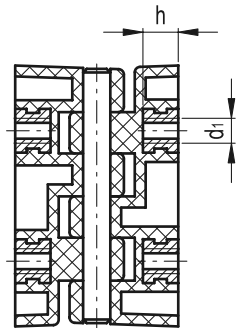
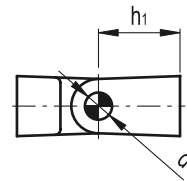
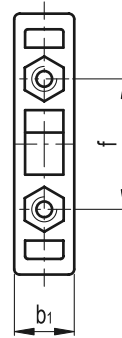
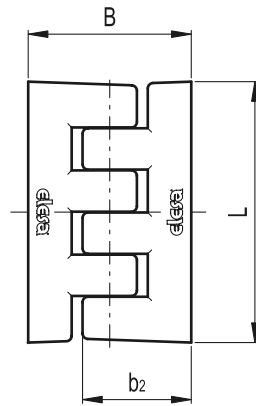
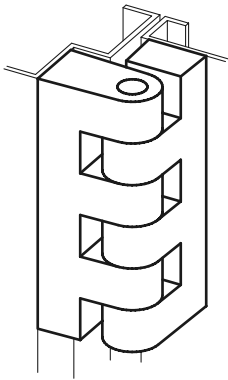
Max 220°, between 0° and -20° and between 0° and 200°

(0° = condition where the two interconnected surfaces are at a right angle).

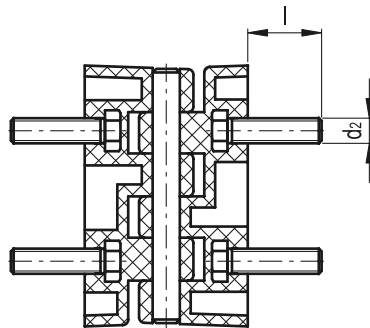
Do not exceed the rotation angle limit (see drawing) so as not to prejudice the hinge mechanical performance.



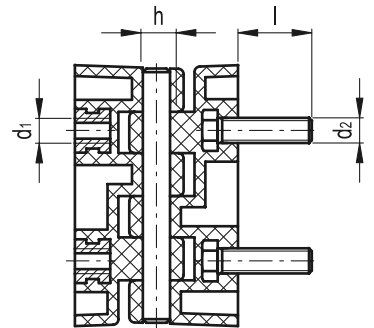
Application example



CFF-B



CFF p



CFF-B / p

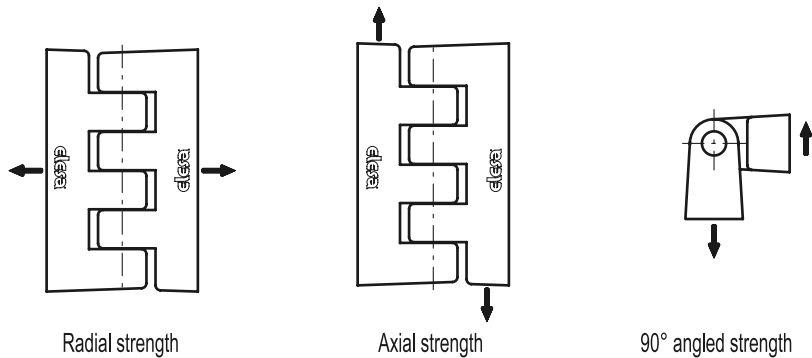
12

818

Hinges

To choose the convenient type and the right number of hinges for your application, see the Guidelines (see page 792).

Standard Elements		Main dimensions							Fitting				⚖
									Bushings		Studs		
Code	Description	B	L	f ±0.25	h1	b1	b2	d	d1	h	d2	l	g
423511	CFE.30 B-M3	19	30.5	15	9.5	7	12.5	2.5	M3	4	-	-	6
423521	CFE.30 p-M3x13	19	30.5	15	9.5	7	12.5	2.5	-	-	M3	13	8
423531	CFE.30 B-M3-p-M3x13	19	30.5	15	9.5	7	12.5	2.5	M3	4	M3	13	7
423611	CFE.40 B-M4	24	40.5	20	12	9.5	16.5	4	M4	5.5	-	-	14
423621	CFE.40 p-M4x18	24	40.5	20	12	9.5	16.5	4	-	-	M4	18	20
423631	CFE.40 B-M4-p-M4x18	24	40.5	20	12	9.5	16.5	4	M4	5.5	M4	18	17
423711	CFE.48 B-M5	30	48.5	24	15	11.5	20	5	M5	6.5	-	-	23
423721	CFE.48 p-M5x17	30	48.5	24	15	11.5	20	5	-	-	M5	17	33
423731	CFE.48 B-M5-p-M5x17	30	48.5	24	15	11.5	20	5	M5	6.5	M5	17	28
423811	CFE.66 B-M6	42	66	33	21	15	27.5	6	M6	9	-	-	54
423821	CFE.66 p-M6x16	42	66	33	21	15	27.5	6	-	-	M6	16	64
423831	CFE.66 B-M6-p-M6x16	42	66	33	21	15	27.5	6	M6	9	M6	16	59



Standard Elements		RADIAL STRENGTH		AXIAL STRENGTH		90° ANGLED STRENGTH		Maximum tightening torque [Nm]	
Code	Description	Maximum working load Er [N]	Load at breakage Rr [N]	Maximum working load Ea [N]	Load at breakage Ra [N]	Maximum working load E90 [N]	Load at breakage R90 [N]	B	p
423511	CFE.30 B-M3	150	1190	100	1030	90	600	1	-
423521	CFE.30 p-M3x13	160	1020	120	900	80	560	-	0.5
423531	CFE.30 B-M3-p-M3x13	150	1020	100	900	80	560	1	0.5
423611	CFE.40 B-M4	290	1950	180	1780	150	1160	4	-
423621	CFE.40 p-M4x18	140	1220	170	1490	120	710	-	1.5
423631	CFE.40 B-M4-p-M4x18	140	1220	170	1490	120	710	4	1.5
423711	CFE.48 B-M5	480	2890	370	3250	150	1870	>5	-
423721	CFE.48 p-M5x17	370	2480	220	2200	140	1200	-	4
423731	CFE.48 B-M5-p-M5x17	370	2480	220	2200	140	1200	>5	4
423811	CFE.66 B-M6	860	4880	310	4660	340	2770	>5	-
423821	CFE.66 p-M6x16	590	3520	310	2410	220	1420	-	4
423831	CFE.66 B-M6-p-M6x16	590	3520	310	2410	220	1420	>5	4