

DIN 71802

Angled ball joints

- **Material**

Zinc-plated steel.

- **Ball shank**

Type DIN 71803, threaded.

- Execution **C**: with threaded ball shank, without safety catch.
- Execution **CS**: with threaded ball shank, with safety catch.
- Execution **B**: with rivet ball shank, without safety catch.
- Execution **BS**: with rivet ball shank, with safety catch.

- **Ball**

Hardened steel, lubricated.

- **Assembly**

Standard threaded hole d1.

DIN 71802 angled ball joints consists of a ball socket DIN 71805 and a ball shank DIN 71803.

- **Other standard execution available**

- Execution **L**: left-hand threaded hole (M5÷M12).
- Execution **F**: fine threaded hole (M14).
- Execution **FL**: left-hand fine threaded hole (M14).

Rotating angle

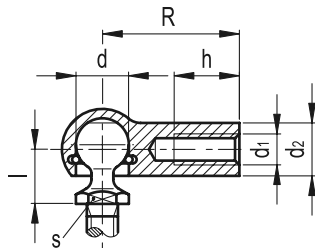
- For execution CS: 15°.
- For execution C: 18°.

Accessories on request

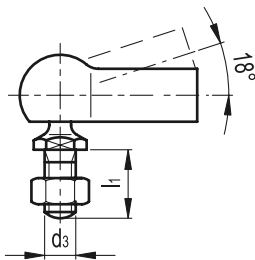
Ball joints with reduced resistance, ball socket with play and GN 710 (see page 711) dust cap to protect the ball point.

Assembly instructions

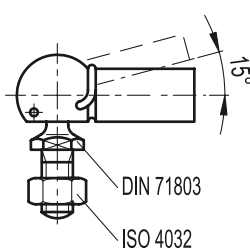
The ball is assembled by pushing it through the circlip which act as a retainer. In case the retaining force between the ball and the socket is not sufficient, it can be increased by adding a safety catch which can be easily fitted.



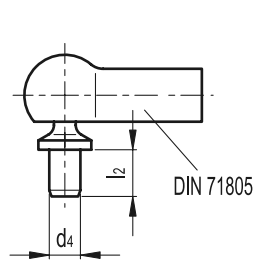
DIN 71802-C



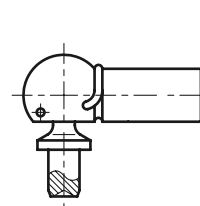
DIN 71802-CS



DIN 71802-B



DIN 71802-BS




Standard Elements	Main dimensions											Min. separating force [N]	△ g
	d H9/h9	d1	d2	d3	d4 h11	l	l1	l2	R	h min	s		
DIN 71802-8-M5-C	8	M5	8	M5	-	9	10	-	22	10.5	7	30	14
DIN 71802-8-M5L-C	8	M5L	8	M5	-	9	10	-	22	10.5	7	30	15
DIN 71802-10-M6-C	10	M6	10	M6	-	11	12.5	-	25	11.5	8	40	25
DIN 71802-10-M6L-C	10	M6L	10	M6	-	11	12.5	-	25	11.5	8	40	25
DIN 71802-13-M8-C	13	M8	13	M8	-	13	16.5	-	30	14	11	60	52
DIN 71802-13-M8L-C	13	M8L	13	M8	-	13	16.5	-	30	14	11	60	50
DIN 71802-16-M10-C	16	M10	16	M10	-	16	20	-	35	15.5	13	80	95
DIN 71802-16-M10L-C	16	M10L	16	M10	-	16	20	-	35	15.5	13	80	95
DIN 71802-16-M12-C	16	M12	16	M12	-	16	20	-	35	15.5	13	80	100
DIN 71802-16-M12L-C	16	M12L	16	M12	-	16	20	-	35	15.5	13	80	100
DIN 71802-19-M14F-C	19	M14F=M14x1.5	22	M14x1.5	-	20	28	-	45	21.5	16	100	217
DIN 71802-19-M14FL-C	19	M14FL=M14x1.5L	22	M14x1.5	-	20	28	-	45	21.5	16	100	220



ELESA-GANTER

ELESA and GANTER models all rights reserved in accordance with the law. Always mention the source when reproducing our drawings.

Standard Elements	Main dimensions											Min. separating force [N]	
Description	d H9/h9	d1	d2	d3	d4 h11	l	l1	l2	R	h min	s		g
DIN 71802-8-M5-CS	8	M5	8	M5	-	9	10	-	22	10.5	7	30	14
DIN 71802-8-M5L-CS	8	M5L	8	M5	-	9	10	-	22	10.5	7	30	15
DIN 71802-10-M6-CS	10	M6	10	M6	-	11	12.5	-	25	11.5	8	40	25
DIN 71802-10-M6L-CS	10	M6L	10	M6	-	11	12.5	-	25	11.5	8	40	26
DIN 71802-13-M8-CS	13	M8	13	M8	-	13	16.5	-	30	14	11	60	50
DIN 71802-13-M8L-CS	13	M8L	13	M8	-	13	16.5	-	30	14	11	60	50
DIN 71802-16-M10-CS	16	M10	16	M10	-	16	20	-	35	15.5	13	80	95
DIN 71802-16-M10L-CS	16	M10L	16	M10	-	16	20	-	35	15.5	13	80	100
DIN 71802-16-M12-CS	16	M12	16	M12	-	16	20	-	35	15.5	13	80	101
DIN 71802-16-M12L-CS	16	M12L	16	M12	-	16	20	-	35	15.5	13	80	102
DIN 71802-19-M14F-CS	19	M14F=M14x1.5	22	M14x1.5	-	20	28	-	45	21.5	16	100	220
DIN 71802-19-M14FL-CS	19	M14FL=M14x1.5L	22	M14x1.5	-	20	28	-	45	21.5	16	100	220
DIN 71802-8-M5-4-B	8	M5	8	-	5	9	-	4	22	10.5	7	30	13
DIN 71802-8-M5L-4-B	8	M5L	8	-	5	9	-	4	22	10.5	7	30	13
DIN 71802-8-M5-7.5-B	8	M5	8	-	5	9	-	7.5	22	10.5	7	30	13
DIN 71802-8-M5L-7.5-B	8	M5L	8	-	5	9	-	7.5	22	10.5	7	30	13
DIN 71802-10-M6-4.5-B	10	M6	10	-	6	11	-	4.5	25	11.5	8	40	22
DIN 71802-10-M6L-4.5-B	10	M6L	10	-	6	11	-	4.5	25	11.5	8	40	22
DIN 71802-10-M6-8-B	10	M6	10	-	6	11	-	8	25	11.5	8	40	23
DIN 71802-10-M6L-8-B	10	M6L	10	-	6	11	-	8	25	11.5	8	40	23
DIN 71802-13-M8-5-B	13	M8	13	-	8	13	-	5	30	14	11	60	40
DIN 71802-13-M8L-5-B	13	M8L	13	-	8	13	-	5	30	14	11	60	40
DIN 71802-13-M8-10-B	13	M8	13	-	8	13	-	10	30	14	11	60	44
DIN 71802-13-M8L-10-B	13	M8L	13	-	8	13	-	10	30	14	11	60	44
DIN 71802-16-M10-6-B	16	M10	16	-	10	16	-	6	35	15.5	13	80	80
DIN 71802-16-M10L-6-B	16	M10L	16	-	10	16	-	6	35	15.5	13	80	80
DIN 71802-16-M10-13-B	16	M10	16	-	10	16	-	13	35	15.5	13	80	85
DIN 71802-16-M10L-13-B	16	M10L	16	-	10	16	-	13	35	15.5	13	80	85
DIN 71802-16-M12-6-B	16	M12	16	-	12	16	-	6	35	15.5	13	80	80
DIN 71802-16-M12L-6-B	16	M12L	16	-	12	16	-	6	35	15.5	13	80	80
DIN 71802-16-M12-13-B	16	M12	16	-	12	16	-	13	35	15.5	13	80	85
DIN 71802-16-M12L-13-B	16	M12L	16	-	12	16	-	13	35	15.5	13	80	85
DIN 71802-19-M14F-12-B	19	M14F=M14x1.5	22	-	14	20	-	12	45	21.5	16	100	181
DIN 71802-19-M14FL-12-B	19	M14FL=M14x1.5L	22	-	14	20	-	12	45	21.5	16	100	181
DIN 71802-19-M14F-18-B	19	M14F=M14x1.5	22	-	14	20	-	18	45	21.5	16	100	190
DIN 71802-19-M14FL-18-B	19	M14FL=M14x1.5L	22	-	14	20	-	18	45	21.5	16	100	190
DIN 71802-8-M5-4-BS	8	M5	8	-	5	9	-	4	22	10.5	7	30	13
DIN 71802-8-M5L-4-BS	8	M5L	8	-	5	9	-	4	22	10.5	7	30	13
DIN 71802-8-M5-7.5-BS	8	M5	8	-	5	9	-	7.5	22	10.5	7	30	13
DIN 71802-8-M5L-7.5-BS	8	M5L	8	-	5	9	-	7.5	22	10.5	7	30	13
DIN 71802-10-M6-4.5-BS	10	M6	10	-	6	11	-	4.5	25	11.5	8	40	22
DIN 71802-10-M6L-4.5-BS	10	M6L	10	-	6	11	-	4.5	25	11.5	8	40	22
DIN 71802-10-M6-8-BS	10	M6	10	-	6	11	-	8	25	11.5	8	40	23
DIN 71802-10-M6L-8-BS	10	M6L	10	-	6	11	-	8	25	11.5	8	40	23
DIN 71802-13-M8-5-BS	13	M8	13	-	8	13	-	5	30	14	11	60	40
DIN 71802-13-M8L-5-BS	13	M8L	13	-	8	13	-	5	30	14	11	60	40
DIN 71802-13-M8-10-BS	13	M8	13	-	8	13	-	10	30	14	11	60	44
DIN 71802-13-M8L-10-BS	13	M8L	13	-	8	13	-	10	30	14	11	60	44
DIN 71802-16-M10-6-BS	16	M10	16	-	10	16	-	6	35	15.5	13	80	80
DIN 71802-16-M10L-6-BS	16	M10L	16	-	10	16	-	6	35	15.5	13	80	80
DIN 71802-16-M10-13-BS	16	M10	16	-	10	16	-	13	35	15.5	13	80	85
DIN 71802-16-M10L-13-BS	16	M10L	16	-	10	16	-	13	35	15.5	13	80	85
DIN 71802-16-M12-6-BS	16	M12	16	-	12	16	-	6	35	15.5	13	80	80
DIN 71802-16-M12L-6-BS	16	M12L	16	-	12	16	-	6	35	15.5	13	80	80
DIN 71802-16-M12-13-BS	16	M12	16	-	12	16	-	13	35	15.5	13	80	85
DIN 71802-16-M12L-13-BS	16	M12L	16	-	12	16	-	13	35	15.5	13	80	85
DIN 71802-19-M14F-12-BS	19	M14F=M14x1.5	22	-	14	20	-	12	45	21.5	16	100	181
DIN 71802-19-M14FL-12-BS	19	M14FL=M14x1.5L	22	-	14	20	-	12	45	21.5	16	100	181
DIN 71802-19-M14F-18-BS	19	M14F=M14x1.5	22	-	14	20	-	18	45	21.5	16	100	190
DIN 71802-19-M14FL-18-BS	19	M14FL=M14x1.5L	22	-	14	20	-	18	45	21.5	16	100	190