

GN 230

Shallow T-nuts



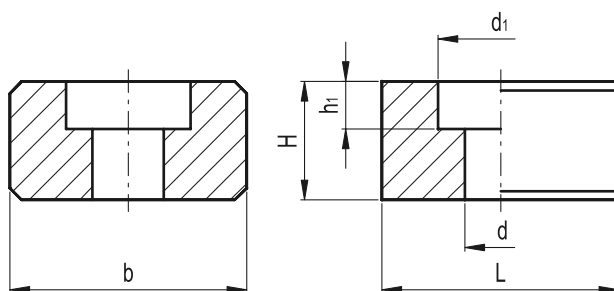
- **Material**

Ground and hardened black-oxide steel body.

- **Features and applications**

GN 230 shallow T-nuts are used for aligning and positioning jigs and fixtures and machining tables with DIN 650 T-slots.

For this purpose they are inserted into the aligning slots of the jig or fixture.



Standard Elements	Main dimensions						For screw DIN 84/DIN 912	⚖
Description	b h6	L	H	d	d1	h1	g	
GN 230-10	10	20	8	4.5	8	4.3	M4x10	10
GN 230-12	12	20	8	5.5	10	5.3	M5x12	11
GN 230-14	14	22	10	6.6	11	6.3	M6x16	19
GN 230-16	16	22	10	6.6	11	6.3	M6x16	22
GN 230-18	18	22	10	6.6	11	6.3	M6x16	25
GN 230-20	20	22	10	6.6	11	6.3	M6x16	28
GN 230-22	22	32	12	6.6	11	6.3	M6x16	59