

# GN 187.1

# GN 187.2

## Cases

- **Material**  
Black-oxide steel.

### Applications

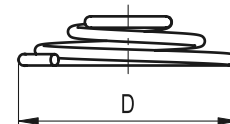
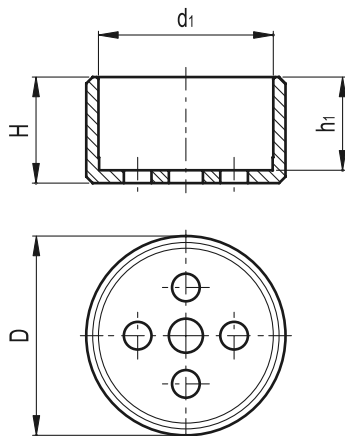
Guide pots GN 187.1 have been realised to optimize the apply of serrated locking plates GN 187 (see page 628).

## Thrust springs

- **Material**  
AISI 301 stainless steel.

### Applications

Thrust springs GN 187.2 have been realised to optimize the apply of serrated locking plates GN 187 (see page 628).



Standard Elements	Main dimensions				⚖	Serrated locking plates
Description	$d1^{+0.2}_{+0.3}$	D -0.5	H	h1	g	Description
GN 187.1-22	22	26	14.5	12.5	20	GN 187-22
GN 187.1-27	27	31	16.5	14.5	28	GN 187-27
GN 187.1-32	32	36	19.5	17.5	38	GN 187-32
GN 187.1-40	40	44	24.5	22.5	59	GN 187-40

Standard Elements	Main dimension	Spring pressure	⚖	Serrated locking plates
Description	D	Max. load [N~]	g	Description
GN 187.2-15	15	40	1	GN 187-22
GN 187.2-18	18	45	1	GN 187-27
GN 187.2-23	23	65	2	GN 187-32
GN 187.2-29	29	90	4	GN 187-40